

Product datasheet

Anti-MCT2 antibody - C-terminal ab198272

[1 References](#) [2 Images](#)

Overview

Product name	Anti-MCT2 antibody - C-terminal
Description	Rabbit polyclonal to MCT2 - C-terminal
Host species	Rabbit
Tested applications	Suitable for: WB, IHC-P
Species reactivity	Reacts with: Human
Immunogen	Synthetic peptide corresponding to Human MCT2 (C terminal). Database link: O60669
Positive control	A549 cell lysate; Human ovarian cancer tissue.
General notes	<p>Reproducibility is key to advancing scientific discovery and accelerating scientists' next breakthrough.</p> <p>Abcam is leading the way with our range of recombinant antibodies, knockout-validated antibodies and knockout cell lines, all of which support improved reproducibility.</p> <p>We are also planning to innovate the way in which we present recommended applications and species on our product datasheets, so that only applications & species that have been tested in our own labs, our suppliers or by selected trusted collaborators are covered by our Abpromise™ guarantee.</p> <p>In preparation for this, we have started to update the applications & species that this product is Abpromise guaranteed for.</p> <p>We are also updating the applications & species that this product has been “predicted to work with,” however this information is not covered by our Abpromise guarantee.</p> <p>Applications & species from publications and Abreviews that have not been tested in our own labs or in those of our suppliers are not covered by the Abpromise guarantee.</p> <p>Please check that this product meets your needs before purchasing. If you have any questions, special requirements or concerns, please send us an inquiry and/or contact our Support team ahead of purchase. Recommended alternatives for this product can be found below, as well as customer reviews and Q&As.</p>

Properties

Form	Liquid
Storage instructions	Shipped at 4°C. Store at +4°C short term (1-2 weeks). Upon delivery aliquot. Store at -20°C long

term. Avoid freeze / thaw cycle.

Storage buffer

pH: 7.4
Preservative: 0.05% Sodium azide
Constituents: 50% Glycerol (glycerin, glycerine), 49% PBS

Purity

Immunogen affinity purified

Clonality

Polyclonal

Isotype

IgG

Applications

Our [Abpromise guarantee](#) covers the use of **ab198272** in the following tested applications.

The application notes include recommended starting dilutions; optimal dilutions/concentrations should be determined by the end user.

Application	Abreviews	Notes
WB		1/1000 - 1/5000. Predicted molecular weight: 52 kDa.
IHC-P		1/50 - 1/200.

Target

Function

Proton-linked monocarboxylate transporter. Catalyzes the rapid transport across the plasma membrane of many monocarboxylates such as lactate, pyruvate, branched-chain oxo acids derived from leucine, valine and isoleucine, and the ketone bodies acetoacetate, beta-hydroxybutyrate and acetate. MCT2 is a high affinity pyruvate transporter.

Tissue specificity

High expression in testis, moderate to low in spleen, heart, kidney, pancreas, skeletal muscle, brain and Leukocyte. Restricted expression in normal tissues, but widely expressed in cancer cells.

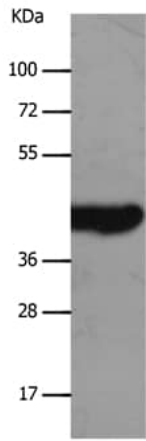
Sequence similarities

Belongs to the major facilitator superfamily. Monocarboxylate porter (TC 2.A.1.13) family.

Cellular localization

Cell membrane.

Images

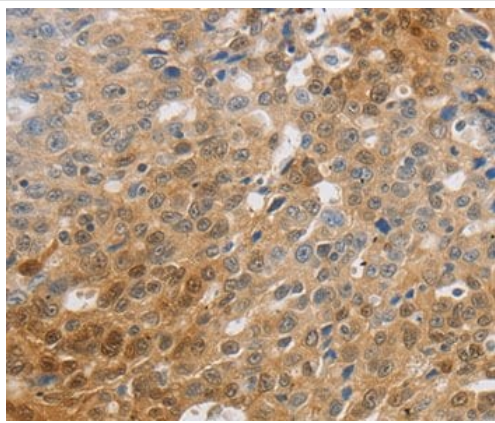


Western blot - Anti-MCT2 antibody - C-terminal (ab198272)

Anti-MCT2 antibody - C-terminal (ab198272) at 1/1200 dilution + A549 cell lysate at 30 µg

Predicted band size: 52 kDa

Exposure time: 40 seconds



Immunohistochemistry (Formalin/PFA-fixed paraffin-embedded sections) - Anti-MCT2 antibody - C-terminal (ab198272)

Immunohistochemical analysis of paraffin-embedded Human ovarian cancer tissue labeling MCT2 with ab198272 at 1/70 dilution.

Please note: All products are "FOR RESEARCH USE ONLY. NOT FOR USE IN DIAGNOSTIC PROCEDURES"

Our Abpromise to you: Quality guaranteed and expert technical support

- Replacement or refund for products not performing as stated on the datasheet
- Valid for 12 months from date of delivery
- Response to your inquiry within 24 hours
- We provide support in Chinese, English, French, German, Japanese and Spanish
- Extensive multi-media technical resources to help you
- We investigate all quality concerns to ensure our products perform to the highest standards

If the product does not perform as described on this datasheet, we will offer a refund or replacement. For full details of the Abpromise, please visit <https://www.abcam.com/abpromise> or contact our technical team.

Terms and conditions

- Guarantee only valid for products bought direct from Abcam or one of our authorized distributors