

Product datasheet

Anti-ME2 antibody [EPR7218] ab126616

Recombinant RabMAb

8 Images

Overview

Product name	Anti-ME2 antibody [EPR7218]
Description	Rabbit monoclonal [EPR7218] to ME2
Host species	Rabbit
Tested applications	Suitable for: WB, IHC-P, Flow Cyt, ICC/IF
Species reactivity	Reacts with: Human Does not react with: Rat
Immunogen	Synthetic peptide, corresponding to residues in Human ME2. (Uniprot: P23368).
Positive control	Jurkat, HeLa, K562 and MOLT4 cell lysates; Human colon tissue; HeLa cells; 293T .
General notes	<p>Mouse: We have preliminary internal testing data to indicate this antibody may not react with these species. Please contact us for more information.</p> <p>This product is a recombinant monoclonal antibody, which offers several advantages including:</p> <ul style="list-style-type: none"> - High batch-to-batch consistency and reproducibility - Improved sensitivity and specificity - Long-term security of supply - Animal-free production <p>For more information see here.</p> <p>Our RabMAb[®] technology is a patented hybridoma-based technology for making rabbit monoclonal antibodies. For details on our patents, please refer to RabMAb[®] patents.</p> <p>We are constantly working hard to ensure we provide our customers with best in class antibodies. As a result of this work we are pleased to now offer this antibody in purified format. We are in the process of updating our datasheets. The purified format is designated 'PUR' on our product labels. If you have any questions regarding this update, please contact our Scientific Support team.</p> <p>Reproducibility is key to advancing scientific discovery and accelerating scientists' next breakthrough.</p> <p>Abcam is leading the way with our range of recombinant antibodies, knockout-validated antibodies and knockout cell lines, all of which support improved reproducibility.</p> <p>We are also planning to innovate the way in which we present recommended applications and species on our product datasheets, so that only applications & species that have been tested in our own labs, our suppliers or by selected trusted collaborators are covered by our Abpromise[™] guarantee.</p>

In preparation for this, we have started to update the applications & species that this product is Abpromise guaranteed for.

We are also updating the applications & species that this product has been “predicted to work with,” however this information is not covered by our Abpromise guarantee.

Applications & species from publications and Abreviews that have not been tested in our own labs or in those of our suppliers are not covered by the Abpromise guarantee.

Please check that this product meets your needs before purchasing. If you have any questions, special requirements or concerns, please send us an inquiry and/or contact our Support team ahead of purchase. Recommended alternatives for this product can be found below, as well as customer reviews and Q&As.

Properties

Form	Liquid
Storage instructions	Shipped at 4°C. Store at +4°C short term (1-2 weeks). Upon delivery aliquot. Store at -20°C long term. Stable for 12 months at -20°C.
Storage buffer	pH: 7.20 Preservative: 0.01% Sodium azide Constituents: 59% PBS, 0.05% BSA, 40% Glycerol (glycerin, glycerine)
Purity	Protein A purified
Clonality	Monoclonal
Clone number	EPR7218
Isotype	IgG

Applications

Our [Abpromise guarantee](#) covers the use of **ab126616** in the following tested applications.

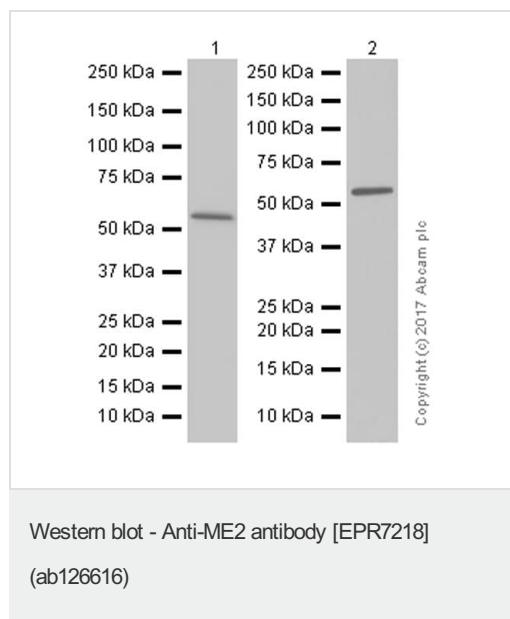
The application notes include recommended starting dilutions; optimal dilutions/concentrations should be determined by the end user.

Application	Abreviews	Notes
WB		1/1000 - 1/10000. Detects a band of approximately 65 kDa (predicted molecular weight: 65 kDa).
IHC-P		1/1000. Perform heat mediated antigen retrieval before commencing with IHC staining protocol. For unpurified use at 1/50 - 1/100.
Flow Cyt		1/150.
ICC/IF		1/100 - 1/250.

Target

Sequence similarities	Belongs to the malic enzymes family.
Cellular localization	Mitochondrion matrix.

Images



All lanes : Anti-ME2 antibody [EPR7218] (ab126616) at 1/5000 dilution (purified)

Lane 1 : HeLa (Human cervix adenocarcinoma epithelial cell) whole cell lysates

Lane 2 : 293T (Human embryonic kidney epithelial cell) whole cell lysates

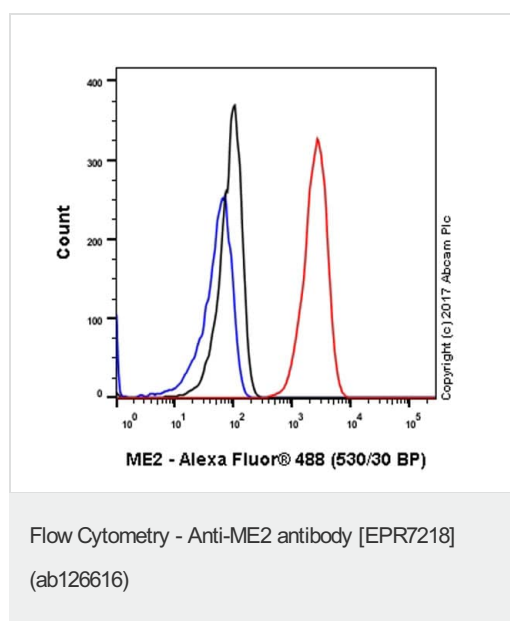
Lysates/proteins at 15 µg per lane.

Secondary

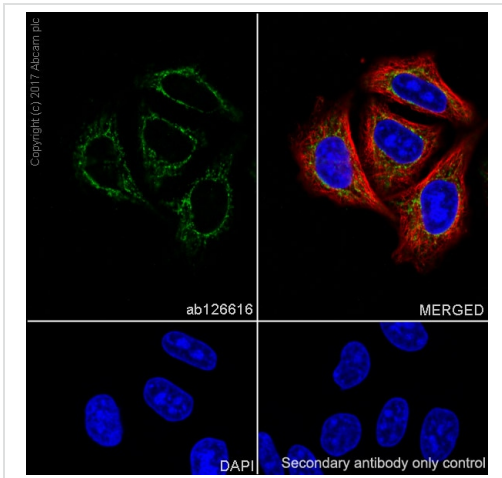
All lanes : Goat Anti-Rabbit IgG H&L (HRP) (ab97051) at 1/20000 dilution

Predicted band size: 65 kDa

Blocking and diluting buffer: 5% NFDm/TBST

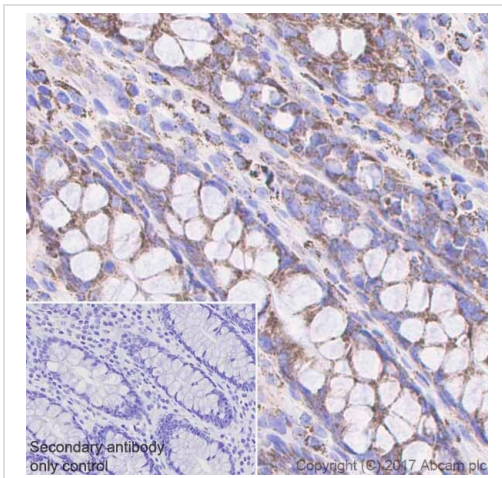


Flow Cytometry analysis of Jurkat (Human T cell leukemia T lymphocyte) cells labeling ME2 with purified ab126616 at 1:150 dilution (10 µg/ml) (red). Cells were fixed with 4% Paraformaldehyde and permeabilized with 90% Methanol. A Goat anti rabbit IgG (Alexa Fluor® 488) secondary antibody was used at 1:2000 dilution. Isotype control - Rabbit monoclonal IgG (Black). Unlabeled control - Cell without incubation with primary antibody and secondary antibody (Blue).



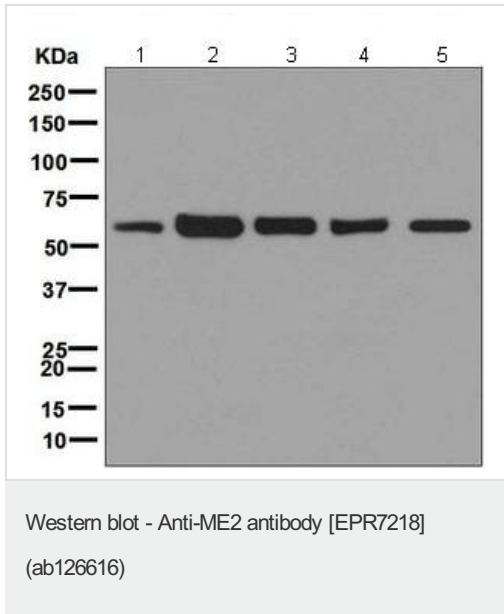
Immunocytochemistry/ Immunofluorescence - Anti-ME2 antibody [EPR7218] (ab126616)

Immunocytochemistry/ Immunofluorescence analysis of HeLa (Human cervix adenocarcinoma epithelial cell) cells labeling ME2 with purified ab126616 at 1:150 dilution (9.1 µg/ml). Cells were fixed in 100% Methanol. [ab150077](#) Goat anti rabbit IgG(Alexa Fluor® 488) was used as the secondary antibody at 1:1000 dilution. DAPI nuclear counterstain. PBS instead of the primary antibody was used as the secondary antibody only control.



Immunohistochemistry (Formalin/PFA-fixed paraffin-embedded sections) - Anti-ME2 antibody [EPR7218] (ab126616)

Immunohistochemistry (Formalin/PFA-fixed paraffin-embedded sections) analysis of human colon tissue sections labeling Me2 with Purified ab126616 at 1:1000 dilution (1.4 µg/ml). Heat mediated antigen retrieval was performed using [ab93684](#) (Tris/EDTA buffer, pH 9.0). Tissue was counterstained with Hematoxylin. ImmunoHistoProbe one step HRP Polymer (ready to use) secondary antibody was used at 1:0 dilution. PBS instead of the primary antibody was used as the negative control.



All lanes : Anti-ME2 antibody [EPR7218] (ab126616) at 1/1000 dilution (unpurified)

Lane 1 : 293T cell lysate

Lane 2 : Jurkat cell lysate

Lane 3 : HeLa cell lysate

Lane 4 : K562 cell lysate

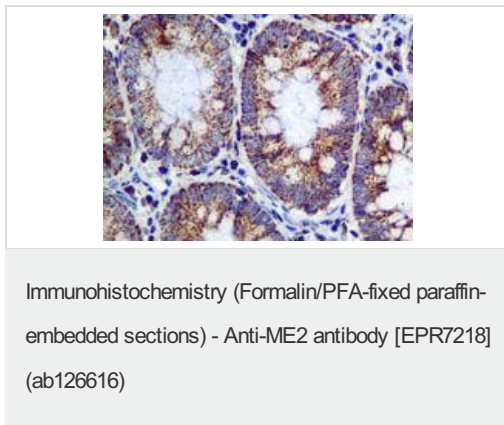
Lane 5 : MOLT4 cell lysate

Lysates/proteins at 10 µg per lane.

Secondary

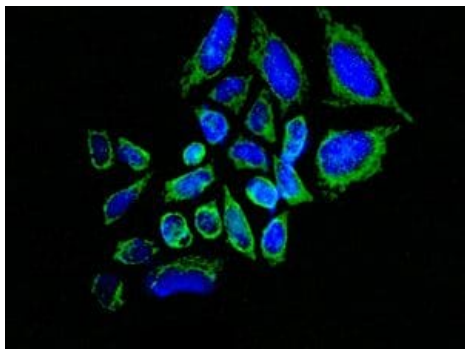
All lanes : Goat Anti-rabbit HRP at 1/2000 dilution

Predicted band size: 65 kDa



Unpurified ab126616, at 1/50 dilution, staining ME2 in Formalin-fixed, Paraffin-embedded Human colon tissue by Immunohistochemistry.

Perform heat mediated antigen retrieval before commencing with IHC staining protocol.



Unpurified ab126616, at 1/100 dilution, staining ME2 in HeLa cells by Immunofluorescence.

Immunocytochemistry/ Immunofluorescence - Anti-ME2 antibody [EPR7218] (ab126616)

Why choose a recombinant antibody?



Research with confidence
Consistent and reproducible results



Long-term and scalable supply
Recombinant technology



Success from the first experiment
Confirmed specificity



Ethical standards compliant
Animal-free production

Anti-ME2 antibody [EPR7218] (ab126616)

Please note: All products are "FOR RESEARCH USE ONLY. NOT FOR USE IN DIAGNOSTIC PROCEDURES"

Our Abpromise to you: Quality guaranteed and expert technical support

- Replacement or refund for products not performing as stated on the datasheet
- Valid for 12 months from date of delivery
- Response to your inquiry within 24 hours
- We provide support in Chinese, English, French, German, Japanese and Spanish
- Extensive multi-media technical resources to help you
- We investigate all quality concerns to ensure our products perform to the highest standards

If the product does not perform as described on this datasheet, we will offer a refund or replacement. For full details of the Abpromise, please visit <https://www.abcam.com/abpromise> or contact our technical team.

Terms and conditions

- Guarantee only valid for products bought direct from Abcam or one of our authorized distributors