


Product datasheet

Anti-MED30 / TRAP25 antibody ab49456

3 Images

Overview

| | |
|----------------------------|--|
| Product name | Anti-MED30 / TRAP25 antibody |
| Description | Rabbit polyclonal to MED30 / TRAP25 |
| Host species | Rabbit |
| Tested applications | Suitable for: ICC/IF, WB |
| Species reactivity | Reacts with: Human Predicted to work with: Cow, Dog, Chimpanzee  |
| Immunogen | Synthetic peptide conjugated to KLH derived from within residues 1 - 100 of Human MED30/TRAP25. Read Abcam's proprietary immunogen policy (Peptide available as ab71170 .) |
| Positive control | This antibody gave a positive signal in the following Human Lysates: HCT 116 Whole Cell HEK293 Whole Cell TE 671 Whole Cell This antibody gave a positive result when used in the following methanol fixed cell lines: HepG2 |

Properties

| | |
|-----------------------------|--|
| Form | Liquid |
| Storage instructions | Shipped at 4°C. Store at +4°C short term (1-2 weeks). Upon delivery aliquot. Store at -20°C or -80°C. Avoid freeze / thaw cycle. |
| Storage buffer | pH: 7.40 Preservative: 0.02% Sodium azide Constituent: PBS Batches of this product that have a concentration < 1mg/ml may have BSA added as a stabilising agent. If you would like information about the formulation of a specific lot, please contact our scientific support team who will be happy to help. |
| Purity | Immunogen affinity purified |
| Clonality | Polyclonal |
| Isotype | IgG |

Applications

Our [Abpromise guarantee](#) covers the use of **ab49456** in the following tested applications.

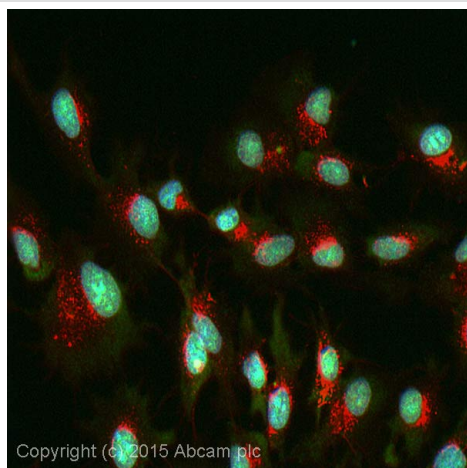
The application notes include recommended starting dilutions; optimal dilutions/concentrations should be determined by the end user.

| Application | Abreviews | Notes |
|-------------|-----------|--|
| ICC/IF | | Use a concentration of 5 µg/ml. |
| WB | | Use a concentration of 1 µg/ml. Detects a band of approximately 22 kDa (predicted molecular weight: 20 kDa). |

Target

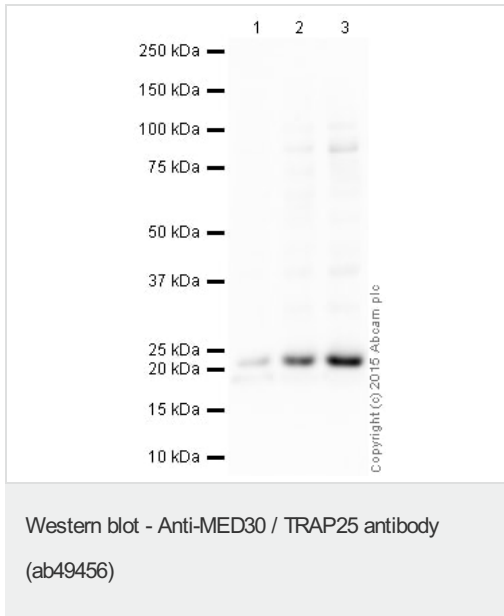
| | |
|------------------------------|--|
| Function | Component of the Mediator complex, a coactivator involved in the regulated transcription of nearly all RNA polymerase II-dependent genes. Mediator functions as a bridge to convey information from gene-specific regulatory proteins to the basal RNA polymerase II transcription machinery. Mediator is recruited to promoters by direct interactions with regulatory proteins and serves as a scaffold for the assembly of a functional preinitiation complex with RNA polymerase II and the general transcription factors. |
| Tissue specificity | Expressed in brain, heart, kidney, liver, lung, pancreas, placenta and skeletal muscle. |
| Sequence similarities | Belongs to the Mediator complex subunit 30 family. |
| Cellular localization | Nucleus. |

Images



Immunocytochemistry/ Immunofluorescence - Anti-MED30 / TRAP25 antibody (ab49456)

ICC/IF image of ab49456 stained HepG2 cells. The cells were 100% methanol fixed (5 min) then permeabilised using 0.1% PBS-Triton and then incubated in 1%BSA / 10% normal goat serum / 0.3M glycine in 0.1% PBS-Tween for 1h to further permeabilise the cells and block non-specific protein-protein interactions. The cells were then incubated with the antibody ab49456 at 1µg/ml overnight at +4°C. The secondary antibody (pseudo-colored green) was Alexa Fluor® 488 goat anti- rabbit ([ab150081](#)) IgG (H+L) preadsorbed, used at a 1/1000 dilution for 1h. Alexa Fluor® 594 WGA was used to label plasma membranes (pseudo-colored red) at a 1/200 dilution for 1h at room temperature. DAPI was used to stain the cell nuclei (pseudo-colored blue) at a concentration of 1.43µM for 1 hour at room temperature.



All lanes : Anti-MED30 / TRAP25 antibody (ab49456) at 1 µg/ml

Lane 1 : HCT 116 (Human Colorectal Carcinoma) Whole Cell Lysate

Lane 2 : HEK293 (Human embryonic kidney cell line) Whole Cell Lysate

Lane 3 : TE 671 (Human Rhabdomyosarcoma) Whole Cell Lysate

Lysates/proteins at 10 µg per lane.

Secondary

All lanes : Goat polyclonal to Rabbit IgG - H&L - Pre-Adsorbed (HRP) at 1/50000 dilution

Developed using the ECL technique.

Performed under reducing conditions.

Predicted band size: 20 kDa

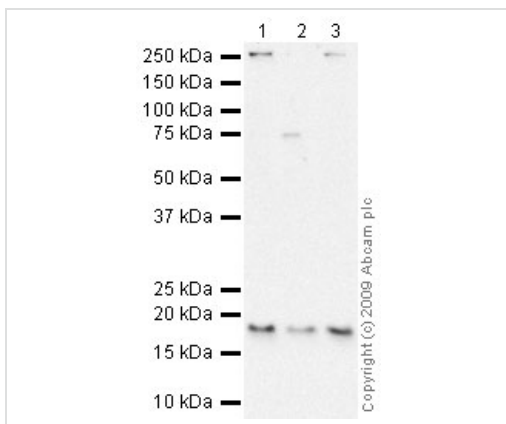
Observed band size: 22 kDa

[why is the actual band size different from the predicted?](#)

Additional bands at: 19 kDa, 85 kDa. We are unsure as to the identity of these extra bands.

Exposure time: 8 minutes

This blot was produced using a 4-12% Bis-tris gel under the MES buffer system. The gel was run at 200V for 35 minutes before being transferred onto a Nitrocellulose membrane at 30V for 70 minutes. The membrane was then blocked for an hour using 2% Bovine Serum Albumin before being incubated with ab49456 overnight at 4°C. Antibody binding was detected using an anti-rabbit antibody conjugated to HRP, and visualised using ECL development solution [ab133406](#).



Western blot - Anti-MED30 / TRAP25 antibody
(ab49456)

All lanes : Anti-MED30 / TRAP25 antibody (ab49456) at 1 µg/ml

Lane 1 : HCT 116 (Human Colorectal Carcinoma) Whole Cell Lysate

Lane 2 : HEK293 (Human embryonic kidney cell line) Whole Cell Lysate

Lane 3 : TE 671 (Human Rhabdomyosarcoma) Whole Cell Lysate

Lysates/proteins at 10 µg per lane.

Secondary

All lanes : Goat polyclonal to Rabbit IgG - H&L - Pre-Adsorbed (HRP) at 1/3000 dilution

Developed using the ECL technique.

Performed under reducing conditions.

Predicted band size: 20 kDa

Observed band size: 19 kDa [why is the actual band size different from the predicted?](#)

Additional bands at: 250 kDa, 75 kDa. We are unsure as to the identity of these extra bands.

Exposure time: 18 minutes

Please note: All products are "FOR RESEARCH USE ONLY. NOT FOR USE IN DIAGNOSTIC PROCEDURES"

Our Abpromise to you: Quality guaranteed and expert technical support

- Replacement or refund for products not performing as stated on the datasheet
- Valid for 12 months from date of delivery
- Response to your inquiry within 24 hours
- We provide support in Chinese, English, French, German, Japanese and Spanish
- Extensive multi-media technical resources to help you
- We investigate all quality concerns to ensure our products perform to the highest standards

If the product does not perform as described on this datasheet, we will offer a refund or replacement. For full details of the Abpromise, please visit <https://www.abcam.com/abpromise> or contact our technical team.

Terms and conditions

- Guarantee only valid for products bought direct from Abcam or one of our authorized distributors