


## Product datasheet

# Anti-MEIS1 antibody ab222246

1 Image

### Overview

---

<b>Product name</b>	Anti-MEIS1 antibody
<b>Description</b>	Rabbit polyclonal to MEIS1
<b>Host species</b>	Rabbit
<b>Tested applications</b>	<b>Suitable for:</b> ICC/IF
<b>Species reactivity</b>	<b>Reacts with:</b> Human <b>Predicted to work with:</b> Mouse, Rat 
<b>Immunogen</b>	Recombinant fragment corresponding to Human MEIS1 aa 42-69. Sequence: GPPLHSHQYPHTAHTNAMAPSMGSSVND  Database link: <a href="#">O00470</a>  <a href="#">Run BLAST with</a> <a href="#">Run BLAST with</a>
<b>Positive control</b>	ICC/IF: HeLa cells.

### Properties

---

<b>Form</b>	Liquid
<b>Storage instructions</b>	Shipped at 4°C. Store at +4°C short term (1-2 weeks). Upon delivery aliquot. Store at -20°C long term. Avoid freeze / thaw cycle.
<b>Storage buffer</b>	pH: 7.2 Preservative: 0.02% Sodium azide Constituents: 40% Glycerol, PBS
<b>Purity</b>	Immunogen affinity purified
<b>Clonality</b>	Polyclonal
<b>Isotype</b>	IgG

### Applications

---

Our [Abpromise guarantee](#) covers the use of **ab222246** in the following tested applications.

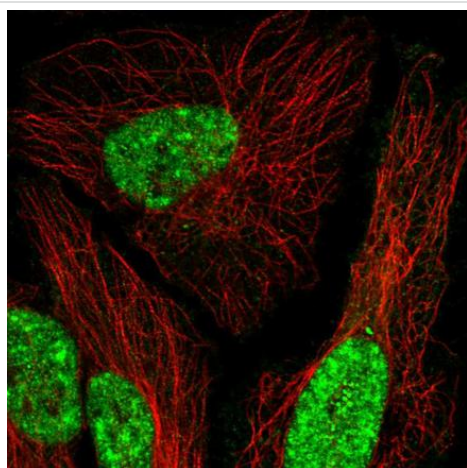
The application notes include recommended starting dilutions; optimal dilutions/concentrations should be determined by the end user.

Application	Abreviews	Notes
ICC/IF		Use a concentration of 1 - 4 µg/ml. Fixation/Permeabilization: PFA/Triton-X 100

## Target

<b>Function</b>	Acts as a transcriptional regulator of PAX6. Acts as a transcriptional activator of PF4 in complex with PBX1 or PBX2. Required for hematopoiesis, megakaryocyte lineage development and vascular patterning. May function as a cofactor for HOXA7 and HOXA9 in the induction of myeloid leukemias.
<b>Tissue specificity</b>	Expressed at low level in normal immunohepatopoietic tissues, including the fetal liver. Expressed in a subset of myeloid leukemia cell lines, with the highest expression seen in those with a megakaryocytic-erythroid phenotype. Also expressed at high levels in the cerebellum.
<b>Involvement in disease</b>	Defects in MEIS1 could be a cause of susceptibility to restless legs syndrome type 7 (RLS7) [MIM:612853]. Restless legs syndrome (RLS) is a neurologic sleep/wake disorder characterized by uncomfortable and unpleasant sensations in the legs that appear at rest, usually at night, inducing an irresistible desire to move the legs. The disorder results in nocturnal insomnia and chronic sleep deprivation.
<b>Sequence similarities</b>	Belongs to the TALE/MEIS homeobox family. Contains 1 homeobox DNA-binding domain.
<b>Cellular localization</b>	Nucleus.

## Images



4% paraformaldehyde-fixed, 0.1% Triton X-100 permeabilized HeLa (human epithelial cell line from cervix adenocarcinoma) cells stained for MEIS1 (green) using ab222246 at 4 µg/ml in ICC/IF.

Immunocytochemistry/ Immunofluorescence - Anti-MEIS1 antibody (ab222246)

**Please note:** All products are "FOR RESEARCH USE ONLY. NOT FOR USE IN DIAGNOSTIC PROCEDURES"

## **Our Abpromise to you: Quality guaranteed and expert technical support**

---

- Replacement or refund for products not performing as stated on the datasheet
- Valid for 12 months from date of delivery
- Response to your inquiry within 24 hours
  
- We provide support in Chinese, English, French, German, Japanese and Spanish
- Extensive multi-media technical resources to help you
- We investigate all quality concerns to ensure our products perform to the highest standards

If the product does not perform as described on this datasheet, we will offer a refund or replacement. For full details of the Abpromise, please visit <https://www.abcam.com/abpromise> or contact our technical team.

## **Terms and conditions**

---

- Guarantee only valid for products bought direct from Abcam or one of our authorized distributors