

Product datasheet

Anti-Meis2.1 antibody ab209705

2 Images

Overview

<b>Product name</b>	Anti-Meis2.1 antibody
<b>Description</b>	Rabbit polyclonal to Meis2.1
<b>Host species</b>	Rabbit
<b>Tested applications</b>	<b>Suitable for:</b> IHC - Wholemount, WB
<b>Species reactivity</b>	<b>Reacts with:</b> Zebrafish
<b>Immunogen</b>	Recombinant fragment within Zebrafish Meis2.1 aa 62-320. The exact sequence is proprietary. Database link: <a href="#">Q9PTM7</a>
<b>Positive control</b>	Zebrafish brain and liver tissue extracts; Zebrafish embryo.

Properties

<b>Form</b>	Liquid
<b>Storage instructions</b>	Shipped at 4°C. Store at +4°C short term (1-2 weeks). Upon delivery aliquot. Store at -20°C long term. Avoid freeze / thaw cycle.
<b>Storage buffer</b>	pH: 7.00 Preservative: 0.01% Thimerosal (merthiolate) Constituents: 1.21% Tris, 0.75% Glycine, 20% Glycerol
<b>Purity</b>	Immunogen affinity purified
<b>Clonality</b>	Polyclonal
<b>Isotype</b>	IgG

Applications

Our [Abpromise guarantee](#) covers the use of **ab209705** in the following tested applications.

The application notes include recommended starting dilutions; optimal dilutions/concentrations should be determined by the end user.

Application	Abreviews	Notes
IHC - Wholemount		1/100 - 1/500.
WB		1/1000 - 1/10000. Predicted molecular weight: 43 kDa.

## Target

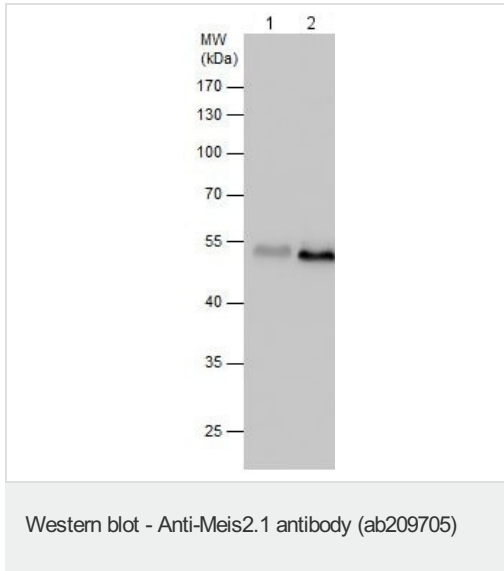
---

**Cellular localization**

Nuclear

## Images

---



**All lanes :** Anti-Meis2.1 antibody (ab209705) at 1/5000 dilution

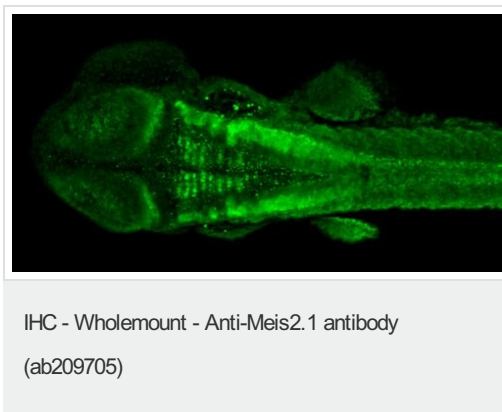
**Lane 1 :** Zebrafish brain tissue extract

**Lane 2 :** Zebrafish liver tissue extract

Lysates/proteins at 30 µg per lane.

**Predicted band size:** 43 kDa

10 % SDS-PAGE



Immunohistochemical analysis (whole mount) of Zebrafish embryo 2 days-post-fertilization, labeling Meis2.1 with ab209705 at 1/100 dilution.

**Please note:** All products are "FOR RESEARCH USE ONLY. NOT FOR USE IN DIAGNOSTIC PROCEDURES"

## Our Abpromise to you: Quality guaranteed and expert technical support

---

- Replacement or refund for products not performing as stated on the datasheet
- Valid for 12 months from date of delivery
- Response to your inquiry within 24 hours
- We provide support in Chinese, English, French, German, Japanese and Spanish
- Extensive multi-media technical resources to help you
- We investigate all quality concerns to ensure our products perform to the highest standards

If the product does not perform as described on this datasheet, we will offer a refund or replacement. For full details of the Abpromise,

please visit <https://www.abcam.com/abpromise> or contact our technical team.

## **Terms and conditions**

---

- Guarantee only valid for products bought direct from Abcam or one of our authorized distributors