

## Product datasheet

# Anti-MEK3 antibody [EP555Y] ab40836

**KO VALIDATED** Recombinant RabMAb

3 Images

### Overview

<b>Product name</b>	Anti-MEK3 antibody [EP555Y]
<b>Description</b>	Rabbit monoclonal [EP555Y] to MEK3
<b>Host species</b>	Rabbit
<b>Specificity</b>	This antibody is specific for MEK3.
<b>Tested applications</b>	<b>Suitable for:</b> WB <b>Unsuitable for:</b> ICC or IHC
<b>Species reactivity</b>	<b>Reacts with:</b> Human
<b>Immunogen</b>	Synthetic peptide. This information is proprietary to Abcam and/or its suppliers.
<b>Positive control</b>	Jurkat, HeLa, MCF-7 and K562 cell lysate.
<b>General notes</b>	<p>This product is a recombinant monoclonal antibody, which offers several advantages including:</p> <ul style="list-style-type: none"> <li>- High batch-to-batch consistency and reproducibility</li> <li>- Improved sensitivity and specificity</li> <li>- Long-term security of supply</li> <li>- Animal-free production</li> </ul> <p>For more information <a href="#">see here</a>.</p> <p>Our RabMAb<sup>®</sup> technology is a patented hybridoma-based technology for making rabbit monoclonal antibodies. For details on our patents, please refer to <a href="#">RabMAb<sup>®</sup> patents</a>.</p> <p>Mouse, Rat: We have preliminary internal testing data to indicate this antibody may not react with these species. Please contact us for more information.</p>

### Properties

<b>Form</b>	Liquid
<b>Storage instructions</b>	Shipped at 4°C. Upon delivery aliquot and store at -20°C. Avoid freeze / thaw cycles.
<b>Storage buffer</b>	pH: 7.20 Preservative: 0.01% Sodium azide Constituents: 9% PBS, 40% Glycerol (glycerin, glycerine), 0.05% BSA, 50% Tissue culture supernatant
<b>Purity</b>	Tissue culture supernatant

<b>Clonality</b>	Monoclonal
<b>Clone number</b>	EP555Y
<b>Isotype</b>	IgG

## Applications

**The Abpromise guarantee** Our [Abpromise guarantee](#) covers the use of ab40836 in the following tested applications. The application notes include recommended starting dilutions; optimal dilutions/concentrations should be determined by the end user.

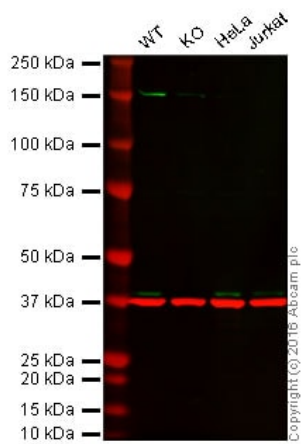
Application	Abreviews	Notes
WB		1/5000 - 1/20000. Detects a band of approximately 40 kDa (predicted molecular weight: 39 kDa).

**Application notes** Is unsuitable for ICC or IHC.

## Target

<b>Function</b>	Dual specificity kinase. Is activated by cytokines and environmental stress in vivo. Catalyzes the concomitant phosphorylation of a threonine and a tyrosine residue in the MAP kinase p38.
<b>Tissue specificity</b>	Abundant expression is seen in the skeletal muscle. It is also widely expressed in other tissues.
<b>Involvement in disease</b>	Note=Defects in MAP2K3 may be involved in colon cancer.
<b>Sequence similarities</b>	Belongs to the protein kinase superfamily. STE Ser/Thr protein kinase family. MAP kinase kinase subfamily. Contains 1 protein kinase domain.
<b>Post-translational modifications</b>	Autophosphorylated. Phosphorylation on Ser-218 and Thr-222 by MAP kinase kinase kinases regulates positively the kinase activity. Yersinia yopJ may acetylate Ser/Thr residues, preventing phosphorylation and activation, thus blocking the MAPK signaling pathway.

## Images



Western blot - Anti-MEK3 antibody [EP555Y] (ab40836)

**Lane 1:** Wild-type HAP1 cell lysate (20 µg)

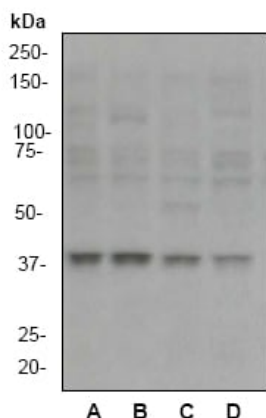
**Lane 2:** MEK3knockout HAP1 cell lysate (20 µg)

**Lane 3:** HeLa cell lysate (20 µg)

**Lane 4:** Jurkat cell lysate (20 µg)

**Lanes 1 - 4:** Merged signal (red and green). Green - ab40836 observed at 150 kDa. Red - loading control, ab8245, observed at 37 kDa.

ab40836 was shown to recognize MEK3 when MEK3 knockout samples were used, along with additional cross-reactive bands. Wild-type and MEK3 knockout samples were subjected to SDS-PAGE. ab40836 and ab8245 (loading control to GAPDH) were both diluted to 1/5000 and 1/10000 respectively and incubated overnight at 4°C. Blots were developed with Goat anti-Rabbit IgG H&L (IRDye® 800CW) preadsorbed ab216773 and Goat anti-Mouse IgG H&L (IRDye® 680RD) preadsorbed ab216776 secondary antibodies at 1/10000 dilution for 1 hour at room temperature before imaging.



Western blot - Anti-MEK3 antibody [EP555Y] (ab40836)

**All lanes :** Anti-MEK3 antibody [EP555Y] (ab40836) at 1/20000 dilution

**Lane 1 :** Jurkat cell lysate

**Lane 2 :** HeLa cell lysate

**Lane 3 :** MCF-7 cell lysate





**Lane 4 :** K562 cell lysate

Lysates/proteins at 10 µg per lane.

**Predicted band size:** 39 kDa

**Observed band size:** 40 kDa

Why choose a recombinant antibody?

 <p><b>Research with confidence</b> Consistent and reproducible results</p>	 <p><b>Long-term and scalable supply</b> Recombinant technology</p>
 <p><b>Success from the first experiment</b> Confirmed specificity</p>	 <p><b>Ethical standards compliant</b> Animal-free production</p>

Anti-MEK3 antibody [EP555Y] (ab40836)

**Please note:** All products are "FOR RESEARCH USE ONLY. NOT FOR USE IN DIAGNOSTIC PROCEDURES"

### Our Abpromise to you: Quality guaranteed and expert technical support

---

- Replacement or refund for products not performing as stated on the datasheet
- Valid for 12 months from date of delivery
- Response to your inquiry within 24 hours
- We provide support in Chinese, English, French, German, Japanese and Spanish
- Extensive multi-media technical resources to help you
- We investigate all quality concerns to ensure our products perform to the highest standards

If the product does not perform as described on this datasheet, we will offer a refund or replacement. For full details of the Abpromise, please visit <https://www.abcam.com/abpromise> or contact our technical team.

### Terms and conditions

---

- Guarantee only valid for products bought direct from Abcam or one of our authorized distributors