


Product datasheet

Anti-Melanophilin antibody ab2716

1 References 2 Images

Overview

Product name	Anti-Melanophilin antibody
Description	Goat polyclonal to Melanophilin
Host species	Goat
Tested applications	Suitable for: WB, ICC/IF
Species reactivity	Reacts with: Mouse, Human Predicted to work with: Rat 
Immunogen	Synthetic peptide corresponding to Mouse Melanophilin aa 550 to the C-terminus (C terminal). Database link: Q91V27

 [Run BLAST with](#)

 [Run BLAST with](#)

General notes

The Life Science industry has been in the grips of a reproducibility crisis for a number of years. Abcam is leading the way in addressing this with our range of recombinant monoclonal antibodies and knockout edited cell lines for gold-standard validation. Please check that this product meets your needs before purchasing.

If you have any questions, special requirements or concerns, please send us an inquiry and/or contact our Support team ahead of purchase. Recommended alternatives for this product can be found below, along with publications, customer reviews and Q&As

Properties

Form	Liquid
Storage instructions	Shipped at 4°C. Upon delivery aliquot and store at -20°C. Avoid freeze / thaw cycles.
Storage buffer	pH: 7.30 Preservative: 0.02% Sodium azide Constituents: Tris buffered saline, 0.5% BSA
Purity	Immunogen affinity purified
Purification notes	Purified from goat serum by ammonium sulphate precipitation followed by antigen affinity chromatography using the immunizing peptide.
Clonality	Polyclonal
Isotype	IgG

Applications

The Abpromise guarantee

Our [Abpromise guarantee](#) covers the use of ab2716 in the following tested applications.

The application notes include recommended starting dilutions; optimal dilutions/concentrations should be determined by the end user.

Application	Abreviews	Notes
WB		Use a concentration of 0.5 - 2 µg/ml. Predicted molecular weight: 65 kDa. 1 hour primary incubation is recommended for this product.
ICC/IF		Use a concentration of 0.5 µg/ml.

Target

Function

Rab effector protein involved in melanosome transport. Serves as link between melanosome-bound RAB27A and the motor protein MYO5A.

Involvement in disease

Defects in MLPH are a cause of Griscelli syndrome type 3 (GS3) [MIM:609227]. GS3 is a rare autosomal recessive disorder characterized by pigmentary dilution of the skin and hair, the presence of large clumps of pigment in hair shafts, and an accumulation of melanosomes in melanocytes, without other clinical manifestations.

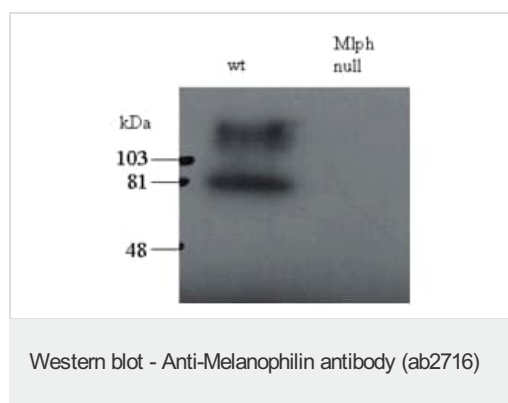
Sequence similarities

Contains 1 FYVE-type zinc finger.
Contains 1 RabBD (Rab-binding) domain.

Cellular localization

Cytoplasm.

Images



All lanes : Anti-Melanophilin antibody (ab2716) at 0.5 µg/ml

Lane 1 : total melanocyte PNS (200ug per lane) of wild-type

Lane 2 : total melanocyte PNS (200ug per lane) of leaden (Mlph null) mice

Predicted band size: 65 kDa

Observed band size: 81 kDa

ab2716 staining (3µg/ml) of Jurkat lysate (RIPA buffer, 30µg total protein per lane). Primary incubated for 12 hours. Detected by western blot using chemiluminescence.



Wild-type C57bl6 derived melanocytes were stained with ab2716 (0.5ug/ml) and detected with Alexa568 conjugated donkey anti-sheep second antibodies. Brightfield image shows melanosome distribution. Data kindly provided by A N Hume, Imperial College.

Immunocytochemistry/ Immunofluorescence - Anti-Melanophilin antibody (ab2716)

Please note: All products are "FOR RESEARCH USE ONLY. NOT FOR USE IN DIAGNOSTIC PROCEDURES"

Our Abpromise to you: Quality guaranteed and expert technical support

- Replacement or refund for products not performing as stated on the datasheet
- Valid for 12 months from date of delivery
- Response to your inquiry within 24 hours

- We provide support in Chinese, English, French, German, Japanese and Spanish
- Extensive multi-media technical resources to help you
- We investigate all quality concerns to ensure our products perform to the highest standards

If the product does not perform as described on this datasheet, we will offer a refund or replacement. For full details of the Abpromise, please visit <https://www.abcam.com/abpromise> or contact our technical team.

Terms and conditions

- Guarantee only valid for products bought direct from Abcam or one of our authorized distributors