




Product datasheet

Anti-Melatonin Receptor 1A/MTNR1A antibody ab203038

3 References 2 Images

Overview

Product name	Anti-Melatonin Receptor 1A/MTNR1A antibody
Description	Rabbit polyclonal to Melatonin Receptor 1A/MTNR1A
Host species	Rabbit
Tested applications	Suitable for: IHC-P, WB
Species reactivity	Reacts with: Mouse, Rat Predicted to work with: Cow, Human 
Immunogen	Synthetic peptide within Human Melatonin Receptor 1A/MTNR1A aa 209-242 conjugated to keyhole limpet haemocyanin. The exact sequence is proprietary. Sequence: RWILVLQVRQRVKPDRKPKLKPQDFRNFVTMFV Database link: P48039  Run BLAST with  Run BLAST with
Positive control	Rat brain tissue.
General notes	This product was previously labelled as Melatonin Receptor 1A

Properties

Form	Liquid
Storage instructions	Shipped at 4°C. Store at +4°C short term (1-2 weeks). Upon delivery aliquot. Store at -20°C long term. Avoid freeze / thaw cycle.
Storage buffer	Preservative: 0.09% Sodium azide Constituents: 50% Glycerol, 1% BSA
Purity	Protein A purified
Clonality	Polyclonal
Isotype	IgG

Applications

Our [Abpromise guarantee](#) covers the use of **ab203038** in the following tested applications.

The application notes include recommended starting dilutions; optimal dilutions/concentrations should be determined by the end user.

Application	Abreviews	Notes
IHC-P		1/100 - 1/500. Perform heat mediated antigen retrieval with citrate buffer pH 6 before commencing with IHC staining protocol.
WB		1/1000.

Target

Function

High affinity receptor for melatonin. Likely to mediate the reproductive and circadian actions of melatonin. The activity of this receptor is mediated by pertussis toxin sensitive G proteins that inhibit adenylate cyclase activity.

Tissue specificity

Expressed in hypophyseal pars tuberalis and hypothalamic suprachiasmatic nuclei (SCN). Hippocampus.

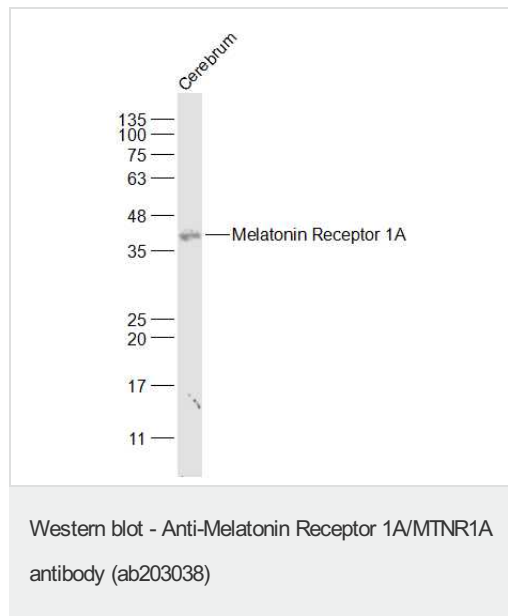
Sequence similarities

Belongs to the G-protein coupled receptor 1 family.

Cellular localization

Cell membrane.

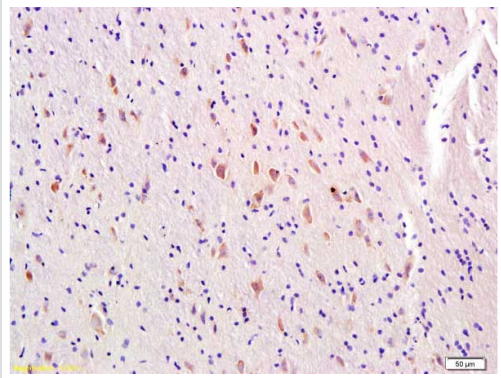
Images



Anti-Melatonin Receptor 1A/MTNR1A antibody (ab203038) at 1/1000 dilution + Cerebrum lysates

Secondary

Conjugated secondary antibody at 1/20000 dilution



Immunohistochemical analysis of formalin-fixed, paraffin-embedded rat brain tissue labeling Melatonin Receptor 1A/MTNR1A with ab203038 at 1/300 dilution, followed by secondary antibody detection and DAB staining.

Immunohistochemistry (Formalin/PFA-fixed paraffin-embedded sections) - Anti-Melatonin Receptor 1A/MTNR1A antibody (ab203038)

Please note: All products are "FOR RESEARCH USE ONLY. NOT FOR USE IN DIAGNOSTIC PROCEDURES"

Our Abpromise to you: Quality guaranteed and expert technical support

- Replacement or refund for products not performing as stated on the datasheet
- Valid for 12 months from date of delivery
- Response to your inquiry within 24 hours
- We provide support in Chinese, English, French, German, Japanese and Spanish
- Extensive multi-media technical resources to help you
- We investigate all quality concerns to ensure our products perform to the highest standards

If the product does not perform as described on this datasheet, we will offer a refund or replacement. For full details of the Abpromise, please visit <https://www.abcam.com/abpromise> or contact our technical team.

Terms and conditions

- Guarantee only valid for products bought direct from Abcam or one of our authorized distributors