



Product datasheet

# Anti-Melatonin Receptor 1B/MTNR1B antibody ab203346

7 References 2 Images

Overview

<b>Product name</b>	Anti-Melatonin Receptor 1B/MTNR1B antibody
<b>Description</b>	Rabbit polyclonal to Melatonin Receptor 1B/MTNR1B
<b>Host species</b>	Rabbit
<b>Tested applications</b>	<b>Suitable for:</b> WB, IHC-P, ICC/IF
<b>Species reactivity</b>	<b>Reacts with:</b> Mouse, Rat, Cow, Human
<b>Immunogen</b>	Synthetic peptide within Human Melatonin Receptor 1B/MTNR1B aa 222-253 conjugated to keyhole limpet haemocyanin. The exact sequence is proprietary. Sequence:  RMWLVVLQARRKAKPESRLCLKPSDLRSFLTM  Database link: <a href="#">P49286</a>   <a href="#">Run BLAST with</a>  <a href="#">Run BLAST with</a>
<b>Positive control</b>	Rat brain and retina tissues.
<b>General notes</b>	This product was previously labelled as Melatonin Receptor 1B

Properties

<b>Form</b>	Liquid
<b>Storage instructions</b>	Shipped at 4°C. Store at +4°C short term (1-2 weeks). Upon delivery aliquot. Store at -20°C long term. Avoid freeze / thaw cycle.
<b>Storage buffer</b>	Preservative: 0.09% Sodium azide Constituents: 50% Glycerol, 0.01% BSA, 49% ddH2O
<b>Purity</b>	Protein A purified
<b>Clonality</b>	Polyclonal
<b>Isotype</b>	IgG

Applications

Our [Abpromise guarantee](#) covers the use of **ab203346** in the following tested applications.

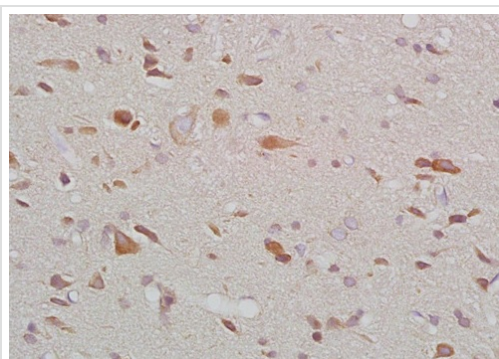
The application notes include recommended starting dilutions; optimal dilutions/concentrations should be determined by the end user.

Application	Abreviews	Notes
WB		1/100 - 1/1000. Predicted molecular weight: 40 kDa.
IHC-P		1/100 - 1/500. When using a fluorescent probe please use a dilution of 1/50 - 1/200.
ICC/IF		1/50 - 1/200.

## Target

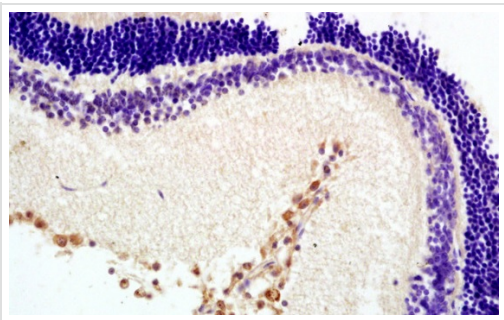
<b>Function</b>	High affinity receptor for melatonin. Likely to mediate the reproductive and circadian actions of melatonin. The activity of this receptor is mediated by pertussis toxin sensitive G proteins that inhibit adenylate cyclase activity.
<b>Tissue specificity</b>	Expressed in retina and less in brain and hippocampus.
<b>Sequence similarities</b>	Belongs to the G-protein coupled receptor 1 family.
<b>Cellular localization</b>	Cell membrane.

## Images



Immunohistochemical analysis of formalin-fixed, paraffin-embedded rat brain sections labeling Melatonin Receptor 1B/MTNR1B with ab203346 at a 1/200 dilution, followed by conjugation to the secondary antibody and DAB staining.

Immunohistochemistry (Formalin/PFA-fixed paraffin-embedded sections) - Anti-Melatonin Receptor 1B/MTNR1B antibody (ab203346)



Immunohistochemistry (Formalin/PFA-fixed paraffin-embedded sections) - Anti-Melatonin Receptor 1B/MTNR1B antibody (ab203346)

Immunohistochemical analysis of formalin-fixed, paraffin-embedded rat retina sections labeling Melatonin Receptor 1B/MTNR1B with ab203346 at a 1/200 dilution, followed by conjugation to the secondary antibody and DAB staining.

**Please note:** All products are "FOR RESEARCH USE ONLY. NOT FOR USE IN DIAGNOSTIC PROCEDURES"

### **Our Abpromise to you: Quality guaranteed and expert technical support**

---

- Replacement or refund for products not performing as stated on the datasheet
- Valid for 12 months from date of delivery
- Response to your inquiry within 24 hours
  
- We provide support in Chinese, English, French, German, Japanese and Spanish
- Extensive multi-media technical resources to help you
- We investigate all quality concerns to ensure our products perform to the highest standards

If the product does not perform as described on this datasheet, we will offer a refund or replacement. For full details of the Abpromise, please visit <https://www.abcam.com/abpromise> or contact our technical team.

### **Terms and conditions**

---

- Guarantee only valid for products bought direct from Abcam or one of our authorized distributors