

Product datasheet

Anti-Membralin antibody ab155590

2 Images

Overview

Product name	Anti-Membralin antibody
Description	Rabbit polyclonal to Membralin
Host species	Rabbit
Tested applications	Suitable for: WB, IHC-P
Species reactivity	Reacts with: Human
Immunogen	Recombinant fragment, corresponding to a region within amino acids 1-257 of Human Membralin.
Positive control	K562, THP1 and HL60 whole cell lysates; CL1-5 xenograft.

Properties

Form	Liquid
Storage instructions	Shipped at 4°C. Upon delivery aliquot. Store at -20°C or -80°C. Avoid freeze / thaw cycle.
Storage buffer	pH: 7.00 Preservative: 0.01% Thimerosal (merthiolate) Constituents: 78% PBS, 20% Glycerol, 1% BSA
Purity	Immunogen affinity purified
Clonality	Polyclonal
Isotype	IgG

Applications

Our [Abpromise guarantee](#) covers the use of **ab155590** in the following tested applications.

The application notes include recommended starting dilutions; optimal dilutions/concentrations should be determined by the end user.

Application	Abreviews	Notes
WB		1/5000 - 1/20000. Predicted molecular weight: 68 kDa.
IHC-P		1/100 - 1/1000.

Target

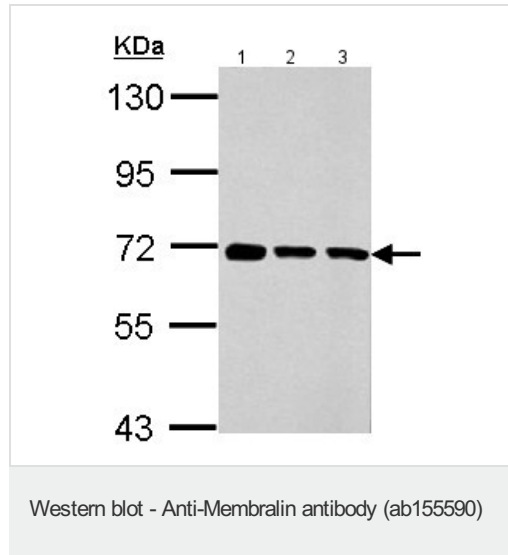
Relevance

Function: May have a role in the ERAD pathway required for clearance of misfolded proteins in the endoplasmic reticulum (ER). Promotes survival of motor neurons, probably by protecting against ER stress.

Cellular localization

Endoplasmic reticulum membrane.

Images



All lanes : Anti-Membralin antibody (ab155590) at 1/10000 dilution

Lane 1 : K562 whole cell lysate

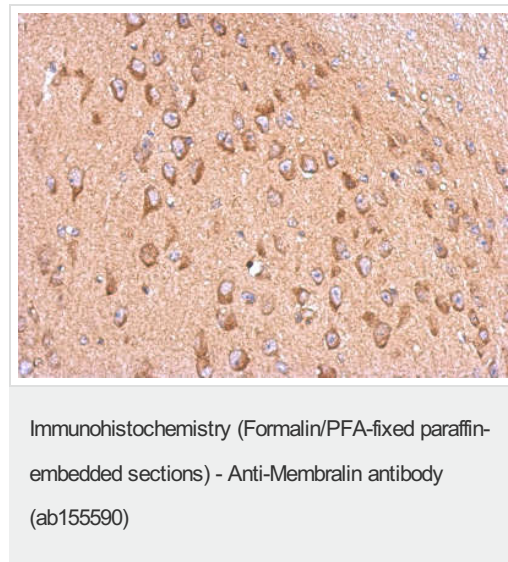
Lane 2 : THP1 whole cell lysate

Lane 3 : HL60 whole cell lysate

Lysates/proteins at 30 µg per lane.

Predicted band size: 68 kDa

7.5% SDS PAGE



Immunohistochemical analysis of paraffin-embedded CL1-5 xenograft tissue labeling Membralin with ab155590 at 1/500 dilution.

Please note: All products are "FOR RESEARCH USE ONLY AND ARE NOT INTENDED FOR DIAGNOSTIC OR THERAPEUTIC USE"

Our Abpromise to you: Quality guaranteed and expert technical support

- Replacement or refund for products not performing as stated on the datasheet
- Valid for 12 months from date of delivery
- Response to your inquiry within 24 hours

- We provide support in Chinese, English, French, German, Japanese and Spanish
- Extensive multi-media technical resources to help you
- We investigate all quality concerns to ensure our products perform to the highest standards

If the product does not perform as described on this datasheet, we will offer a refund or replacement. For full details of the Abpromise, please visit <https://www.abcam.com/abpromise> or contact our technical team.

Terms and conditions

- Guarantee only valid for products bought direct from Abcam or one of our authorized distributors