

## Product datasheet

# Anti-Metabotropic Glutamate Receptor 4/MGLUR4 antibody [EPR19280] ab184302

Recombinant RabMAb

[6 Images](#)

### Overview

---

<b>Product name</b>	Anti-Metabotropic Glutamate Receptor 4/MGLUR4 antibody [EPR19280]
<b>Description</b>	Rabbit monoclonal [EPR19280] to Metabotropic Glutamate Receptor 4/MGLUR4
<b>Host species</b>	Rabbit
<b>Tested applications</b>	<b>Suitable for:</b> IP, WB
<b>Species reactivity</b>	<b>Reacts with:</b> Mouse, Rat, Human
<b>Immunogen</b>	Synthetic peptide. This information is proprietary to Abcam and/or its suppliers.
<b>Positive control</b>	WB: Human, mouse and rat cerebellum lysates; mouse cerebellum lysate (2%SDS treated, not boiled). IP: Mouse and rat cerebellum lysates.
<b>General notes</b>	<p>This product is a recombinant monoclonal antibody, which offers several advantages including:</p> <ul style="list-style-type: none"><li>- High batch-to-batch consistency and reproducibility</li><li>- Improved sensitivity and specificity</li><li>- Long-term security of supply</li><li>- Animal-free production</li></ul> <p>For more information <a href="#">see here</a>.</p> <p>Our RabMAb<sup>®</sup> technology is a patented hybridoma-based technology for making rabbit monoclonal antibodies. For details on our patents, please refer to <a href="#">RabMAb<sup>®</sup> patents</a>.</p>

### Properties

---

<b>Form</b>	Liquid
<b>Storage instructions</b>	Shipped at 4°C. Store at +4°C short term (1-2 weeks). Upon delivery aliquot. Store at -20°C long term. Avoid freeze / thaw cycle.
<b>Storage buffer</b>	pH: 7.2 Preservative: 0.01% Sodium azide Constituents: 59% PBS, 40% Glycerol (glycerin, glycerine), 0.05% BSA
<b>Purity</b>	Protein A purified
<b>Clonality</b>	Monoclonal
<b>Clone number</b>	EPR19280

Isotype

IgG

## Applications

### The Abpromise guarantee

Our **Abpromise guarantee** covers the use of ab184302 in the following tested applications.

The application notes include recommended starting dilutions; optimal dilutions/concentrations should be determined by the end user.

Application	Abreviews	Notes
IP		1/40.
WB		1/1000. Detects a band of approximately 102 kDa (predicted molecular weight: 102 kDa).

## Target

### Function

Receptor for glutamate. The activity of this receptor is mediated by a G-protein that inhibits adenylate cyclase activity.

### Tissue specificity

Strongly expressed in the cerebellum. Expressed at low levels in hippocampus, hypothalamus and thalamus. No expression detected in liver.

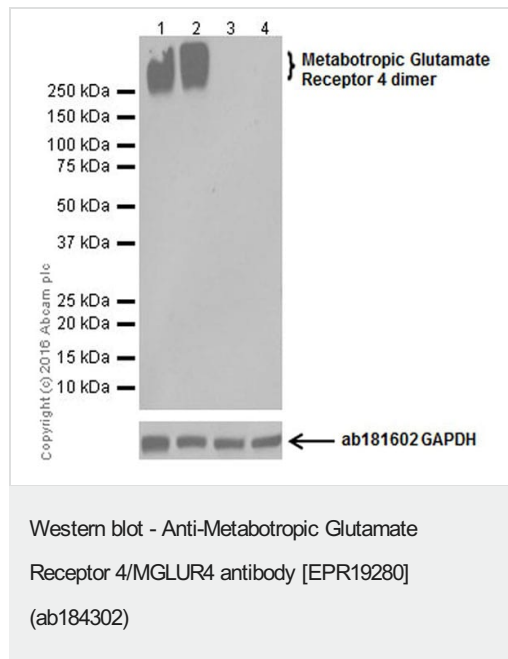
### Sequence similarities

Belongs to the G-protein coupled receptor 3 family.

### Cellular localization

Cell membrane.

## Images



**All lanes** : Anti-Metabotropic Glutamate Receptor 4/MGLUR4 antibody [EPR19280] (ab184302) at 1/1000 dilution

**Lane 1** : Mouse cerebellum tissue lysate

**Lane 2** : Rat cerebellum tissue lysate

**Lane 3** : Mouse liver tissue lysate

**Lane 4** : Rat liver tissue lysate

Lysates/proteins at 20 µg per lane.

### Secondary

**All lanes** : Goat Anti-Rabbit IgG H&L (HRP) (**ab97051**) at 1/100000 dilution

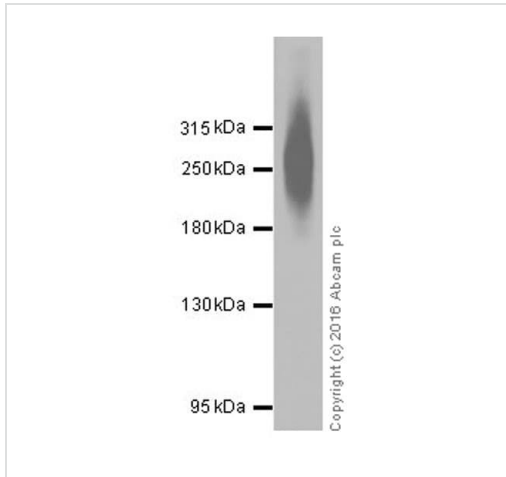
**Predicted band size:** 102 kDa

**Observed band size:** ~300 kDa

**Exposure time:** 3 minutes

Blocking/Dilution buffer: 5% NFD/MTBST.

This protein is specially expressed at cerebellum and the expression pattern is consistent with the literature (PMID:8463825, PMID:22528491), though results may vary depending on percentage acrylamide gel used.



Western blot - Anti-Metabotropic Glutamate Receptor 4/MGLUR4 antibody [EPR19280] (ab184302)

Anti-Metabotropic Glutamate Receptor 4/MGLUR4 antibody [EPR19280] (ab184302) at 1/1000 dilution + Mouse cerebellum lysate (2%SDS treated, not boiled) at 20 µg

### Secondary

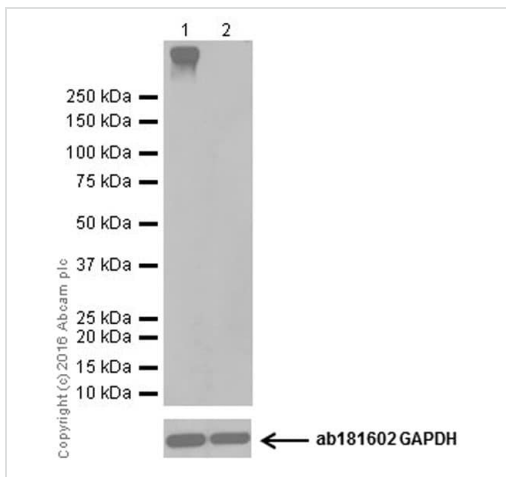
Goat Anti-Rabbit IgG H&L (HRP) (ab97051) at 1/100000 dilution

**Predicted band size:** 102 kDa

**Exposure time:** 3 minutes

Blocking/Dilution buffer: 5% NFD/MTBST.

This protein is specially expressed at cerebellum and the expression pattern is consistent with the literature (PMID:8463825, PMID:22528491), though results may vary depending on percentage acrylamide gel used.



Western blot - Anti-Metabotropic Glutamate Receptor 4/MGLUR4 antibody [EPR19280] (ab184302)

**All lanes :** Anti-Metabotropic Glutamate Receptor 4/MGLUR4 antibody [EPR19280] (ab184302) at 1/1000 dilution

**Lane 1 :** Human cerebellum lysate

**Lane 2 :** Human fetal liver tissue lysate

Lysates/proteins at 20 µg per lane.

### Secondary

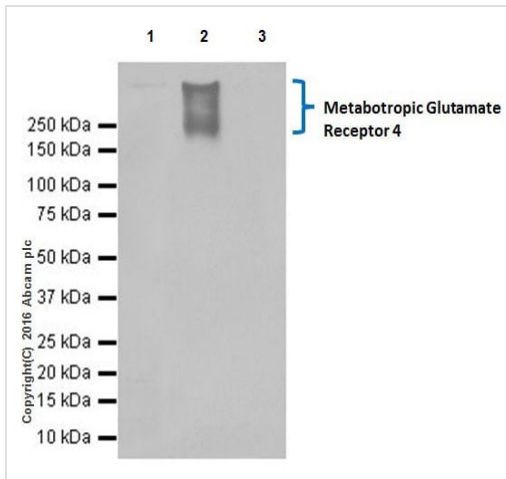
**All lanes :** Goat Anti-Rabbit IgG Peroxidase Conjugate, specific to the non-reduced form of IgG at 1/100000 dilution

**Predicted band size:** 102 kDa

**Exposure time:** 3 minutes

Blocking/Dilution buffer: 5% NFDm/TBST.

This protein is specially expressed at cerebellum and the expression pattern is consistent with the literature (PMID:8463825, PMID:22528491), though results may vary depending on percentage acrylamide gel used.



Immunoprecipitation - Anti-Metabotropic Glutamate Receptor 4/MGLUR4 antibody [EPR19280] (ab184302)

Metabotropic Glutamate Receptor 4/MGLUR4 was immunoprecipitated from 1 mg of Mouse cerebellum lysate with ab184302 at 1/40 dilution. Western blot was performed from the immunoprecipitate using ab184302 at 1/1000 dilution. VeriBlot for IP Detection Reagent (HRP) ([ab131366](#)), was used for detection at 1/10000 dilution.

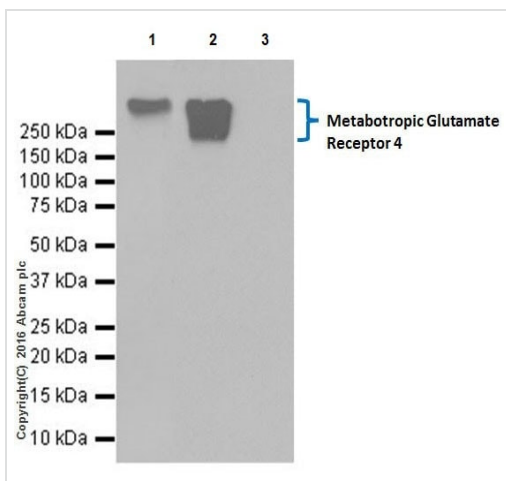
Lane 1: Mouse cerebellum lysate, 10µg (Input).

Lane 2: ab184302 IP in Mouse cerebellum lysate.

Lane 3: Rabbit IgG, monoclonal [EPR25A]-Isotype Control ([ab172730](#)) instead of ab184302 in Mouse cerebellum lysate.

Blocking and dilution buffer and concentration: 5% NFDm/TBST.

Exposure time: 30 seconds.



Immunoprecipitation - Anti-Metabotropic Glutamate Receptor 4/MGLUR4 antibody [EPR19280] (ab184302)

Metabotropic Glutamate Receptor 4/MGLUR4 was immunoprecipitated from 1 mg of Rat cerebellum lysate with ab184302 at 1/40 dilution. Western blot was performed from the immunoprecipitate using ab184302 at 1/1000 dilution. VeriBlot for IP Detection Reagent (HRP) ([ab131366](#)), was used for detection at 1/10000 dilution.

Lane 1: Rat cerebellum lysate, 10µg (Input).

Lane 2: ab184302 IP in Rat cerebellum lysate.

Lane 3: Rabbit IgG, monoclonal [EPR25A] - Isotype Control ([ab172730](#)) instead of ab184302 in Rat cerebellum lysate.

Blocking and dilution buffer and concentration: 5% NFDm/TBST.

Exposure time: 30 seconds.

### Why choose a recombinant antibody?



**Research with confidence**  
Consistent and reproducible results



**Long-term and scalable supply**  
Recombinant technology



**Success from the first experiment**  
Confirmed specificity



**Ethical standards compliant**  
Animal-free production

Anti-Metabotropic Glutamate Receptor 4/MGLUR4 antibody [EPR19280] (ab184302)

**Please note:** All products are "FOR RESEARCH USE ONLY. NOT FOR USE IN DIAGNOSTIC PROCEDURES"

### Our Abpromise to you: Quality guaranteed and expert technical support

---

- Replacement or refund for products not performing as stated on the datasheet
- Valid for 12 months from date of delivery
- Response to your inquiry within 24 hours
- We provide support in Chinese, English, French, German, Japanese and Spanish
- Extensive multi-media technical resources to help you
- We investigate all quality concerns to ensure our products perform to the highest standards

If the product does not perform as described on this datasheet, we will offer a refund or replacement. For full details of the Abpromise, please visit <https://www.abcam.com/abpromise> or contact our technical team.

### Terms and conditions

---

- Guarantee only valid for products bought direct from Abcam or one of our authorized distributors