

Product datasheet

Anti-Metabotropic Glutamate Receptor 6/MGLUR6 antibody ab154003

[3 Images](#)

Overview

Product name	Anti-Metabotropic Glutamate Receptor 6/MGLUR6 antibody
Description	Rabbit polyclonal to Metabotropic Glutamate Receptor 6/MGLUR6
Host species	Rabbit
Tested applications	Suitable for: WB, IHC-P, ICC/IF
Species reactivity	Reacts with: Human
Immunogen	Synthetic peptide corresponding to Human Metabotropic Glutamate Receptor 6/MGLUR6 aa 813-877 (C terminal).
Positive control	293T, A431, H1299 and Raji cell lysates; A431 cells; A549 xenograft
General notes	This product was previously labelled as Metabotropic Glutamate Receptor 6

The Life Science industry has been in the grips of a reproducibility crisis for a number of years. Abcam is leading the way in addressing this with our range of recombinant monoclonal antibodies and knockout edited cell lines for gold-standard validation. Please check that this product meets your needs before purchasing.

If you have any questions, special requirements or concerns, please send us an inquiry and/or contact our Support team ahead of purchase. Recommended alternatives for this product can be found below, along with publications, customer reviews and Q&As

Properties

Form	Liquid
Storage instructions	Shipped at 4°C. Upon delivery aliquot. Store at -20°C or -80°C. Avoid freeze / thaw cycle.
Storage buffer	pH: 7.00 Preservative: 0.01% Thimerosal (merthiolate) Constituents: 1.21% Tris, 0.75% Glycine, 10% Glycerol (glycerin, glycerine)
Purity	Immunogen affinity purified
Clonality	Polyclonal
Isotype	IgG

Applications

The Abpromise guarantee Our [Abpromise guarantee](#) covers the use of ab154003 in the following tested applications.

The application notes include recommended starting dilutions; optimal dilutions/concentrations should be determined by the end user.

Application	Abreviews	Notes
WB		1/500 - 1/3000. Predicted molecular weight: 95 kDa.
IHC-P		1/100 - 1/1000. Perform heat mediated antigen retrieval before commencing with IHC staining protocol using 10mM Citrate buffer (pH6.0) or Tris-EDTA buffer (pH8.0).
ICC/IF		1/100 - 1/1000.

Target

Function

Receptor for glutamate. The activity of this receptor is mediated by a G-protein that inhibits adenylate cyclase activity.

Involvement in disease

Defects in GRM6 are the cause of congenital stationary night blindness type 1B (CSNB1B) [MIM:257270]. This disorder consists of a previously unrecognized, autosomal recessive form of congenital night blindness associated with a negative electroretinogram waveform. Patients are night blind from an early age, and when maximally dark-adapted, they could perceive lights only with an intensity equal to or slightly dimmer than that normally detected by the cone system. ERGs in response to single brief flashes of light have clearly detectable a-waves, which are derived from photoreceptors, and greatly reduced b-waves, which are derived from the second-order inner retinal neurons. ERGs in response to sawtooth flickering light indicate a markedly reduced ON response and a nearly normal OFF response. There is no subjective delay in the perception of suddenly appearing white vs black objects on a gray background.

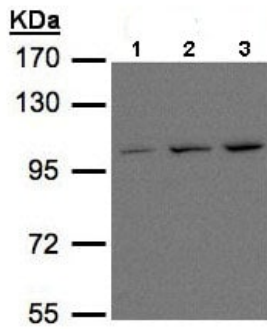
Sequence similarities

Belongs to the G-protein coupled receptor 3 family.

Cellular localization

Cell membrane.

Images



Western blot - Anti-Metabotropic Glutamate Receptor 6/MGLUR6 antibody (ab154003)

All lanes : Anti-Metabotropic Glutamate Receptor 6/MGLUR6 antibody (ab154003) at 1/500 dilution

Lane 1 : 293T whole cell lysate

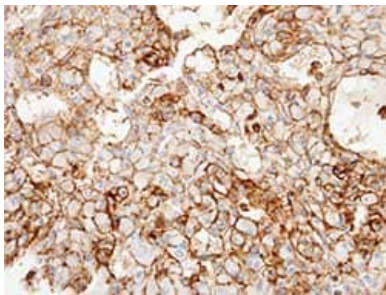
Lane 2 : A431 whole cell lysate

Lane 3 : H1299 whole cell lysate

Lysates/proteins at 30 µg per lane.

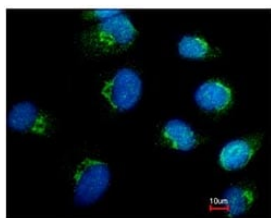
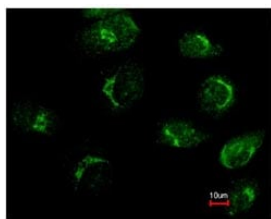
Predicted band size: 95 kDa

7.5% SDS PAGE



Immunohistochemistry (Formalin/PFA-fixed paraffin-embedded sections) - Anti-Metabotropic Glutamate Receptor 6/MGLUR6 antibody (ab154003)

Immunohistochemical analysis of paraffin-embedded A549 xenograft labeling Metabotropic Glutamate Receptor 6/MGLUR6 with ab154003 at 1/100 dilution.



Immunocytochemistry/ Immunofluorescence - Anti-Metabotropic Glutamate Receptor 6/MGLUR6 antibody (ab154003)

Immunofluorescent analysis of methanol-fixed A431 cells labeling Metabotropic Glutamate Receptor 6/MGLUR6 with ab154003 at 1/500 dilution. Lower panel co-stained with Hoechst 33342.

Please note: All products are "FOR RESEARCH USE ONLY. NOT FOR USE IN DIAGNOSTIC PROCEDURES"

Our Abpromise to you: Quality guaranteed and expert technical support

- Replacement or refund for products not performing as stated on the datasheet
- Valid for 12 months from date of delivery
- Response to your inquiry within 24 hours

- We provide support in Chinese, English, French, German, Japanese and Spanish
- Extensive multi-media technical resources to help you
- We investigate all quality concerns to ensure our products perform to the highest standards

If the product does not perform as described on this datasheet, we will offer a refund or replacement. For full details of the Abpromise, please visit <https://www.abcam.com/abpromise> or contact our technical team.

Terms and conditions

- Guarantee only valid for products bought direct from Abcam or one of our authorized distributors