

Product datasheet

Methyltransferase Activity Assay Kit (Colorimetric) ab273307

[2 Images](#)

Overview

Product name	Methyltransferase Activity Assay Kit (Colorimetric)
Detection method	Colorimetric
Sample type	Purified protein
Assay type	Enzyme activity (quantitative)
Assay duration	Multiple steps standard assay
Product overview	Methyltransferase Activity Assay Kit (Colorimetric) (ab273307) allows for kinetic evaluation of methyltransferase activity of purified enzymes and their inhibitors. The transfer of a methyl group from S-Adenosyl Methionine (SAM) cofactor to a corresponding substrate generates S-Adenosyl Homocysteine (SAH) as a product. SAH is detected by coupling the methyl transfer reaction to a multi-step enzymatic cascade, resulting in the generation of an intermediate that reacts with Probe. The reaction product exhibits a strong absorbance at 570 nm.

The limit of quantification (L.O.Q) is 296 pmol of SAH generated per min per ml (296 μ U/ml) of purified enzymes.

Notes	Abcam has not and does not intend to apply for the REACH Authorisation of customers' uses of products that contain European Authorisation list (Annex XIV) substances. It is the responsibility of our customers to check the necessity of application of REACH Authorisation, and any other relevant authorisations, for their intended uses.
--------------	---

Platform	Microplate
-----------------	------------

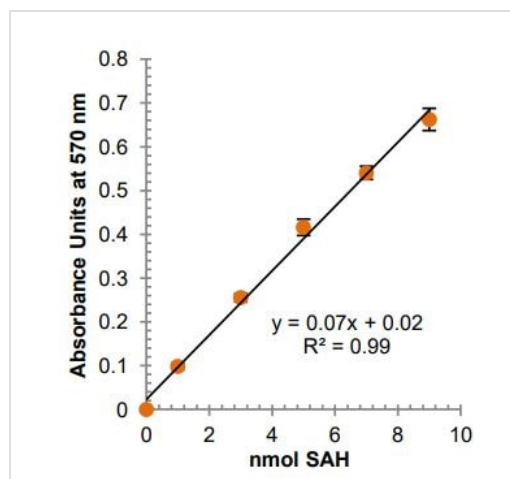
Properties

Storage instructions	Store at -20°C. Please refer to protocols.
-----------------------------	--

Components	100 tests
Enzyme Mix I (Lyophilized)	1 vial
Enzyme Mix II (Lyophilized)	1 vial

Components	100 tests
Enzyme Mix III	3 x 200µl
Enzyme Re-Suspension Buffer	1 x 1ml
MT Assay Buffer	1 x 25ml
MT Positive Control	1 x 65µl
Red Probe	1 x 200µl
SAH Standard (50 mM)	1 x 100µl
SAM Cofactor (50 mM)	1 x 250µl

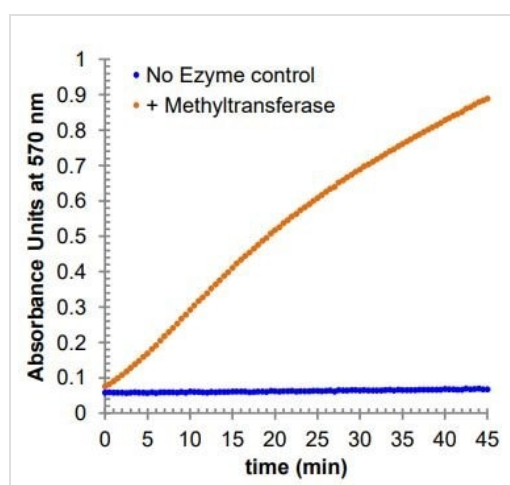
Images



Methyltransferase standard curve

Typical standard curve – data provided for demonstration purposes only. A new standard curve must be generated for each assay performed.

Typical SAH Standard Curve.



Methyltransferase activity curve

Example data.

Representative activity curve for human recombinant Nicotinamide N-Methyltransferase (NNMT) with Nicotinamide Substrate.

Please note: All products are "FOR RESEARCH USE ONLY. NOT FOR USE IN DIAGNOSTIC PROCEDURES"

Our Abpromise to you: Quality guaranteed and expert technical support

- Replacement or refund for products not performing as stated on the datasheet
- Valid for 12 months from date of delivery
- Response to your inquiry within 24 hours

- We provide support in Chinese, English, French, German, Japanese and Spanish
- Extensive multi-media technical resources to help you
- We investigate all quality concerns to ensure our products perform to the highest standards

If the product does not perform as described on this datasheet, we will offer a refund or replacement. For full details of the Abpromise, please visit <https://www.abcam.com/abpromise> or contact our technical team.

Terms and conditions

- Guarantee only valid for products bought direct from Abcam or one of our authorized distributors