

Product datasheet

Anti-MetRS/MARS antibody [EPR9873(B)] ab137105

Recombinant RabMAb

[2 Images](#)

Overview

Product name	Anti-MetRS/MARS antibody [EPR9873(B)]
Description	Rabbit monoclonal [EPR9873(B)] to MetRS/MARS
Host species	Rabbit
Tested applications	Suitable for: Flow Cyt, ICC/IF, WB Unsuitable for: IHC-P or IP
Species reactivity	Reacts with: Human
Immunogen	Synthetic peptide within Human MetRS/MARS aa 800-900. The exact sequence is proprietary.
Positive control	HepG2, HeLa, SW480 and Caco-2 cell lysates; HepG2 cells.
General notes	Mouse, Rat: We have preliminary internal testing data to indicate this antibody may not react with these species. Please contact us for more information.

This product was previously labelled as Methionyl tRNA synthetase, MARS

Our RabMAb[®] technology is a patented hybridoma-based technology for making rabbit monoclonal antibodies. For details on our patents, please refer to [RabMAb[®] patents](#).

This product is a [recombinant rabbit monoclonal antibody](#).

Properties

Form	Liquid
Storage instructions	Shipped at 4°C. Store at -20°C.
Storage buffer	Preservative: 0.01% Sodium azide Constituents: 9% PBS, 40% Glycerol, 0.05% BSA, 50% Tissue culture supernatant
Purity	Tissue culture supernatant
Clonality	Monoclonal
Clone number	EPR9873(B)
Isotype	IgG

Applications

Our [Abpromise guarantee](#) covers the use of **ab137105** in the following tested applications.

The application notes include recommended starting dilutions; optimal dilutions/concentrations should be determined by the end user.

Application	Abreviews	Notes
Flow Cyt		1/10 - 1/100. ab172730 - Rabbit monoclonal IgG, is suitable for use as an isotype control with this antibody.
ICC/IF		1/250 - 1/500.
WB		1/1000 - 1/10000. Predicted molecular weight: 101 kDa.

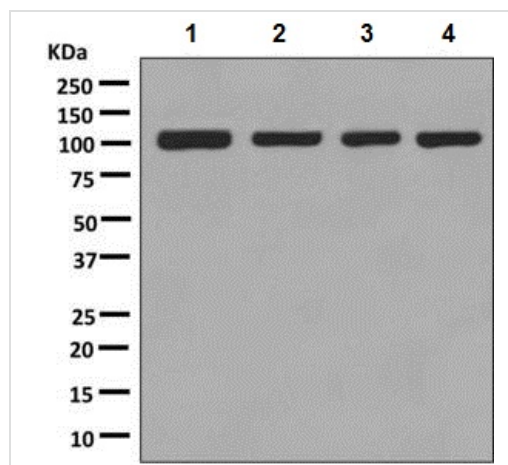
Application notes Is unsuitable for IHC-P or IP.

Target

Sequence similarities Belongs to the class-I aminoacyl-tRNA synthetase family.
Contains 1 GST C-terminal domain.
Contains 1 WHEP-TRS domain.

Cellular localization Cytoplasm.

Images



Western blot - Anti-MetRS/MARS antibody
[EPR9873(B)] (ab137105)

All lanes : Anti-MetRS/MARS antibody [EPR9873(B)] (ab137105)
at 1/1000 dilution

Lane 1 : HepG2 cell lysate

Lane 2 : HeLa cell lysate

Lane 3 : SW480 cell lysate

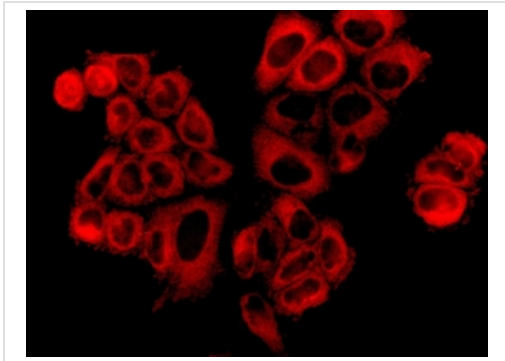
Lane 4 : Caco-2 cell lysate

Lysates/proteins at 10 µg per lane.

Secondary

All lanes : HRP-labelled Goat anti-Rabbit at 1/2000 dilution

Predicted band size: 101 kDa



Immunofluorescent analysis of HepG2 cells labelling MetRS/MARS with ab137105 at 1/250 dilution.

Immunocytochemistry/ Immunofluorescence - Anti-MetRS/MARS antibody [EPR9873(B)] (ab137105)

Please note: All products are "FOR RESEARCH USE ONLY. NOT FOR USE IN DIAGNOSTIC PROCEDURES"

Our Abpromise to you: Quality guaranteed and expert technical support

- Replacement or refund for products not performing as stated on the datasheet
- Valid for 12 months from date of delivery
- Response to your inquiry within 24 hours

- We provide support in Chinese, English, French, German, Japanese and Spanish
- Extensive multi-media technical resources to help you
- We investigate all quality concerns to ensure our products perform to the highest standards

If the product does not perform as described on this datasheet, we will offer a refund or replacement. For full details of the Abpromise, please visit <https://www.abcam.com/abpromise> or contact our technical team.

Terms and conditions

- Guarantee only valid for products bought direct from Abcam or one of our authorized distributors