


Product datasheet

Anti-METTL14 antibody ab264408

1 Image

Overview

Product name	Anti-METTL14 antibody
Description	Rabbit polyclonal to METTL14
Host species	Rabbit
Tested applications	Suitable for: IP
Species reactivity	Reacts with: Human Predicted to work with: Orangutan 
Immunogen	Synthetic peptide within Human METTL14 aa 75-125. The exact sequence is proprietary. Database link: Q9HCE5
Positive control	IP: Jurkat whole cell lysate.
General notes	<p>The Life Science industry has been in the grips of a reproducibility crisis for a number of years. Abcam is leading the way in addressing this with our range of recombinant monoclonal antibodies and knockout edited cell lines for gold-standard validation. Please check that this product meets your needs before purchasing.</p> <p>If you have any questions, special requirements or concerns, please send us an inquiry and/or contact our Support team ahead of purchase. Recommended alternatives for this product can be found below, along with publications, customer reviews and Q&As</p>

Properties

Form	Liquid
Storage instructions	Shipped at 4°C. Store at +4°C short term (1-2 weeks). Upon delivery aliquot. Store at -20°C. Avoid freeze / thaw cycle.
Storage buffer	pH: 6.8 Preservative: 0.09% Sodium azide Constituents: Tris buffered saline, 0.1% BSA
Purity	Immunogen affinity purified
Clonality	Polyclonal
Isotype	IgG

Applications

The Abpromise guarantee

Our [Abpromise guarantee](#) covers the use of ab264408 in the following tested applications.

The application notes include recommended starting dilutions; optimal dilutions/concentrations should be determined by the end user.

Application	Abreviews	Notes
IP		Use at an assay dependent concentration. Use 15-20 µl/mg lysate.

Target

Function

N6-methyltransferase that methylates adenosine residues of some mRNAs and acts as a regulator of the circadian clock and differentiation of embryonic stem cells. N6-methyladenosine (m6A), which takes place at the 5'-[AG]GAC-3' consensus sites of some mRNAs, plays a role in the efficiency of mRNA splicing, processing and mRNA stability (PubMed:24316715, PubMed:24407421, PubMed:25719671). M6A regulates the length of the circadian clock: acts as a early pace-setter in the circadian loop. M6A also acts as a regulator of mRNA stability: in embryonic stem cells (ESCs), m6A methylation of mRNAs encoding key naive pluripotency-promoting transcripts results in transcript destabilization.

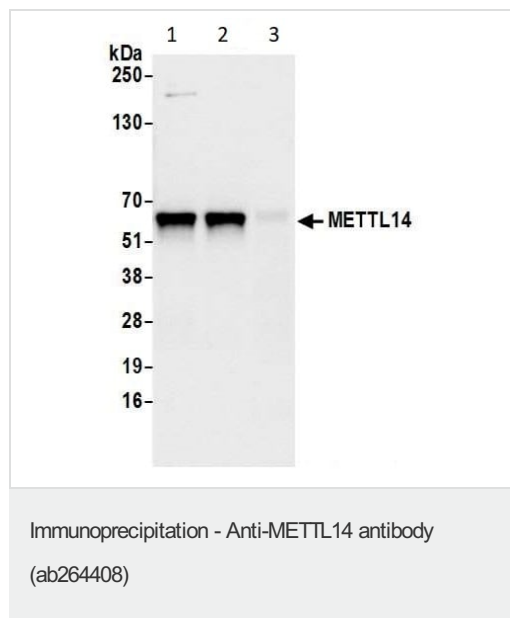
Sequence similarities

Belongs to the MT-A70-like family.

Cellular localization

Nucleus.

Images



METTL14 was immunoprecipitated from Jurkat (human T cell leukemia cell line from peripheral blood) whole cell lysate (1 mg for IP, 20% of IP loaded) with [ab252562](#) at 100 µL per reaction. Western blot was performed from the immunoprecipitate using [ab252562](#) at 1/1000 dilution.

Lane 1: [ab252562](#) IP in Jurkat whole cell lysate.

Lane 2: ab264408 IP in Jurkat whole cell lysate.

Lane 3: Control IgG IP in Jurkat whole cell lysate.

Detection: Chemiluminescence with exposure time of 3 seconds.

Lysates prepared in NETN buffer.

Please note: All products are "FOR RESEARCH USE ONLY. NOT FOR USE IN DIAGNOSTIC PROCEDURES"

Our Abpromise to you: Quality guaranteed and expert technical support

- Replacement or refund for products not performing as stated on the datasheet

- Valid for 12 months from date of delivery
- Response to your inquiry within 24 hours

- We provide support in Chinese, English, French, German, Japanese and Spanish
- Extensive multi-media technical resources to help you
- We investigate all quality concerns to ensure our products perform to the highest standards

If the product does not perform as described on this datasheet, we will offer a refund or replacement. For full details of the Abpromise, please visit <https://www.abcam.com/abpromise> or contact our technical team.

Terms and conditions

- Guarantee only valid for products bought direct from Abcam or one of our authorized distributors