

Product datasheet

Anti-METTL14 antibody [CL4252] ab220030

★★★★☆ 2 Abreviews 3 References 8 Images

Overview

Product name	Anti-METTL14 antibody [CL4252]
Description	Mouse monoclonal [CL4252] to METTL14
Host species	Mouse
Tested applications	Suitable for: ICC/IF, WB, IHC-P
Species reactivity	<p>Reacts with: Human</p> <p>Predicted to work with: Mouse, Chicken, Cow, Orangutan </p>
Immunogen	<p>Recombinant fragment (proprietary-tag) corresponding to Human METTL14 aa 1-91. Sequence:</p> <p>RSWNMDSRLQEIRERQKLRRQLLAQQLGAESADSIGAVL NSKDEQREIAE TRETCRASYDTSAPNAKRKYLDEGETDEDKMEEYKDELE MQQDEE</p> <p>Database link: Q9HCE5</p> <p style="text-align: right;"> Run BLAST with Run BLAST with</p>
Positive control	Human testis, Human endometrium, Human prostate, Human cervix, Human cerebral cortex and Human duodenum tissues; A431 cell line lysate. ICC/IF: RH-30 cells.
General notes	<p>Reproducibility is key to advancing scientific discovery and accelerating scientists' next breakthrough.</p> <p>Abcam is leading the way with our range of recombinant antibodies, knockout-validated antibodies and knockout cell lines, all of which support improved reproducibility.</p> <p>We are also planning to innovate the way in which we present recommended applications and species on our product datasheets, so that only applications & species that have been tested in our own labs, our suppliers or by selected trusted collaborators are covered by our Abpromise™ guarantee.</p> <p>In preparation for this, we have started to update the applications & species that this product is Abpromise guaranteed for.</p> <p>We are also updating the applications & species that this product has been “predicted to work with,” however this information is not covered by our Abpromise guarantee.</p> <p>Applications & species from publications and Abreviews that have not been tested in our own labs or in those of our suppliers are not covered by the Abpromise guarantee.</p>

Please check that this product meets your needs before purchasing. If you have any questions, special requirements or concerns, please send us an inquiry and/or contact our Support team ahead of purchase. Recommended alternatives for this product can be found below, as well as customer reviews and Q&As.


Properties

Form	Liquid
Storage instructions	Shipped at 4°C. Store at +4°C short term (1-2 weeks). Upon delivery aliquot. Store at -20°C long term. Avoid freeze / thaw cycle.
Storage buffer	pH: 7.20 Preservative: 0.02% Sodium azide Constituents: 40% Glycerol (glycerin, glycerine), 59% PBS
Purity	Protein A purified
Clonality	Monoclonal
Clone number	CL4252
Isotype	IgG2a

Applications

Our [Abpromise guarantee](#) covers the use of **ab220030** in the following tested applications.

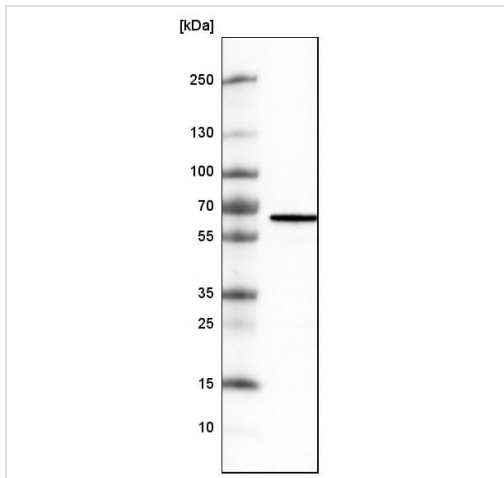
The application notes include recommended starting dilutions; optimal dilutions/concentrations should be determined by the end user.

Application	Abreviews	Notes
ICC/IF		Use a concentration of 2 - 10 µg/ml.
WB		1/500 - 1/1000. Predicted molecular weight: 52 kDa.
IHC-P		1/1000 - 1/2500. Perform heat mediated antigen retrieval with citrate buffer pH 6 before commencing with IHC staining protocol.

Target

Function	N6-methyltransferase that methylates adenosine residues of some mRNAs and acts as a regulator of the circadian clock and differentiation of embryonic stem cells. N6-methyladenosine (m6A), which takes place at the 5'-[AG]GAC-3' consensus sites of some mRNAs, plays a role in the efficiency of mRNA splicing, processing and mRNA stability (PubMed:24316715, PubMed:24407421, PubMed:25719671). M6A regulates the length of the circadian clock: acts as a early pace-setter in the circadian loop. M6A also acts as a regulator of mRNA stability: in embryonic stem cells (ESCs), m6A methylation of mRNAs encoding key naive pluripotency-promoting transcripts results in transcript destabilization.
Sequence similarities	Belongs to the MT-A70-like family.
Cellular localization	Nucleus.

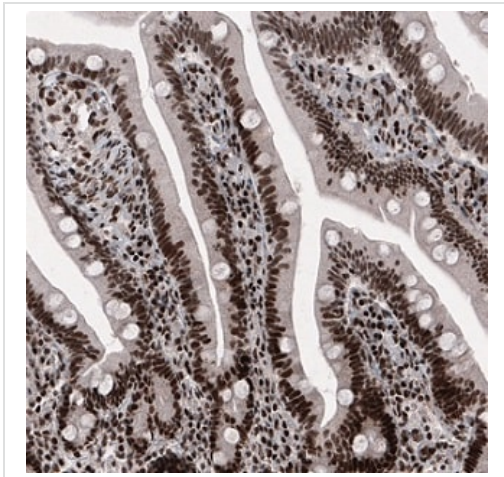
Images



Western blot - Anti-METTL14 antibody [CL4252]
(ab220030)

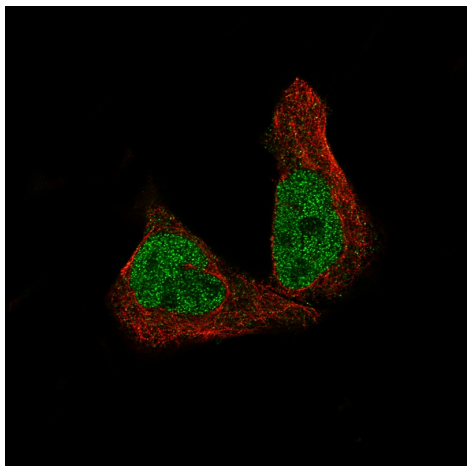
Anti-METTL14 antibody [CL4252] (ab220030) at 1/500 dilution +
A431 cell line lysate

Predicted band size: 52 kDa



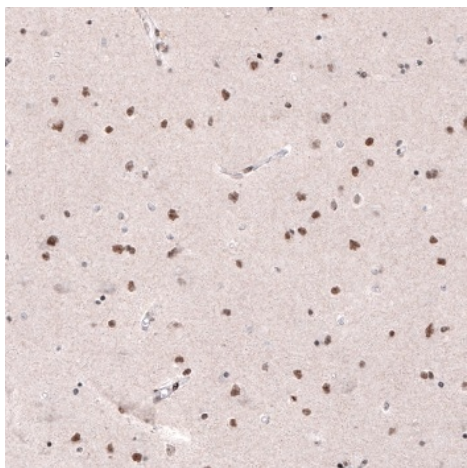
Immunohistochemistry (Formalin/PFA-fixed paraffin-
embedded sections) - Anti-METTL14 antibody
[CL4252] (ab220030)

Immunohistochemical analysis of formalin-fixed and paraffin-
embedded Human duodenum tissue labeling METTL14 with
ab220030 at 1/1000 dilution, showing strong nuclear positivity in
glandular cells and in the connective tissue.



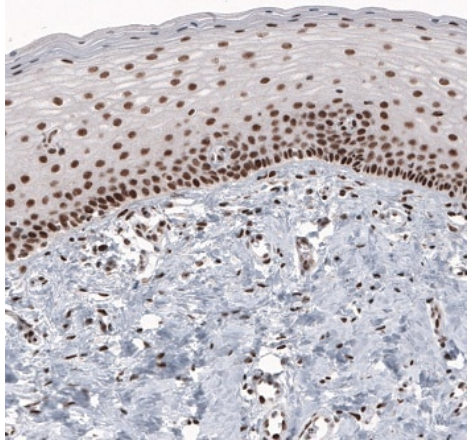
Immunocytochemistry/ Immunofluorescence - Anti-METTL14 antibody [CL4252] (ab220030)

Immunocytochemistry/ Immunofluorescence analysis of RH-30 cells labeling METTL14 with ab220030 at 2-10 $\mu\text{g}/\text{mL}$. Cells were fixed with PFA and permeabilised with Triton X-100. The data is showing specific staining in the nucleoplasm in green. Microtubule- and nuclear probes are visualized in red and blue, respectively (where available).



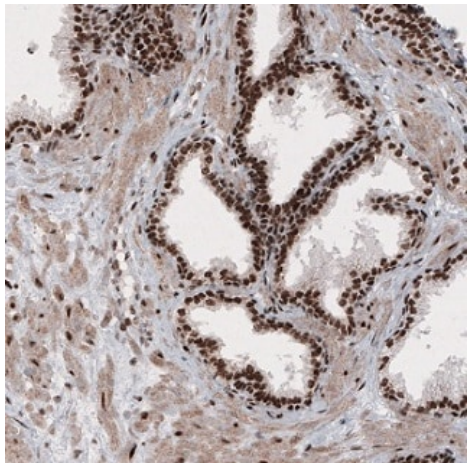
Immunohistochemistry (Formalin/PFA-fixed paraffin-embedded sections) - Anti-METTL14 antibody [CL4252] (ab220030)

Immunohistochemical analysis of formalin-fixed and paraffin-embedded Human cerebral cortex tissue labeling METTL14 with ab220030 at 1/1000 dilution, showing moderate nuclear positivity in neurons.



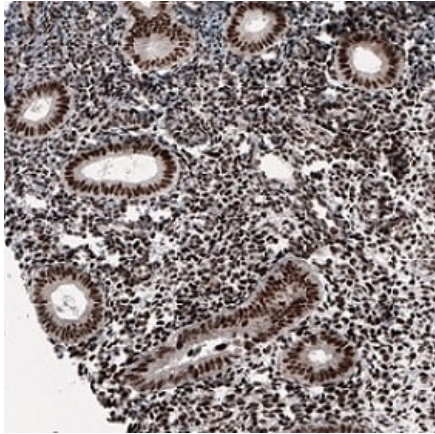
Immunohistochemical analysis of formalin-fixed and paraffin-embedded Human cervix tissue labeling METTL14 with ab220030 at 1/1000 dilution, showing strong nuclear positivity in squamous epithelium and connective tissue cells.

Immunohistochemistry (Formalin/PFA-fixed paraffin-embedded sections) - Anti-METTL14 antibody [CL4252] (ab220030)



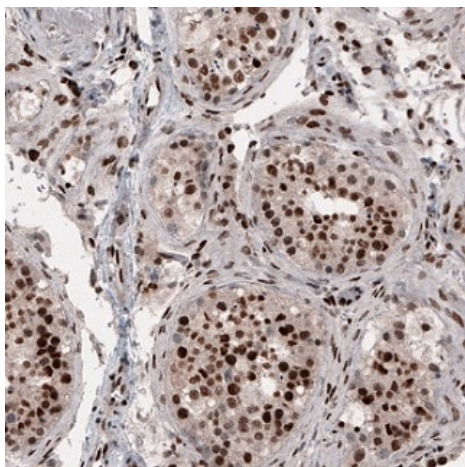
Immunohistochemical analysis of formalin-fixed and paraffin-embedded Human prostate tissue labeling METTL14 with ab220030 at 1/1000 dilution, showing strong nuclear positivity in glandular cells and in smooth muscle.

Immunohistochemistry (Formalin/PFA-fixed paraffin-embedded sections) - Anti-METTL14 antibody [CL4252] (ab220030)



Immunohistochemical analysis of formalin-fixed and paraffin-embedded Human endometrium tissue labeling METTL14 with ab220030 at 1/1000 dilution, showing strong nuclear immunoreactivity in glandular cells and in stroma.

Immunohistochemistry (Formalin/PFA-fixed paraffin-embedded sections) - Anti-METTL14 antibody [CL4252] (ab220030)



Immunohistochemical analysis of formalin-fixed and paraffin-embedded Human testis tissue labeling METTL14 with ab220030 at 1/1000 dilution, showing strong nuclear positivity in cells in seminiferous tubes.

Immunohistochemistry (Formalin/PFA-fixed paraffin-embedded sections) - Anti-METTL14 antibody [CL4252] (ab220030)

Please note: All products are "FOR RESEARCH USE ONLY. NOT FOR USE IN DIAGNOSTIC PROCEDURES"

Our Abpromise to you: Quality guaranteed and expert technical support

- Replacement or refund for products not performing as stated on the datasheet
- Valid for 12 months from date of delivery
- Response to your inquiry within 24 hours

- We provide support in Chinese, English, French, German, Japanese and Spanish
- Extensive multi-media technical resources to help you
- We investigate all quality concerns to ensure our products perform to the highest standards

If the product does not perform as described on this datasheet, we will offer a refund or replacement. For full details of the Abpromise, please visit <https://www.abcam.com/abpromise> or contact our technical team.

Terms and conditions

- Guarantee only valid for products bought direct from Abcam or one of our authorized distributors