




Product datasheet

Anti-METTL21A antibody ab84523

1 References 1 Image

Overview

Product name	Anti-METTL21A antibody
Description	Rabbit polyclonal to METTL21A
Host species	Rabbit
Tested applications	Suitable for: WB
Species reactivity	Reacts with: Human Predicted to work with: Mouse, Rat, Rabbit, Horse, Guinea pig, Cow, Cat, Dog, Pig 
Immunogen	Synthetic peptide corresponding to Human METTL21A aa 71-120 (internal sequence). Sequence: LGAGTGLVGIVAALLGAHVTTIDRQVALEFLKSNVQANL PPIQTKTVVK Database link: NP_660323  Run BLAST with  Run BLAST with
Positive control	Human Fetal Liver lysate
General notes	Previously labelled as FAM119A.

Properties

Form	Liquid
Storage instructions	Shipped at 4°C. Upon delivery aliquot and store at -20°C or -80°C. Avoid repeated freeze / thaw cycles.
Storage buffer	Preservative: 0.09% Sodium azide Constituents: 2% Sucrose, PBS
Purity	Immunogen affinity purified
Clonality	Polyclonal
Isotype	IgG

Applications

Our [Abpromise guarantee](#) covers the use of **ab84523** in the following tested applications.

The application notes include recommended starting dilutions; optimal dilutions/concentrations should be determined by the end user.

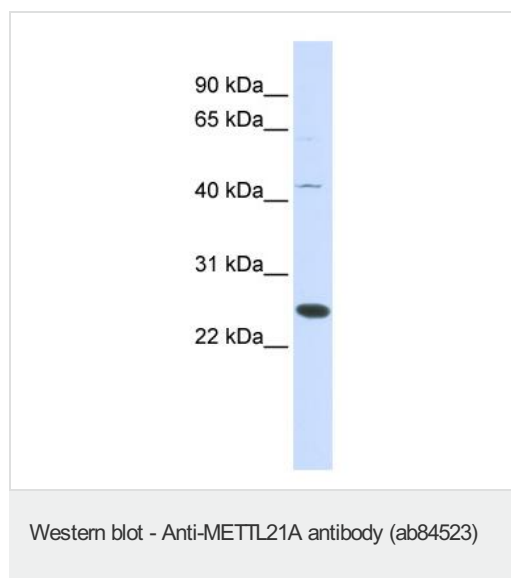
Application	Abreviews	Notes
WB		Use a concentration of 1 µg/ml. Predicted molecular weight: 25 kDa. Good results were obtained when blocked with 5% non-fat dry milk in 0.05% PBS-T.

Target

Sequence similarities Belongs to the FAM119 family.

Cellular localization Membrane.

Images



Anti-METTL21A antibody (ab84523) at 1 µg/ml + Human Fetal Liver lysate at 10 µg

Secondary

HRP conjugated anti-Rabbit IgG at 1: 50,000

Predicted band size: 25 kDa

Observed band size: 25 kDa

Additional bands at: 44 kDa. We are unsure as to the identity of these extra bands.

Please note: All products are "FOR RESEARCH USE ONLY. NOT FOR USE IN DIAGNOSTIC PROCEDURES"

Our Abpromise to you: Quality guaranteed and expert technical support

- Replacement or refund for products not performing as stated on the datasheet
- Valid for 12 months from date of delivery
- Response to your inquiry within 24 hours
- We provide support in Chinese, English, French, German, Japanese and Spanish
- Extensive multi-media technical resources to help you
- We investigate all quality concerns to ensure our products perform to the highest standards

If the product does not perform as described on this datasheet, we will offer a refund or replacement. For full details of the Abpromise, please visit <https://www.abcam.com/abpromise> or contact our technical team.

Terms and conditions

- Guarantee only valid for products bought direct from Abcam or one of our authorized distributors