


Product datasheet

Anti-MFSD2A/NLS1 antibody ab217970

3 Images

Overview

Product name	Anti-MFSD2A/NLS1 antibody
Description	Rabbit polyclonal to MFSD2A/NLS1
Host species	Rabbit
Tested applications	Suitable for: IHC-P
Species reactivity	Reacts with: Human Predicted to work with: Mouse, Rat 
Immunogen	Synthetic peptide within Human MFSD2A/NLS1 aa 345-395 conjugated to keyhole limpet haemocyanin. The exact sequence is proprietary. Database link: Q8NA29
Positive control	Human placenta, Human larynx and Human liver carcinoma tissues.
General notes	This product was previously labelled as MFSD2A

Properties

Form	Liquid
Storage instructions	Shipped at 4°C. Store at +4°C short term (1-2 weeks). Upon delivery aliquot. Store at -20°C long term. Avoid freeze / thaw cycle.
Storage buffer	Preservative: 0.09% Sodium azide Constituents: 1% BSA, 50% Glycerol Aqueous buffered solution
Purity	Protein A purified
Clonality	Polyclonal
Isotype	IgG

Applications

Our [Abpromise guarantee](#) covers the use of **ab217970** in the following tested applications.

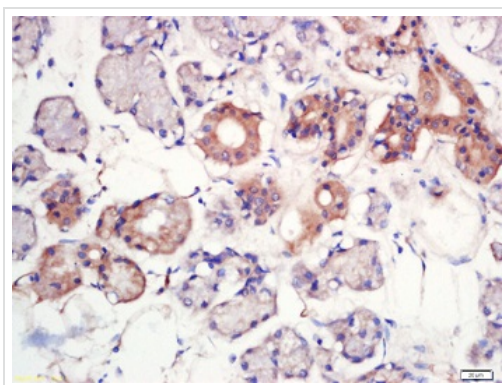
The application notes include recommended starting dilutions; optimal dilutions/concentrations should be determined by the end user.

Application	Abreviews	Notes
IHC-P		1/100 - 1/500. Perform heat mediated antigen retrieval with citrate buffer pH 6 before commencing with IHC staining protocol.

Target

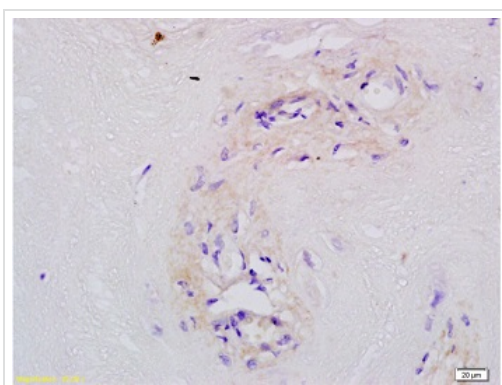
Function	Play a role in thermogenesis via beta-adrenergic signaling pathway.
Sequence similarities	Belongs to the major facilitator superfamily.
Cellular localization	Endoplasmic reticulum membrane.

Images



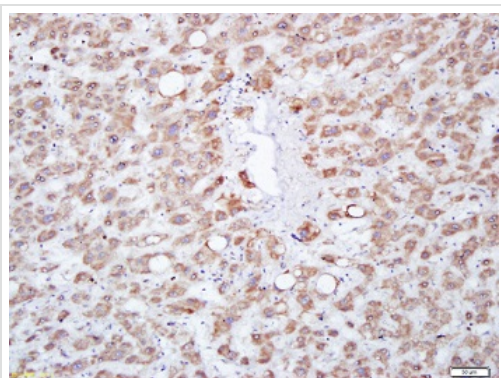
Immunohistochemical analysis of formalin-fixed and paraffin-embedded Human larynx tissue labeling MFSD2A/NLS1 with ab217970 at 1/200 dilution, followed by conjugation to the secondary antibody and DAB staining.

Immunohistochemistry (Formalin/PFA-fixed paraffin-embedded sections) - Anti-MFSD2A/NLS1 antibody (ab217970)



Immunohistochemical analysis of formalin-fixed and paraffin-embedded Human placenta tissue labeling MFSD2A/NLS1 with ab217970 at 1/200 dilution, followed by conjugation to the secondary antibody and DAB staining.

Immunohistochemistry (Formalin/PFA-fixed paraffin-embedded sections) - Anti-MFSD2A/NLS1 antibody (ab217970)



Immunohistochemical analysis of paraformaldehyde-fixed and paraffin-embedded Human liver carcinoma tissue labeling MFSD2A/NLS1 with ab217970 at 1/200 dilution, followed by conjugation to the secondary antibody and DAB staining.

Immunohistochemistry (Formalin/PFA-fixed paraffin-embedded sections) - Anti-MFSD2A/NLS1 antibody (ab217970)

Please note: All products are "FOR RESEARCH USE ONLY. NOT FOR USE IN DIAGNOSTIC PROCEDURES"

Our Abpromise to you: Quality guaranteed and expert technical support

- Replacement or refund for products not performing as stated on the datasheet
- Valid for 12 months from date of delivery
- Response to your inquiry within 24 hours
- We provide support in Chinese, English, French, German, Japanese and Spanish
- Extensive multi-media technical resources to help you
- We investigate all quality concerns to ensure our products perform to the highest standards

If the product does not perform as described on this datasheet, we will offer a refund or replacement. For full details of the Abpromise, please visit <https://www.abcam.com/abpromise> or contact our technical team.

Terms and conditions

- Guarantee only valid for products bought direct from Abcam or one of our authorized distributors