

Product datasheet

Anti-mGluR1 antibody ab82211

★★★★★ 14 Abreviews 7 References 2 Images

Overview

Product name	Anti-mGluR1 antibody
Description	Rabbit polyclonal to mGluR1
Host species	Rabbit
Tested applications	Suitable for: WB, ICC/IF
Species reactivity	Reacts with: Rat, Human
Immunogen	<p>Synthetic peptide corresponding to Human mGluR1 aa 1159-1171. Sequence:</p> <p>SSVPSSPVSESVL</p> <p>Database link: Q13255</p> <p style="text-align: right;"> Run BLAST with Run BLAST with </p>
Positive control	WB: Human brain lysate. ICC/IF: Rat brain (cingulate cortex).
General notes	<p>This product was previously labelled as Metabotropic Glutamate Receptor 1, Metabotropic Glutamate Receptor 1a.</p> <p>Reproducibility is key to advancing scientific discovery and accelerating scientists' next breakthrough.</p> <p>Abcam is leading the way with our range of recombinant antibodies, knockout-validated antibodies and knockout cell lines, all of which support improved reproducibility.</p> <p>We are also planning to innovate the way in which we present recommended applications and species on our product datasheets, so that only applications & species that have been tested in our own labs, our suppliers or by selected trusted collaborators are covered by our Abpromise™ guarantee.</p> <p>In preparation for this, we have started to update the applications & species that this product is Abpromise guaranteed for.</p> <p>We are also updating the applications & species that this product has been "predicted to work with," however this information is not covered by our Abpromise guarantee.</p> <p>Applications & species from publications and Abreviews that have not been tested in our own labs or in those of our suppliers are not covered by the Abpromise guarantee.</p> <p>Please check that this product meets your needs before purchasing. If you have any questions, special requirements or concerns, please send us an inquiry and/or contact our Support team ahead of purchase. Recommended alternatives for this product can be found below, as well as</p>

customer reviews and Q&As.

Properties

Form	Liquid
Storage instructions	Shipped at 4°C. Upon delivery aliquot and store at -20°C. Avoid freeze / thaw cycles.
Storage buffer	Preservative: 0.02% Sodium azide Constituent: PBS
Purity	Immunogen affinity purified
Clonality	Polyclonal
Isotype	IgG

Applications

Our [Abpromise guarantee](#) covers the use of **ab82211** in the following tested applications.

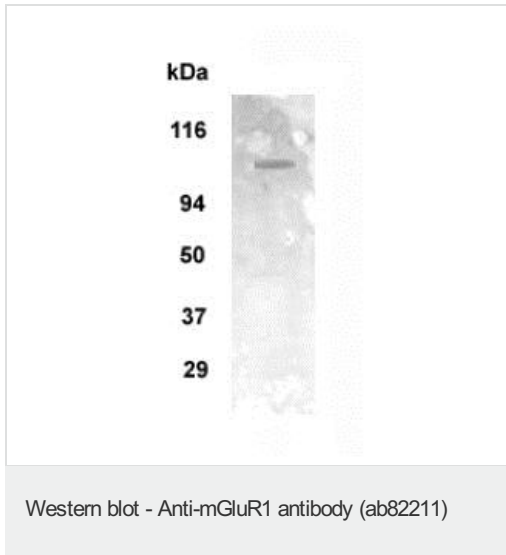
The application notes include recommended starting dilutions; optimal dilutions/concentrations should be determined by the end user.

Application	Abreviews	Notes
WB		1/500 - 1/1000. Detects a band of approximately 110 kDa (predicted molecular weight: 133 kDa).
ICC/IF		1/100 - 1/500.

Target

Function	Receptor for glutamate. The activity of this receptor is mediated by a G-protein that activates a phosphatidylinositol-calcium second messenger system. May participate in the central action of glutamate in the CNS, such as long-term potentiation in the hippocampus and long-term depression in the cerebellum.
Sequence similarities	Belongs to the G-protein coupled receptor 3 family.
Cellular localization	Cell membrane.

Images



Anti-mGluR1 antibody (ab82211) at 1/1000 dilution + human brain lysate at 20 μ g

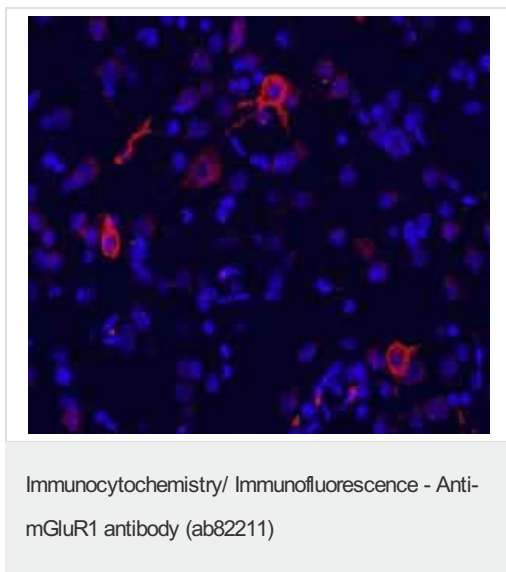
Secondary

AP-conjugated secondary at 1/5000 dilution

Predicted band size: 133 kDa

Observed band size: 110 kDa

[why is the actual band size different from the predicted?](#)



Immunofluorescence labeling of mGluR1 in rat brain (cingulate cortex). Using ab82211 (red color). DAPI was used to counter-stain cell nuclei (blue color). Working dilution is 1/100-1/500.

Please note: All products are "FOR RESEARCH USE ONLY. NOT FOR USE IN DIAGNOSTIC PROCEDURES"

Our Abpromise to you: Quality guaranteed and expert technical support

- Replacement or refund for products not performing as stated on the datasheet
- Valid for 12 months from date of delivery
- Response to your inquiry within 24 hours

- We provide support in Chinese, English, French, German, Japanese and Spanish
- Extensive multi-media technical resources to help you
- We investigate all quality concerns to ensure our products perform to the highest standards

If the product does not perform as described on this datasheet, we will offer a refund or replacement. For full details of the Abpromise, please visit <https://www.abcam.com/abpromise> or contact our technical team.

Terms and conditions

- Guarantee only valid for products bought direct from Abcam or one of our authorized distributors