




Product datasheet

Anti-MGLUR8 antibody [4C1C1] ab233791

1 References 4 Images

Overview

Product name	Anti-MGLUR8 antibody [4C1C1]
Description	Mouse monoclonal [4C1C1] to MGLUR8
Host species	Mouse
Tested applications	Suitable for: WB, Flow Cyt
Species reactivity	Reacts with: Rat, Human Predicted to work with: Mouse 
Immunogen	<p>Recombinant fragment corresponding to Human MGLUR8 aa 440-583. (Expressed in E.coli). Sequence:</p> <p>KELLYIRAVNFNGSAGTPVTFNENGDAPGRYDIFQYQITN KSTEYKVG HWTNQLHLKVEDMQWAHREHHPASVCSLPCKPGERKK TVKGVPCWHCE RCEGYNYQVDELSCELCPLDQRPNMNRGTCQLPIIKLEW HSPW</p> <p>Database link: O00222</p> <p style="text-align: right;"> Run BLAST with  Run BLAST with</p>
Positive control	WB: C6 cell lysate; MGLUR8 (aa 440-583)-hlgGf c transfected HEK-293 cell lysate; Human MGLUR8 (aa 440-583) recombinant protein. Flow Cyt: SK-N-SH cells.
General notes	<p>Reproducibility is key to advancing scientific discovery and accelerating scientists' next breakthrough.</p> <p>Abcam is leading the way with our range of recombinant antibodies, knockout-validated antibodies and knockout cell lines, all of which support improved reproducibility.</p> <p>We are also planning to innovate the way in which we present recommended applications and species on our product datasheets, so that only applications & species that have been tested in our own labs, our suppliers or by selected trusted collaborators are covered by our Abpromise™ guarantee.</p> <p>In preparation for this, we have started to update the applications & species that this product is Abpromise guaranteed for.</p> <p>We are also updating the applications & species that this product has been “predicted to work with,” however this information is not covered by our Abpromise guarantee.</p> <p>Applications & species from publications and Abreviews that have not been tested in our own</p>

labs or in those of our suppliers are not covered by the Abpromise guarantee.

Please check that this product meets your needs before purchasing. If you have any questions, special requirements or concerns, please send us an inquiry and/or contact our Support team ahead of purchase. Recommended alternatives for this product can be found below, as well as customer reviews and Q&As.

Properties

Form	Liquid
Storage instructions	Shipped at 4°C. Store at +4°C short term (1-2 weeks). Upon delivery aliquot. Store at -20°C long term. Avoid freeze / thaw cycle.
Storage buffer	Preservative: 0.05% Sodium azide Constituent: PBS
Purity	Protein G purified
Purification notes	Purified from tissue culture supernatant.
Clonality	Monoclonal
Clone number	4C1C1
Isotype	IgG1

Applications

Our [Abpromise guarantee](#) covers the use of **ab233791** in the following tested applications.

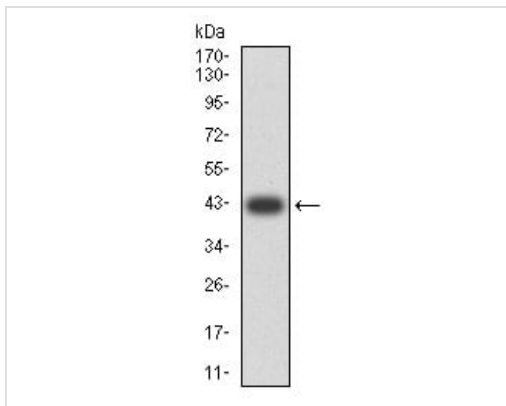
The application notes include recommended starting dilutions; optimal dilutions/concentrations should be determined by the end user.

Application	Abreviews	Notes
WB		1/500 - 1/2000. Predicted molecular weight: 102 kDa.
Flow Cyt		1/200 - 1/400.

Target

Function	Receptor for glutamate. The activity of this receptor is mediated by a G-protein that inhibits adenylate cyclase activity.
Sequence similarities	Belongs to the G-protein coupled receptor 3 family.
Cellular localization	Cell membrane.

Images

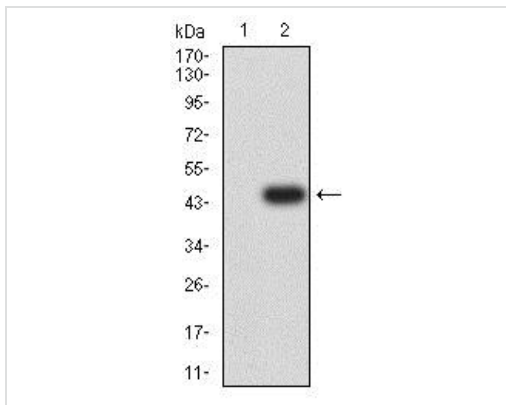


Western blot - Anti-MGLUR8 antibody [4C1C1] (ab233791)

Anti-MGLUR8 antibody [4C1C1] (ab233791) at 1/500 dilution + Human MGLUR8 (aa 440-583) recombinant protein

Predicted band size: 102 kDa

Expected MW is 42.6 kDa.



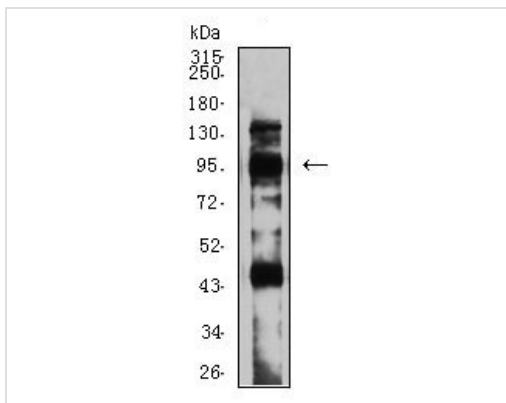
Western blot - Anti-MGLUR8 antibody [4C1C1] (ab233791)

All lanes : Anti-MGLUR8 antibody [4C1C1] (ab233791) at 1/500 dilution

Lane 1 : HEK-293 (human epithelial cell line from embryonic kidney) cell lysate

Lane 2 : MGLUR8 (aa 440-583)-hlgGfC transfected HEK-293 cell lysate

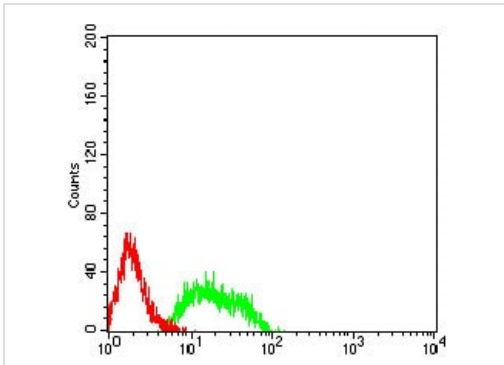
Predicted band size: 102 kDa



Western blot - Anti-MGLUR8 antibody [4C1C1] (ab233791)

Anti-MGLUR8 antibody [4C1C1] (ab233791) at 1/500 dilution + C6 (rat glial tumor cell line) cell lysate

Predicted band size: 102 kDa



Flow Cytometry - Anti-MGLUR8 antibody [4C1C1]
(ab233791)

Flow cytometric analysis of SK-N-SH (human neuroblastoma cell line) cells labeling MGLUR8 with ab233791 at 1/200 dilution (green) compared with a negative control (red).

Please note: All products are "FOR RESEARCH USE ONLY. NOT FOR USE IN DIAGNOSTIC PROCEDURES"

Our Abpromise to you: Quality guaranteed and expert technical support

- Replacement or refund for products not performing as stated on the datasheet
- Valid for 12 months from date of delivery
- Response to your inquiry within 24 hours
- We provide support in Chinese, English, French, German, Japanese and Spanish
- Extensive multi-media technical resources to help you
- We investigate all quality concerns to ensure our products perform to the highest standards

If the product does not perform as described on this datasheet, we will offer a refund or replacement. For full details of the Abpromise, please visit <https://www.abcam.com/abpromise> or contact our technical team.

Terms and conditions

- Guarantee only valid for products bought direct from Abcam or one of our authorized distributors