


Product datasheet

Anti-Migfilin antibody ab154417

2 Images

Overview

Product name	Anti-Migfilin antibody
Description	Rabbit polyclonal to Migfilin
Host species	Rabbit
Tested applications	Suitable for: WB, IHC-P
Species reactivity	Reacts with: Human Predicted to work with: Mouse, Cow 
Immunogen	Recombinant fragment corresponding to Human Migfilin aa 171-373.
Positive control	HCT116 whole cell lysate; Human MDAMB231 xenograft tissue.
General notes	Previously labelled as FBLIM1.

Properties

Form	Liquid
Storage instructions	Shipped at 4°C. Upon delivery aliquot. Store at -20°C or -80°C. Avoid freeze / thaw cycle.
Storage buffer	pH: 7.00 Preservative: 0.01% Thimerosal (merthiolate) Constituents: 1.21% Tris, 0.75% Glycine, 20% Glycerol
Purity	Immunogen affinity purified
Clonality	Polyclonal
Isotype	IgG

Applications

Our [Abpromise guarantee](#) covers the use of **ab154417** in the following tested applications.

The application notes include recommended starting dilutions; optimal dilutions/concentrations should be determined by the end user.

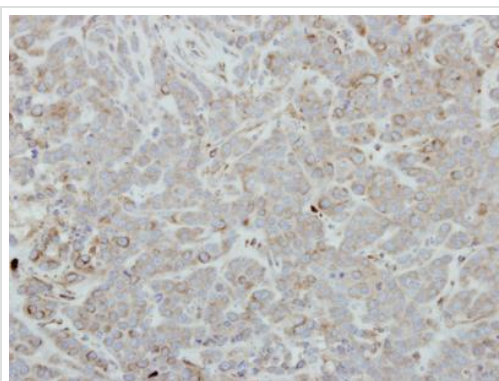
Application	Abreviews	Notes
WB		1/500 - 1/3000. Predicted molecular weight: 41 kDa.

Application	Abreviews	Notes
IHC-P		1/100 - 1/1000. Perform heat mediated antigen retrieval before commencing with IHC staining protocol using 10mM Citrate buffer (pH6.0) or Tris-EDTA buffer (pH8.0).

Target

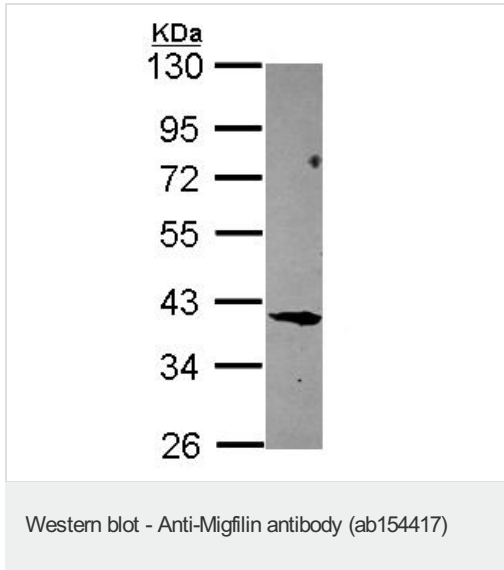
Function	Serves as an anchoring site for cell-ECM adhesion proteins and filamin-containing actin filaments. Is implicated in cell shape modulation (spreading) and motility. May participate in the regulation of filamin-mediated cross-linking and stabilization of actin filaments. May also regulate the assembly of filamin-containing signaling complexes that control actin assembly.
Tissue specificity	Isoform 1 and isoform 3 are expressed in heart, kidney, lung, pancreas, placenta and platelets. Isoform 2 is expressed in brain, heart, kidney, lung, pancreas, placenta, skeletal muscle and platelets.
Sequence similarities	Contains 3 LIM zinc-binding domains.
Cellular localization	Cytoplasm > cell cortex. Cell junction > focal adhesion. Cytoplasm > cytoskeleton. Associated with actin stress fiber at cell-ECM focal adhesion sites. Isoform 1 and isoform 3 are recruited and localized at actin stress fibers and clustered at cell-EMC adhesion sites through interaction with PLEKHC1. Isoform 2 is localized at actin stress fibers.

Images



Immunohistochemical analysis of paraffin-embedded MDAMB231 xenograft labeling Migfilin with ab154417 at 1/250 dilution.

Immunohistochemistry (Formalin/PFA-fixed paraffin-embedded sections) - Anti-Migfilin antibody (ab154417)



Anti-Migfilin antibody (ab154417) at 1/1000 dilution + HCT116 whole cell lysate at 30 µg

Predicted band size: 41 kDa

10% SDS PAGE

Please note: All products are "FOR RESEARCH USE ONLY. NOT FOR USE IN DIAGNOSTIC PROCEDURES"

Our Abpromise to you: Quality guaranteed and expert technical support

- Replacement or refund for products not performing as stated on the datasheet
- Valid for 12 months from date of delivery
- Response to your inquiry within 24 hours
- We provide support in Chinese, English, French, German, Japanese and Spanish
- Extensive multi-media technical resources to help you
- We investigate all quality concerns to ensure our products perform to the highest standards

If the product does not perform as described on this datasheet, we will offer a refund or replacement. For full details of the Abpromise, please visit <https://www.abcam.com/abpromise> or contact our technical team.

Terms and conditions

- Guarantee only valid for products bought direct from Abcam or one of our authorized distributors