




Product datasheet

Anti-MINPP1 antibody ab224473

2 Images

Overview

<b>Product name</b>	Anti-MINPP1 antibody
<b>Description</b>	Rabbit polyclonal to MINPP1
<b>Host species</b>	Rabbit
<b>Tested applications</b>	<b>Suitable for:</b> IHC-P, WB
<b>Species reactivity</b>	<b>Reacts with:</b> Human <b>Predicted to work with:</b> Orangutan 
<b>Immunogen</b>	Recombinant fragment corresponding to Human MINPP1 aa 83-206. Sequence: LVALIRHGTRYPTVKQIRKLRQLHGLLQARGSRDGGAS STGSRDLGAALA DWPLWYADWMDGQLVEKGRQDMRQLALRLASLFPA LFSRENYGRLRLITS SKHRCMDSSAAFLQGLWQHYPGL  Database link: <a href="#">Q9UNW1</a>   <a href="#">Run BLAST with</a>  <a href="#">Run BLAST with</a>
<b>Positive control</b>	WB: RT4 cell lysate. IHC-P: Human pancreas tissue.

Properties

<b>Form</b>	Liquid
<b>Storage instructions</b>	Shipped at 4°C. Store at +4°C short term (1-2 weeks). Upon delivery aliquot. Store at -20°C long term. Avoid freeze / thaw cycle.
<b>Storage buffer</b>	pH: 7.20 Preservative: 0.02% Sodium azide Constituents: 40% Glycerol, PBS
<b>Purity</b>	Immunogen affinity purified
<b>Clonality</b>	Polyclonal
<b>Isotype</b>	IgG

Applications

## Applications

Our [Abpromise guarantee](#) covers the use of **ab224473** in the following tested applications.

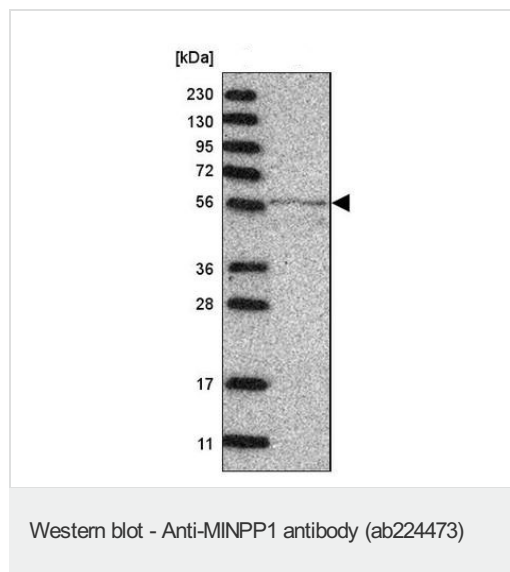
The application notes include recommended starting dilutions; optimal dilutions/concentrations should be determined by the end user.

Application	Abreviews	Notes
IHC-P		1/50 - 1/200. Perform heat mediated antigen retrieval with citrate buffer pH 6 before commencing with IHC staining protocol.
WB		1/100 - 1/250. Predicted molecular weight: 55 kDa.

## Target

<b>Function</b>	Acts as a phosphoinositide 5- and phosphoinositide 6-phosphatase and regulates cellular levels of inositol pentakisphosphate (InsP5) and inositol hexakisphosphate (InsP6) (By similarity). May play a role in bone development (endochondral ossification).
<b>Tissue specificity</b>	Widely expressed with highest levels in kidney, liver and placenta.
<b>Involvement in disease</b>	Note=Defects in MINPP1 may be involved in follicular thyroid tumors development.
<b>Cellular localization</b>	Endoplasmic reticulum lumen.

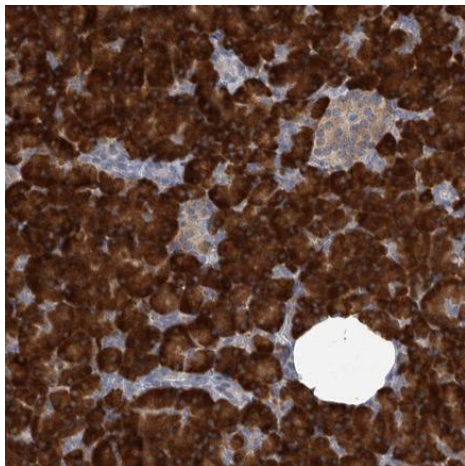
## Images



Anti-MINPP1 antibody (ab224473) at 1/100 dilution + RT4 (human urinary bladder cancer cell line) cell lysate

Developed using the ECL technique.

**Predicted band size:** 55 kDa



Paraffin-embedded human pancreas tissue stained for MINPP1 with ab224473 at 1/50 dilution in immunohistochemical analysis.

Immunohistochemistry (Formalin/PFA-fixed paraffin-embedded sections) - Anti-MINPP1 antibody (ab224473)

**Please note:** All products are "FOR RESEARCH USE ONLY. NOT FOR USE IN DIAGNOSTIC PROCEDURES"

### Our Abpromise to you: Quality guaranteed and expert technical support

---

- Replacement or refund for products not performing as stated on the datasheet
- Valid for 12 months from date of delivery
- Response to your inquiry within 24 hours
- We provide support in Chinese, English, French, German, Japanese and Spanish
- Extensive multi-media technical resources to help you
- We investigate all quality concerns to ensure our products perform to the highest standards

If the product does not perform as described on this datasheet, we will offer a refund or replacement. For full details of the Abpromise, please visit <https://www.abcam.com/abpromise> or contact our technical team.

### Terms and conditions

---

- Guarantee only valid for products bought direct from Abcam or one of our authorized distributors