




Product datasheet

Anti-MIRO1 antibody [CL1095] ab223750

7 Images

Overview

Product name	Anti-MIRO1 antibody [CL1095]
Description	Mouse monoclonal [CL1095] to MIRO1
Host species	Mouse
Tested applications	Suitable for: IHC-P
Species reactivity	Reacts with: Human Predicted to work with: Mouse, Chicken, Cow 
Immunogen	Recombinant fragment corresponding to Human MIRO1 aa 53-142. Sequence: THVDYSEAEQSDEQLHQEISQANVICIVAVNNKHSIDK VTSRWIPLIN ERTDKDSRLPLILVGNKSDLVEYSSMETILPIMNQYTEIE Database link: Q8IXI2  Run BLAST with  Run BLAST with
Epitope	Binds to an epitope located within the peptide sequence ERTDKDSRLP as determined by overlapping synthetic peptides.
Positive control	IHC-P: Human cerebral cortex, cerebellum, kidney, small intestine and testis tissues; Human liver cancer and colorectal cancer tissues.

Properties

Form	Liquid
Storage instructions	Shipped at 4°C. Store at +4°C short term (1-2 weeks). Upon delivery aliquot. Store at -20°C long term. Avoid freeze / thaw cycle.
Storage buffer	pH: 7.2 Preservative: 0.02% Sodium azide Constituents: 40% Glycerol, PBS
Purity	Protein A purified
Clonality	Monoclonal
Clone number	CL1095
Isotype	IgG1

Applications

Our [Abpromise guarantee](#) covers the use of **ab223750** in the following tested applications.

The application notes include recommended starting dilutions; optimal dilutions/concentrations should be determined by the end user.

Application	Abreviews	Notes
IHC-P		1/200 - 1/500. Perform heat mediated antigen retrieval with citrate buffer pH 6 before commencing with IHC staining protocol.

Target

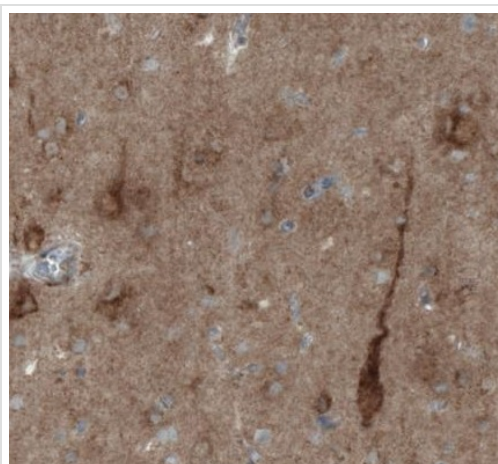
Function Mitochondrial GTPase involved in mitochondrial trafficking. Probably involved in control of anterograde transport of mitochondria and their subcellular distribution.

Tissue specificity Ubiquitously expressed. Expressed at high level in heart and skeletal muscle.

Sequence similarities Belongs to the mitochondrial Rho GTPase family.
Contains 2 EF-hand domains.
Contains 2 Miro domains.

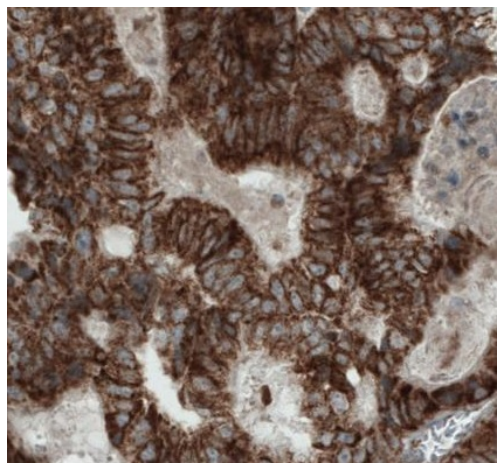
Cellular localization Mitochondrion outer membrane. Colocalizes with MGARP and RHOT2 at the mitochondria.

Images



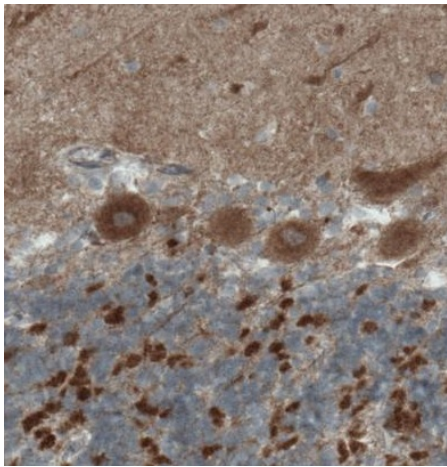
Paraffin-embedded human cerebral cortex tissue stained for MIRO1 using ab223750 at 1/200 dilution in immunohistochemical analysis.

Immunohistochemistry (Formalin/PFA-fixed paraffin-embedded sections) - Anti-MIRO1 antibody [CL1095] (ab223750)



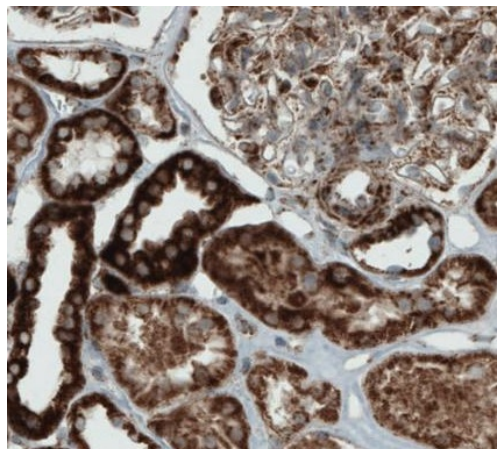
Immunohistochemistry (Formalin/PFA-fixed paraffin-embedded sections) - Anti-MIRO1 antibody
[CL1095] (ab223750)

Paraffin-embedded human colorectal cancer tissue stained for MIRO1 using ab223750 at 1/200 dilution in immunohistochemical analysis.



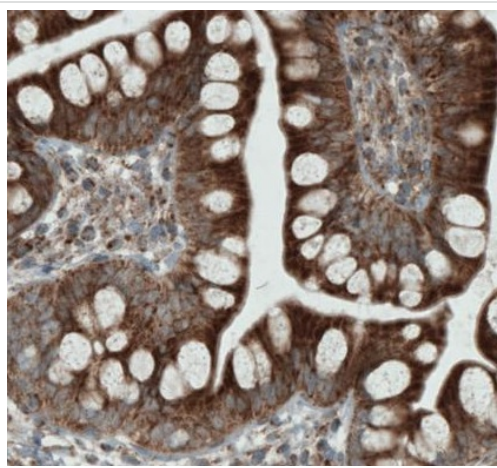
Immunohistochemistry (Formalin/PFA-fixed paraffin-embedded sections) - Anti-MIRO1 antibody
[CL1095] (ab223750)

Paraffin-embedded human cerebellum tissue stained for MIRO1 using ab223750 at 1/200 dilution in immunohistochemical analysis.



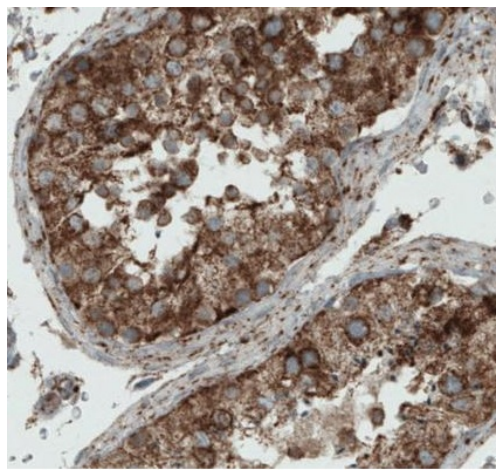
Paraffin-embedded human kidney tissue stained for MIRO1 using ab223750 at 1/200 dilution in immunohistochemical analysis.

Immunohistochemistry (Formalin/PFA-fixed paraffin-embedded sections) - Anti-MIRO1 antibody
[CL1095] (ab223750)



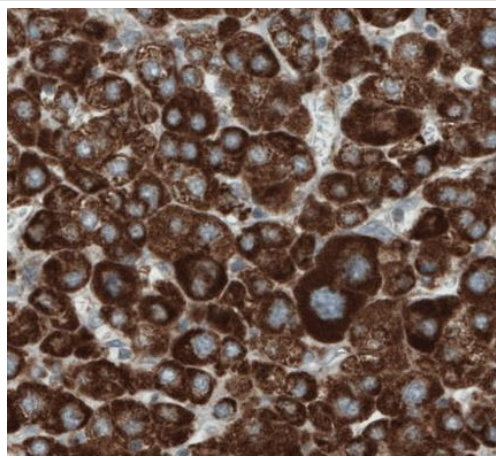
Paraffin-embedded human small intestine tissue stained for MIRO1 using ab223750 at 1/200 dilution in immunohistochemical analysis.

Immunohistochemistry (Formalin/PFA-fixed paraffin-embedded sections) - Anti-MIRO1 antibody
[CL1095] (ab223750)



Paraffin-embedded human testis tissue stained for MIRO1 using ab223750 at 1/200 dilution in immunohistochemical analysis.

Immunohistochemistry (Formalin/PFA-fixed paraffin-embedded sections) - Anti-MIRO1 antibody [CL1095] (ab223750)



Paraffin-embedded human liver cancer tissue stained for MIRO1 using ab223750 at 1/200 dilution in immunohistochemical analysis.

Immunohistochemistry (Formalin/PFA-fixed paraffin-embedded sections) - Anti-MIRO1 antibody [CL1095] (ab223750)

Please note: All products are "FOR RESEARCH USE ONLY. NOT FOR USE IN DIAGNOSTIC PROCEDURES"

Our Abpromise to you: Quality guaranteed and expert technical support

- Replacement or refund for products not performing as stated on the datasheet
- Valid for 12 months from date of delivery
- Response to your inquiry within 24 hours

- We provide support in Chinese, English, French, German, Japanese and Spanish
- Extensive multi-media technical resources to help you
- We investigate all quality concerns to ensure our products perform to the highest standards

If the product does not perform as described on this datasheet, we will offer a refund or replacement. For full details of the Abpromise, please visit <https://www.abcam.com/abpromise> or contact our technical team.

Terms and conditions

- Guarantee only valid for products bought direct from Abcam or one of our authorized distributors