

Product datasheet

Anti-MKK7 antibody [EP1455Y] - BSA and Azide free
ab239843

KO VALIDATED Recombinant RabMAb

3 Images

Overview

Product name	Anti-MKK7 antibody [EP1455Y] - BSA and Azide free
Description	Rabbit monoclonal [EP1455Y] to MKK7 - BSA and Azide free
Host species	Rabbit
Tested applications	Suitable for: Flow Cyt, IHC-P, WB
Species reactivity	Reacts with: Mouse, Rat, Human
Immunogen	Synthetic peptide within Human MKK7 aa 400-500 (C terminal). The exact sequence is proprietary.
Positive control	Flow Cyt: MCF7 cells.
General notes	ab239843 is the carrier-free version of ab52618 This format is designed for use in antibody labeling, including fluorochromes, metal isotopes, oligonucleotides, enzymes.

Our [carrier-free formats](#) are supplied in a buffer free of BSA, sodium azide and glycerol for higher conjugation efficiency.

Use our [conjugation kits](#) for antibody conjugates that are ready-to-use in as little as 20 minutes with <1 minute hands-on-time and 100% antibody recovery: available for fluorescent dyes, HRP, biotin and gold.

Ab239843 is compatible with the Maxpar® Antibody Labeling Kit from Fluidigm.

Maxpar® is a trademark of Fluidigm Canada Inc.

This product was previously labelled as MEK7

This product is a recombinant monoclonal antibody, which offers several advantages including:

- High batch-to-batch consistency and reproducibility
- Improved sensitivity and specificity
- Long-term security of supply
- Animal-free production

For more information [see here](#).

Our RabMAb® technology is a patented hybridoma-based technology for making rabbit monoclonal antibodies. For details on our patents, please refer to [RabMAb® patents](#).

Reproducibility is key to advancing scientific discovery and accelerating scientists' next

breakthrough.

Abcam is leading the way with our range of recombinant antibodies, knockout-validated antibodies and knockout cell lines, all of which support improved reproducibility.

We are also planning to innovate the way in which we present recommended applications and species on our product datasheets, so that only applications & species that have been tested in our own labs, our suppliers or by selected trusted collaborators are covered by our Abpromise™ guarantee.

In preparation for this, we have started to update the applications & species that this product is Abpromise guaranteed for.

We are also updating the applications & species that this product has been “predicted to work with,” however this information is not covered by our Abpromise guarantee.

Applications & species from publications and Abreviews that have not been tested in our own labs or in those of our suppliers are not covered by the Abpromise guarantee.

Please check that this product meets your needs before purchasing. If you have any questions, special requirements or concerns, please send us an inquiry and/or contact our Support team ahead of purchase. Recommended alternatives for this product can be found below, as well as customer reviews and Q&As.

Properties

Form	Liquid
Storage instructions	Shipped at 4°C. Store at +4°C. Do Not Freeze.
Storage buffer	pH: 7.2 Constituent: PBS
Carrier free	Yes
Purity	Protein A purified
Clonality	Monoclonal
Clone number	EP1455Y
Isotype	IgG

Applications

Our [Abpromise guarantee](#) covers the use of **ab239843** in the following tested applications.

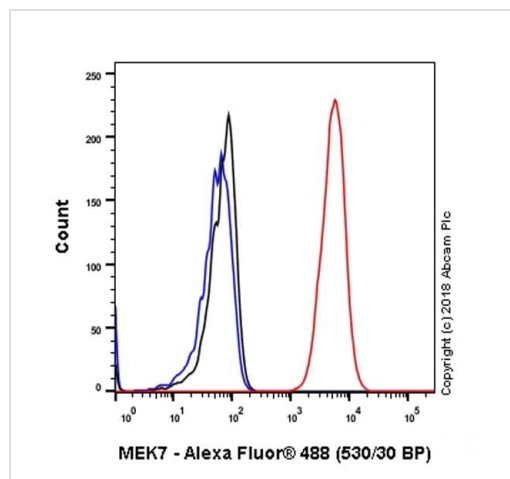
The application notes include recommended starting dilutions; optimal dilutions/concentrations should be determined by the end user.

Application	Abreviews	Notes
Flow Cyt		Use at an assay dependent concentration. ab199376 - Rabbit monoclonal IgG, is suitable for use as an isotype control with this antibody.
IHC-P		Use at an assay dependent concentration. Perform heat mediated antigen retrieval with citrate buffer pH 6 before commencing with IHC staining protocol.
WB		Use at an assay dependent concentration. Predicted molecular weight: 47 kDa.

Target

Function	Stress activated, dual specificity kinase that activates the JUN kinases MAPK8/JNK1, MAPK9/JNK2 and MAPK10/JNK3.
Tissue specificity	Ubiquitous; with highest level of expression in skeletal muscle. Isoform 3 is found at low levels in placenta, fetal liver, and skeletal muscle.
Sequence similarities	Belongs to the protein kinase superfamily. STE Ser/Thr protein kinase family. MAP kinase kinase subfamily. Contains 1 protein kinase domain.
Post-translational modifications	Activated by phosphorylation on Ser/Thr.
Cellular localization	Nucleus. Cytoplasm.

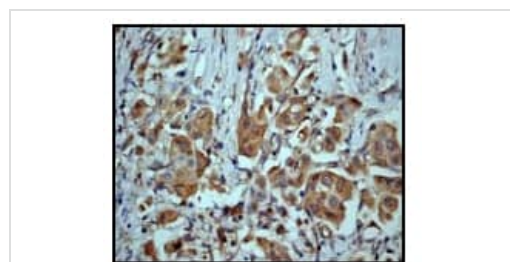
Images



Flow Cytometry - Anti-MKK7 antibody [EP1455Y] - BSA and Azide free (ab239843)

Flow Cytometry analysis of MCF7 (Human breast adenocarcinoma epithelial cell) cells labeling MKK7 with [ab52618](#) at 1/100 dilution (1 µg) (Red). Goat anti rabbit IgG (Alexa Fluor® 488, [ab150077](#)) at 1/2000 dilution was used as the secondary antibody. Cells were fixed with 4% paraformaldehyde. Rabbit monoclonal IgG ([ab172730](#)) was used as isotype control (Black). Unlabelled control: Cells without incubation with primary antibody and secondary antibody (Blue).

This data was developed using the same antibody clone in a different buffer formulation containing PBS, BSA, glycerol, and sodium azide ([ab52618](#)).



Immunohistochemistry (Formalin/PFA-fixed paraffin-embedded sections) - Anti-MKK7 antibody [EP1455Y] - BSA and Azide free (ab239843)

Ab52618 at 1/50 dilution staining human bladder tissue; paraffin embedded.

This data was developed using the same antibody clone in a different buffer formulation containing PBS, BSA, glycerol, and sodium azide ([ab52618](#)).

Perform heat mediated antigen retrieval with citrate buffer pH 6 before commencing with IHC staining protocol.

Why choose a recombinant antibody?



Research with confidence
Consistent and reproducible results



Long-term and scalable supply
Recombinant technology



Success from the first experiment
Confirmed specificity



Ethical standards compliant
Animal-free production

Anti-MKK7 antibody [EP1455Y] - BSA and Azide free (ab239843)

Please note: All products are "FOR RESEARCH USE ONLY. NOT FOR USE IN DIAGNOSTIC PROCEDURES"

Our Abpromise to you: Quality guaranteed and expert technical support

- Replacement or refund for products not performing as stated on the datasheet
- Valid for 12 months from date of delivery
- Response to your inquiry within 24 hours
- We provide support in Chinese, English, French, German, Japanese and Spanish
- Extensive multi-media technical resources to help you
- We investigate all quality concerns to ensure our products perform to the highest standards

If the product does not perform as described on this datasheet, we will offer a refund or replacement. For full details of the Abpromise, please visit <https://www.abcam.com/abpromise> or contact our technical team.

Terms and conditions

- Guarantee only valid for products bought direct from Abcam or one of our authorized distributors