

Product datasheet

Anti-Mkl1/MRTFA antibody ab229215

1 Image

Overview

---

<b>Product name</b>	Anti-Mkl1/MRTFA antibody
<b>Description</b>	Rabbit polyclonal to Mkl1/MRTFA
<b>Host species</b>	Rabbit
<b>Tested applications</b>	<b>Suitable for:</b> WB
<b>Species reactivity</b>	<b>Reacts with:</b> Human
<b>Immunogen</b>	Recombinant fragment within Human Mkl1/MRTFA (internal sequence). The exact sequence is proprietary. Database link: <a href="#">Q969V6</a>
<b>Positive control</b>	WB: Mkl1/MRTFA-transfected HEK-293T whole cell lysate.
<b>General notes</b>	This product was previously labelled as Mkl1

Properties

---

<b>Form</b>	Liquid
<b>Storage instructions</b>	Shipped at 4°C. Store at +4°C short term (1-2 weeks). Upon delivery aliquot. Store at -20°C long term. Avoid freeze / thaw cycle.
<b>Storage buffer</b>	pH: 7.00 Preservative: 0.025% Proclin Constituents: PBS, 20% Glycerol
<b>Purity</b>	Immunogen affinity purified
<b>Clonality</b>	Polyclonal
<b>Isotype</b>	IgG

Applications

---

Our [Abpromise guarantee](#) covers the use of **ab229215** in the following tested applications.

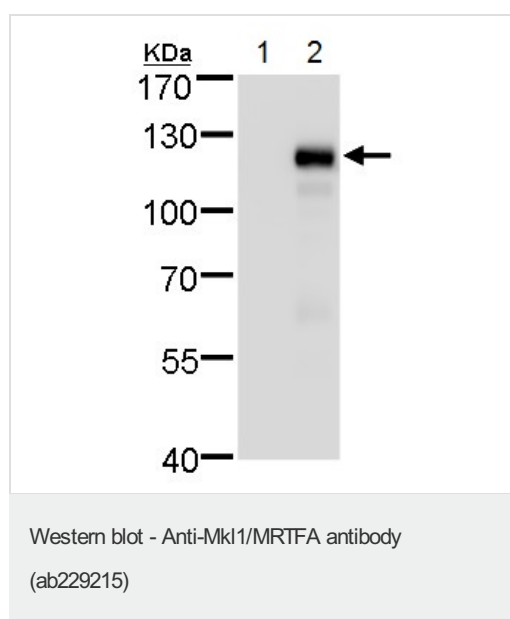
The application notes include recommended starting dilutions; optimal dilutions/concentrations should be determined by the end user.

Application	Abreviews	Notes
WB		1/1000 - 1/10000. Predicted molecular weight: 99 kDa.

## Target

<b>Function</b>	Transcriptional coactivator of serum response factor (SRF) with the potential to modulate SRF target genes. Suppresses TNF-induced cell death by inhibiting activation of caspases; its transcriptional activity is indispensable for the antiapoptotic function. It may up-regulate antiapoptotic molecules, which in turn inhibit caspase activation.
<b>Tissue specificity</b>	Ubiquitously expressed, has been detected in lung, placenta, small intestine, liver, kidney, spleen, thymus, colon, muscle, heart and brain.
<b>Involvement in disease</b>	Note=A chromosomal aberration involving MKL1 may be a cause of acute megakaryoblastic leukemia. Translocation t(1;22)(p13;q13) with RBM15. Although both reciprocal fusion transcripts are detected in acute megakaryoblastic leukemia (AMKL, FAB-M7), the RBM15-MKL1 chimeric protein has all the putative functional domains encoded by each gene and is the candidate oncogene.
<b>Sequence similarities</b>	Contains 2 RPEL repeats. Contains 1 SAP domain.
<b>Domain</b>	The N-terminal region is required for nuclear localization and the C-terminal region mediates transcriptional activity. The RPEL repeats mediate binding to globular actin.
<b>Cellular localization</b>	Cytoplasm. Nucleus. Binding to globular actin is required to maintain cytoplasmic localization.

## Images



**All lanes :** Anti-Mkl1/MRTFA antibody (ab229215) at 1/5000 dilution

**Lane 1 :** Non-transfected HEK-293T (human epithelial cell line from embryonic kidney transformed with large T antigen) whole cell lysate

**Lane 2 :** HEK-293T (human epithelial cell line from embryonic kidney transformed with large T antigen) transfected with Mkl1/MRTFA, whole cell lysate

Lysates/proteins at 30 µg per lane.

**Predicted band size:** 99 kDa

7.5% SDS-PAGE gel.

**Please note:** All products are "FOR RESEARCH USE ONLY. NOT FOR USE IN DIAGNOSTIC PROCEDURES"

### **Our Abpromise to you: Quality guaranteed and expert technical support**

---

- Replacement or refund for products not performing as stated on the datasheet
- Valid for 12 months from date of delivery
- Response to your inquiry within 24 hours
  
- We provide support in Chinese, English, French, German, Japanese and Spanish
- Extensive multi-media technical resources to help you
- We investigate all quality concerns to ensure our products perform to the highest standards

If the product does not perform as described on this datasheet, we will offer a refund or replacement. For full details of the Abpromise, please visit <https://www.abcam.com/abpromise> or contact our technical team.

### **Terms and conditions**

---

- Guarantee only valid for products bought direct from Abcam or one of our authorized distributors