




Product datasheet

Anti-MKLP1 antibody ab235955

1 References 1 Image

Overview

<b>Product name</b>	Anti-MKLP1 antibody
<b>Description</b>	Rabbit polyclonal to MKLP1
<b>Host species</b>	Rabbit
<b>Tested applications</b>	<b>Suitable for:</b> IHC-P
<b>Species reactivity</b>	<b>Reacts with:</b> Human <b>Predicted to work with:</b> Mouse 
<b>Immunogen</b>	Recombinant fragment corresponding to Human MKLP1 aa 865-960. Sequence: LASDGEIETKLIKGDYKTRGGGQSVQFTDIETLKQESP NGSRKRRSSTV APAQPDGAESEWTDVETRCVAVEMRAGSQLGPGY QHHAQPKRKKP  Database link: <a href="#">Q02241</a>   <a href="#">Run BLAST with</a>  <a href="#">Run BLAST with</a>
<b>Positive control</b>	IHC-P: Human kidney tissue.

Properties

<b>Form</b>	Liquid
<b>Storage instructions</b>	Shipped at 4°C. Store at +4°C short term (1-2 weeks). Upon delivery aliquot. Store at -20°C long term. Avoid freeze / thaw cycle.
<b>Storage buffer</b>	pH: 7.4 Preservative: 0.03% Proclin Constituents: PBS, 50% Glycerol
<b>Purity</b>	Protein G purified
<b>Purification notes</b>	Purity >95%.
<b>Clonality</b>	Polyclonal
<b>Isotype</b>	IgG

## Applications

Our [Abpromise guarantee](#) covers the use of **ab235955** in the following tested applications.

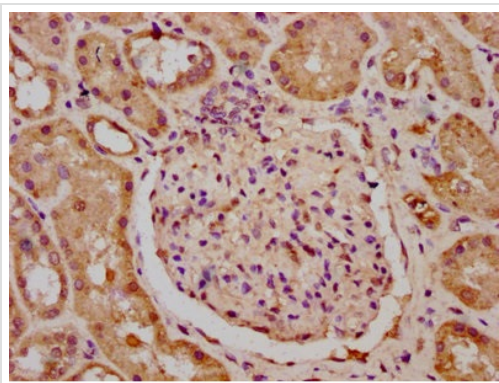
The application notes include recommended starting dilutions; optimal dilutions/concentrations should be determined by the end user.

Application	Abreviews	Notes
IHC-P		1/200 - 1/500.

## Target

<b>Function</b>	Plus-end-directed motor enzyme that moves antiparallel microtubules in vitro. Localizes to the interzone of mitotic spindles.
<b>Sequence similarities</b>	Belongs to the kinesin-like protein family. Contains 1 kinesin-motor domain.
<b>Cellular localization</b>	Nucleus. Cytoplasm > cytoskeleton > spindle.

## Images



Immunohistochemistry (Formalin/PFA-fixed paraffin-embedded sections) - Anti-MKLP1 antibody (ab235955)

Paraffin-embedded human kidney tissue stained for MKLP1 using ab235955 at 1/400 dilution in immunohistochemical analysis.

After dewaxing and hydration, antigen retrieval was mediated by high pressure in a citrate buffer (pH 6.0). Section was blocked with 10% normal goat serum 30 minutes at room temperature. Then primary antibody (1% BSA) was incubated at 4°C overnight. The primary is detected by a biotinylated secondary antibody and visualized using an HRP conjugated SP system.

**Please note:** All products are "FOR RESEARCH USE ONLY. NOT FOR USE IN DIAGNOSTIC PROCEDURES"

## Our Abpromise to you: Quality guaranteed and expert technical support

- Replacement or refund for products not performing as stated on the datasheet
- Valid for 12 months from date of delivery
- Response to your inquiry within 24 hours
- We provide support in Chinese, English, French, German, Japanese and Spanish
- Extensive multi-media technical resources to help you
- We investigate all quality concerns to ensure our products perform to the highest standards

If the product does not perform as described on this datasheet, we will offer a refund or replacement. For full details of the Abpromise, please visit <https://www.abcam.com/abpromise> or contact our technical team.

### **Terms and conditions**

---

- Guarantee only valid for products bought direct from Abcam or one of our authorized distributors