

Product datasheet

Anti-MKLP1 antibody [EPR10879] ab174304

Recombinant RabMAb

3 References 8 Images

Overview

Product name	Anti-MKLP1 antibody [EPR10879]
Description	Rabbit monoclonal [EPR10879] to MKLP1
Host species	Rabbit
Tested applications	Suitable for: ICC/IF, WB Unsuitable for: IHC-P
Species reactivity	Reacts with: Mouse, Rat, Human
Immunogen	Synthetic peptide within Human MKLP1 aa 800-900 (Cysteine residue). The exact sequence is proprietary. Database link: Q02241
Positive control	HeLa, 293T and A549 cell lysates. A547 cells.
General notes	This product is a recombinant monoclonal antibody, which offers several advantages including: <ul style="list-style-type: none"> - High batch-to-batch consistency and reproducibility - Improved sensitivity and specificity - Long-term security of supply - Animal-free production For more information see here . Our RabMAb [®] technology is a patented hybridoma-based technology for making rabbit monoclonal antibodies. For details on our patents, please refer to RabMAb[®] patents . We are constantly working hard to ensure we provide our customers with best in class antibodies. As a result of this work we are pleased to now offer this antibody in purified format. We are in the process of updating our datasheets. The purified format is designated 'PUR' on our product labels. If you have any questions regarding this update, please contact our Scientific Support team.

Properties

Form	Liquid
Storage instructions	Shipped at 4°C. Store at +4°C short term (1-2 weeks). Upon delivery aliquot. Store at -20°C long term. Avoid freeze / thaw cycle.
Storage buffer	Preservative: 0.01% Sodium azide

	Constituents: 40% Glycerol (glycerin, glycerine), 0.05% BSA, 59% PBS
Purity	Protein A purified
Clonality	Monoclonal
Clone number	EPR10879
Isotype	IgG

Applications

The Abpromise guarantee Our [Abpromise guarantee](#) covers the use of ab174304 in the following tested applications. The application notes include recommended starting dilutions; optimal dilutions/concentrations should be determined by the end user.

Application	Abreviews	Notes
ICC/IF		1/200 - 1/400.
WB		1/1000. Predicted molecular weight: 110 kDa.

Application notes Is unsuitable for IHC-P.

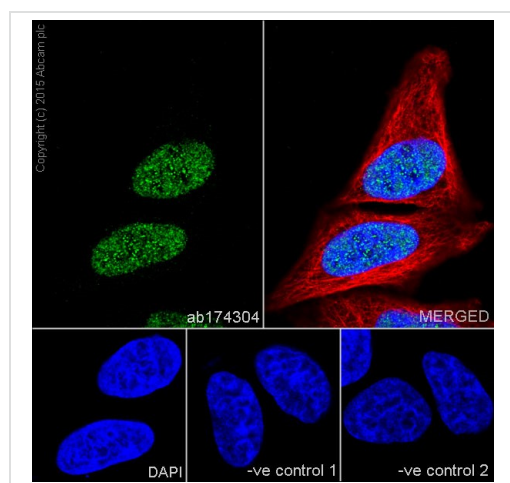
Target

Function Plus-end-directed motor enzyme that moves antiparallel microtubules in vitro. Localizes to the interzone of mitotic spindles.

Sequence similarities Belongs to the kinesin-like protein family. Contains 1 kinesin-motor domain.

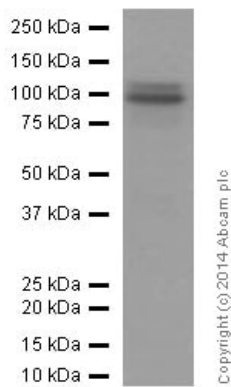
Cellular localization Nucleus. Cytoplasm > cytoskeleton > spindle.

Images



Immunocytochemistry/ Immunofluorescence - Anti-MKLP1 antibody [EPR10879] (ab174304)

Immunofluorescence staining of HeLa cells with purified ab174304 at a working dilution of 1 in 400, counter-stained with DAPI. Tubulin was stained with mouse anti-tubulin at a dilution of 1/1000 ([ab7291](#)) and Alexa Fluor[®] 594 goat anti-mouse at a dilution of 1/500 ([ab150120](#)). The secondary antibody was [ab150077](#) Alexa Fluor[®] 488 goat anti rabbit, used at a dilution of 1 in 500. The cells were fixed in 4% PFA and permeabilized using 0.1% Triton X 100. The negative controls are shown in the bottom middle and right hand panels - for the first negative control, purified ab174304 was used at a dilution of 1/200 followed by an Alexa Fluor[®] 555 goat anti-mouse antibody at a dilution of 1/500 and for the second negative control mouse primary antibody ([ab7291](#)) and anti-rabbit secondary antibody ([ab15007](#)) were used.



Western blot - Anti-MKLP1 antibody [EPR10879]
(ab174304)

Anti-MKLP1 antibody [EPR10879] (ab174304) at 1/5000 dilution
(purified) + RAW264.7 cell lysate at 20 µg

Secondary

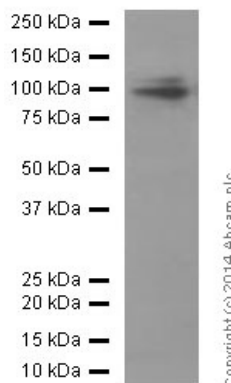
HRP goat anti-rabbit (H+L) at 1/1000 dilution

Predicted band size: 110 kDa

Observed band size: 98 kDa

Blocking buffer: 5% NFDm/TBST

Dilution buffer: 5% NFDm/TBST



Western blot - Anti-MKLP1 antibody [EPR10879]
(ab174304)

Anti-MKLP1 antibody [EPR10879] (ab174304) at 1/1000 dilution
(purified) + Rat lung tissue lysate at 20 µg

Secondary

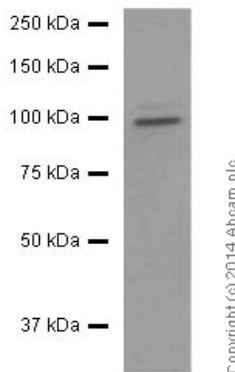
HRP goat anti-rabbit (H+L) at 1/1000 dilution

Predicted band size: 110 kDa

Observed band size: 98 kDa

Blocking buffer: 5% NFDm/TBST

Dilution buffer: 5% NFDm/TBST



Western blot - Anti-MKLP1 antibody [EPR10879]
(ab174304)

Anti-MKLP1 antibody [EPR10879] (ab174304) at 1/20000 dilution
(purified) + HeLa cell lysate at 10 µg

Secondary

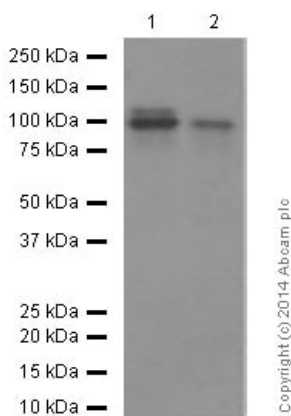
HRP goat anti-rabbit (H+L) at 1/1000 dilution

Predicted band size: 110 kDa

Observed band size: 98 kDa

Blocking buffer: 5% NFDm/TBST

Dilution buffer: 5% NFDm/TBST



Western blot - Anti-MKLP1 antibody [EPR10879] (ab174304)

All lanes : Anti-MKLP1 antibody [EPR10879] (ab174304) at 1/5000 dilution (purified)

Lane 1 : HEK293 cell lysate

Lane 2 : A549 cell lysate

Lysates/proteins at 20 µg per lane.

Secondary

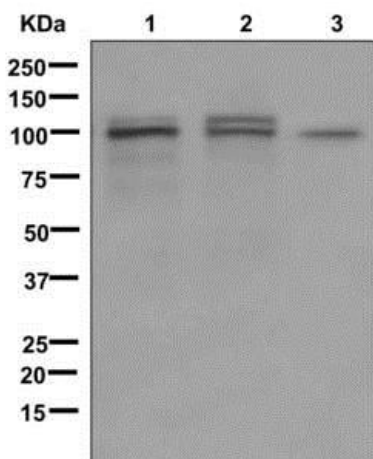
All lanes : HRP goat anti-rabbit (H+L) at 1/1000 dilution

Predicted band size: 110 kDa

Observed band size: 110 kDa

Blocking buffer: 5% NFDm/TBST

Dilution buffer: 5% NFDm/TBST



Western blot - Anti-MKLP1 antibody [EPR10879] (ab174304)

All lanes : Anti-MKLP1 antibody [EPR10879] (ab174304) at 1/1000 dilution (unpurified)

Lane 1 : HeLa cell lysate

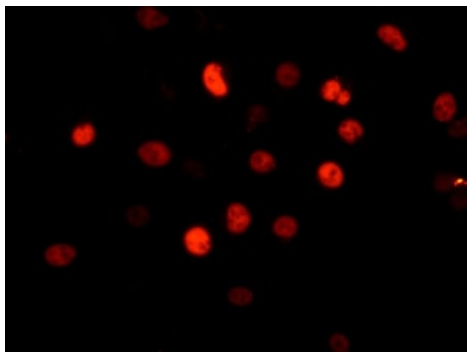
Lane 2 : 293T cell lysate

Lane 3 : A549 cell lysate

Lysates/proteins at 10 µg per lane.

Predicted band size: 110 kDa

Additional bands at: 98-110 kDa. We are unsure as to the identity of these extra bands.



Immunofluorescent analysis of A547 cells labeling MKLP1 with unpurified ab174304 at 1/100.

Immunocytochemistry/ Immunofluorescence - Anti-MKLP1 antibody [EPR10879] (ab174304)

Why choose a recombinant antibody?



Research with confidence
Consistent and reproducible results



Long-term and scalable supply
Recombinant technology



Success from the first experiment
Confirmed specificity



Ethical standards compliant
Animal-free production

Anti-MKLP1 antibody [EPR10879] (ab174304)

Please note: All products are "FOR RESEARCH USE ONLY. NOT FOR USE IN DIAGNOSTIC PROCEDURES"

Our Abpromise to you: Quality guaranteed and expert technical support

- Replacement or refund for products not performing as stated on the datasheet
- Valid for 12 months from date of delivery
- Response to your inquiry within 24 hours
- We provide support in Chinese, English, French, German, Japanese and Spanish
- Extensive multi-media technical resources to help you
- We investigate all quality concerns to ensure our products perform to the highest standards

If the product does not perform as described on this datasheet, we will offer a refund or replacement. For full details of the Abpromise, please visit <https://www.abcam.com/abpromise> or contact our technical team.

Terms and conditions

- Guarantee only valid for products bought direct from Abcam or one of our authorized distributors