

## Product datasheet

# Anti-MKLP1 antibody [EPR10879] - BSA and Azide free ab240178

Recombinant RabMAb

[4 Images](#)

### Overview

<b>Product name</b>	Anti-MKLP1 antibody [EPR10879] - BSA and Azide free
<b>Description</b>	Rabbit monoclonal [EPR10879] to MKLP1 - BSA and Azide free
<b>Host species</b>	Rabbit
<b>Tested applications</b>	<b>Suitable for:</b> ICC/IF, WB <b>Unsuitable for:</b> IHC-P
<b>Species reactivity</b>	<b>Reacts with:</b> Mouse, Rat, Human
<b>Immunogen</b>	Synthetic peptide. This information is proprietary to Abcam and/or its suppliers.
<b>General notes</b>	<p>ab240178 is the carrier-free version of <a href="#">ab174304</a>.</p> <p>Our <b>carrier-free</b> antibodies are typically supplied in a PBS-only formulation, purified and free of BSA, sodium azide and glycerol. The carrier-free buffer and high concentration allow for increased conjugation efficiency.</p> <p>This conjugation-ready format is designed for use with fluorochromes, metal isotopes, oligonucleotides, and enzymes, which makes them ideal for antibody labelling, functional and cell-based assays, flow-based assays (e.g. mass cytometry) and Multiplex Imaging applications.</p> <p>Use our <b>conjugation kits</b> for antibody conjugates that are ready-to-use in as little as 20 minutes with &lt;1 minute hands-on-time and 100% antibody recovery: available for fluorescent dyes, HRP, biotin and gold.</p> <p>This product is compatible with the Maxpar<sup>®</sup> Antibody Labeling Kit from Fluidigm, without the need for antibody preparation. Maxpar<sup>®</sup> is a trademark of Fluidigm Canada Inc.</p> <p>This product is a recombinant monoclonal antibody, which offers several advantages including:</p> <ul style="list-style-type: none"><li>- High batch-to-batch consistency and reproducibility</li><li>- Improved sensitivity and specificity</li><li>- Long-term security of supply</li><li>- Animal-free production</li></ul> <p>For more information <a href="#">see here</a>.</p> <p>Our RabMAb<sup>®</sup> technology is a patented hybridoma-based technology for making rabbit monoclonal antibodies. For details on our patents, please refer to <a href="#">RabMAb<sup>®</sup> patents</a>.</p>

## Properties

---

<b>Form</b>	Liquid
<b>Storage instructions</b>	Shipped at 4°C. Store at +4°C. Do Not Freeze.
<b>Storage buffer</b>	pH: 7.2 Constituent: PBS
<b>Carrier free</b>	Yes
<b>Purity</b>	Protein A purified
<b>Clonality</b>	Monoclonal
<b>Clone number</b>	EPR10879
<b>Isotype</b>	IgG

## Applications

---

**The Abpromise guarantee** Our **Abpromise guarantee** covers the use of ab240178 in the following tested applications. The application notes include recommended starting dilutions; optimal dilutions/concentrations should be determined by the end user.

Application	Abreviews	Notes
ICC/IF		Use at an assay dependent concentration.
WB		Use at an assay dependent concentration. Predicted molecular weight: 110 kDa.

**Application notes** Is unsuitable for IHC-P.

## Target

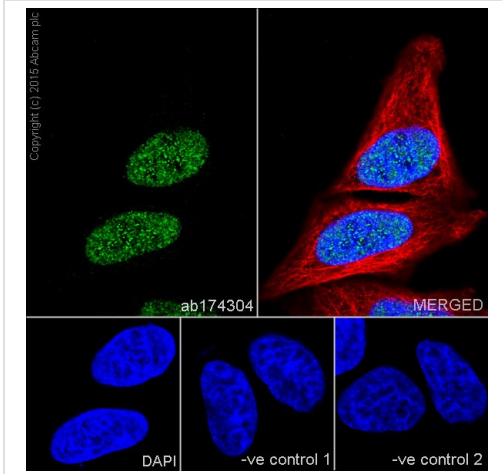
---

<b>Function</b>	Plus-end-directed motor enzyme that moves antiparallel microtubules in vitro. Localizes to the interzone of mitotic spindles.
<b>Sequence similarities</b>	Belongs to the kinesin-like protein family. Contains 1 kinesin-motor domain.
<b>Cellular localization</b>	Nucleus. Cytoplasm > cytoskeleton > spindle.

---

## Images

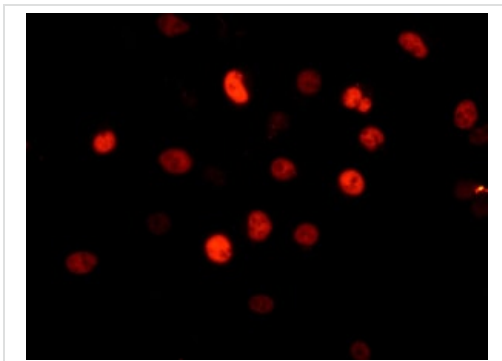
---



Immunocytochemistry/ Immunofluorescence - Anti-MKLP1 antibody [EPR10879] - BSA and Azide free (ab240178)

Immunofluorescence staining of HeLa cells with purified **ab174304** at a working dilution of 1 in 400, counter-stained with DAPI. Tubulin was stained with mouse anti-tubulin at a dilution of 1/1000 (**ab7291**) and Alexa Fluor<sup>®</sup> 594 goat anti-mouse at a dilution of 1/500 (**ab150120**). The secondary antibody was **ab150077** Alexa Fluor<sup>®</sup> 488 goat anti rabbit, used at a dilution of 1 in 500. The cells were fixed in 4% PFA and permeabilized using 0.1% Triton X 100. The negative controls are shown in the bottom middle and right hand panels - for the first negative control, purified **ab174304** was used at a dilution of 1/200 followed by an Alexa Fluor<sup>®</sup> 555 goat anti-mouse antibody at a dilution of 1/500 and for the second negative control mouse primary antibody (**ab7291**) and anti-rabbit secondary antibody (**ab15007**) were used.

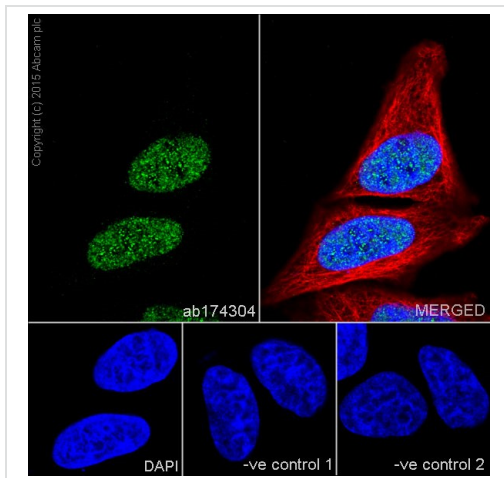
This data was developed using the same antibody clone in a different buffer formulation containing PBS, BSA, glycerol, and sodium azide (**ab174304**).



Immunocytochemistry/ Immunofluorescence - Anti-MKLP1 antibody [EPR10879] - BSA and Azide free (ab240178)

Immunofluorescent analysis of A547 cells labeling MKLP1 with unpurified **ab174304** at 1/100.

This data was developed using the same antibody clone in a different buffer formulation containing PBS, BSA, glycerol, and sodium azide (**ab174304**).







Immunocytochemistry/ Immunofluorescence - Anti-MKLP1 antibody [EPR10879] - BSA and Azide free (ab240178)

Immunofluorescence staining of HeLa (Human epithelial cell line from cervix adenocarcinoma) cells with purified **ab174304** at a working dilution of 1 in 400, counter-stained with DAPI. Tubulin was stained with mouse anti-tubulin at a dilution of 1/1000 (**ab7291**) and Alexa Fluor<sup>®</sup> 594 goat anti-mouse at a dilution of 1/500 (**ab150120**). The secondary antibody was **ab150077** Alexa Fluor<sup>®</sup> 488 goat anti rabbit, used at a dilution of 1 in 500. The cells were fixed in 4% PFA and permeabilized using 0.1% Triton X 100. The negative controls are shown in the bottom middle and right hand panels - for the first negative control, purified **ab174304** was used at a dilution of 1/200 followed by an Alexa Fluor<sup>®</sup> 555 goat anti-mouse antibody at a dilution of 1/500 and for the second negative control mouse primary antibody (**ab7291**) and anti-rabbit secondary antibody (**ab15007**) were used.

This data was developed using the same antibody clone in a different buffer formulation containing PBS, BSA, glycerol and sodium azide (**ab174304**).

Why choose a recombinant antibody?

 <b>Research with confidence</b> Consistent and reproducible results	 <b>Long-term and scalable supply</b> Recombinant technology
 <b>Success from the first experiment</b> Confirmed specificity	 <b>Ethical standards compliant</b> Animal-free production

Anti-MKLP1 antibody [EPR10879] - BSA and Azide free (ab240178)

**Please note:** All products are "FOR RESEARCH USE ONLY. NOT FOR USE IN DIAGNOSTIC PROCEDURES"

**Our Abpromise to you: Quality guaranteed and expert technical support**

- Replacement or refund for products not performing as stated on the datasheet

- Valid for 12 months from date of delivery
- Response to your inquiry within 24 hours
  
- We provide support in Chinese, English, French, German, Japanese and Spanish
- Extensive multi-media technical resources to help you
- We investigate all quality concerns to ensure our products perform to the highest standards

If the product does not perform as described on this datasheet, we will offer a refund or replacement. For full details of the Abpromise, please visit <https://www.abcam.com/abpromise> or contact our technical team.

### **Terms and conditions**

---

- Guarantee only valid for products bought direct from Abcam or one of our authorized distributors