

## Product datasheet

# Anti-MLF1 Interacting Protein/PBIP1 (phospho T78) antibody ab34911

★★★★☆ 1 Abreviews 4 References 2 Images

### Overview

<b>Product name</b>	Anti-MLF1 Interacting Protein/PBIP1 (phospho T78) antibody
<b>Description</b>	Rabbit polyclonal to MLF1 Interacting Protein/PBIP1 (phospho T78)
<b>Host species</b>	Rabbit
<b>Tested applications</b>	<b>Suitable for:</b> IHC-P, WB, ELISA, ICC/IF
<b>Species reactivity</b>	<b>Reacts with:</b> Mouse, Human <b>Predicted to work with:</b> Rat, Cow
<b>Immunogen</b>	Synthetic peptide: PLHSTAYAD , corresponding to amino acids 73-83 of Human MLF1 Interacting Protein <a href="#">Run BLAST with</a> <a href="#">Run BLAST with</a>

### Properties

<b>Form</b>	Liquid
<b>Storage instructions</b>	Shipped at 4°C. Upon delivery aliquot and store at -20°C or -80°C. Avoid repeated freeze / thaw cycles.
<b>Storage buffer</b>	pH: 7.20 Preservative: 0.01% Sodium azide Constituents: 0.42% Potassium phosphate, 0.87% Sodium chloride
<b>Purity</b>	Immunogen affinity purified
<b>Clonality</b>	Polyclonal
<b>Isotype</b>	IgG

### Applications

Our [Abpromise guarantee](#) covers the use of **ab34911** in the following tested applications.

The application notes include recommended starting dilutions; optimal dilutions/concentrations should be determined by the end user.

Application	Abreviews	Notes
IHC-P		Use a concentration of 20 µg/ml.
WB		1/500 - 1/2000. Predicted molecular weight: 48 kDa.
ELISA		1/5000 - 1/25000.
ICC/IF	★★★★☆	Use at an assay dependent concentration.

## Target

### Function

Component of the CENPA-NAC (nucleosome-associated) complex, a complex that plays a central role in assembly of kinetochore proteins, mitotic progression and chromosome segregation. The CENPA-NAC complex recruits the CENPA-CAD (nucleosome distal) complex and may be involved in incorporation of newly synthesized CENPA into centromeres. Plays an important role in the correct PLK1 localization to the mitotic kinetochores. A scaffold protein responsible for the initial recruitment and maintenance of the kinetochore PLK1 population until its degradation. Involved in transcriptional repression.

### Tissue specificity

Expressed at high levels in the testis, fetal liver, thymus, bone marrow and at lower levels in the lymph nodes, placenta, colon and spleen. Present in all cell lines examined, including B-cells, T-cells, epithelial cells and fibroblast cells. Expressed at high levels in glioblastoma cell lines.

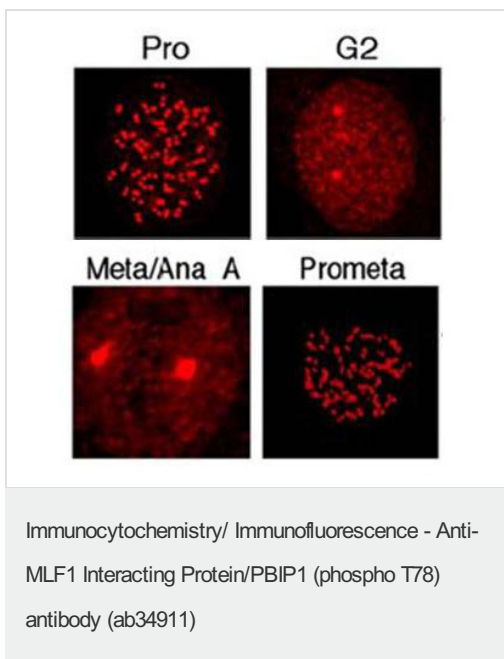
### Post-translational modifications

Phosphorylated by PLK1 at Thr-78, creating a self-tethering site that specifically interacts with the polo-box domain of PLK1.

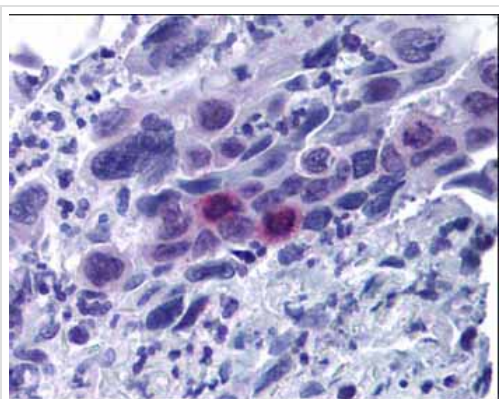
### Cellular localization

Cytoplasm. Nucleus. Chromosome > centromere > kinetochore. Localizes in the kinetochore domain of centromeres. Colocalizes with PLK1 at the interzone between the inner and the outer kinetochore plates.

## Images



Immunocytochemical immunofluorescence analysis of HeLa cells in different phases of the cell cycle (as marked), labelling MLF1 Interacting Protein (PBIP1) with a phospho Tyrosine 78 modification, with ab34911.



Immunohistochemistry (Formalin/PFA-fixed paraffin-embedded sections) - Anti-MLF1 Interacting Protein/PBIP1 (phospho T78) antibody (ab34911)

ab34911 at 20 µg/ml staining mitotic cells in human colon adenocarcinoma at 60X. The image shows localization of the antibody as the precipitated red signal, with a hematoxylin purple nuclear counterstain.

**Please note:** All products are "FOR RESEARCH USE ONLY. NOT FOR USE IN DIAGNOSTIC PROCEDURES"

### Our Abpromise to you: Quality guaranteed and expert technical support

---

- Replacement or refund for products not performing as stated on the datasheet
- Valid for 12 months from date of delivery
- Response to your inquiry within 24 hours
- We provide support in Chinese, English, French, German, Japanese and Spanish
- Extensive multi-media technical resources to help you
- We investigate all quality concerns to ensure our products perform to the highest standards

If the product does not perform as described on this datasheet, we will offer a refund or replacement. For full details of the Abpromise, please visit <https://www.abcam.com/abpromise> or contact our technical team.

### Terms and conditions

---

- Guarantee only valid for products bought direct from Abcam or one of our authorized distributors