

Product datasheet

Anti-MLKL (phospho S358) antibody [EPR9514] - BSA and Azide free ab208909

Recombinant RabMAb

[4 References](#) [3 Images](#)

Overview

Product name	Anti-MLKL (phospho S358) antibody [EPR9514] - BSA and Azide free
Description	Rabbit monoclonal [EPR9514] to MLKL (phospho S358) - BSA and Azide free
Host species	Rabbit
Specificity	Stimulation may be required to allow detection of the phosphorylated protein. Please see images below for recommended treatment conditions and positive controls.
Tested applications	Suitable for: Dot blot, WB, IHC-P
Species reactivity	Reacts with: Human Does not react with: Mouse, Rat
Immunogen	Synthetic peptide (the amino acid sequence is considered to be commercially sensitive) within Human MLKL aa 350-450 (phospho S358). The exact sequence is proprietary. Database link: Q8NB16
Positive control	HT-29 cell lysate treated with TNF alpha+ Smac mimetic+ z-VAD HT-29 cells were treated with the indicated stimuli for 8 hr and then harvested. The final concentrations of 20 ng/ml TNF- α , 100 nM Smac mimetic, and 20 mM z-VAD were used to induce necrosis
General notes	ab208909 is the carrier-free version of ab187091 This format is designed for use in antibody labeling, including fluorochromes, metal isotopes, oligonucleotides, enzymes.

Our [carrier-free formats](#) are supplied in a buffer free of BSA, sodium azide and glycerol for higher conjugation efficiency.

Use our [conjugation kits](#) for antibody conjugates that are ready-to-use in as little as 20 minutes with <1 minute hands-on-time and 100% antibody recovery: available for fluorescent dyes, HRP, biotin and gold.

Ab208909 is compatible with the Maxpar® Antibody Labeling Kit from Fluidigm.

Maxpar® is a trademark of Fluidigm Canada Inc.

This antibody was developed through collaboration with the lab of Xiaodong Wang at the National Institute of Biological Sciences, Beijing.

This product is a recombinant monoclonal antibody, which offers several advantages including:

- High batch-to-batch consistency and reproducibility
- Improved sensitivity and specificity

- Long-term security of supply

- Animal-free production

For more information [see here](#).

Our RabMAb[®] technology is a patented hybridoma-based technology for making rabbit monoclonal antibodies. For details on our patents, please refer to [RabMAb[®] patents](#).

Properties

Form	Liquid
Storage instructions	Shipped at 4°C. Store at +4°C. Do Not Freeze.
Storage buffer	pH: 7.2 Constituent: PBS
Carrier free	Yes
Purity	Protein A purified
Clonality	Monoclonal
Clone number	EPR9514
Isotype	IgG

Applications

Our [Abpromise guarantee](#) covers the use of **ab208909** in the following tested applications.

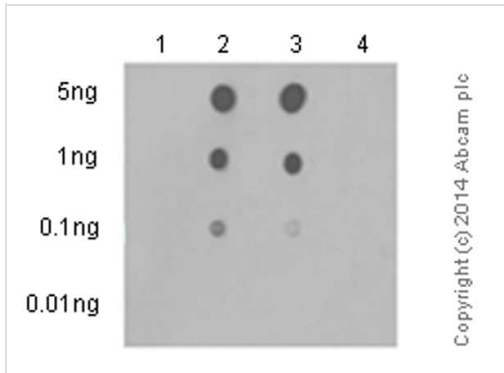
The application notes include recommended starting dilutions; optimal dilutions/concentrations should be determined by the end user.

Application	Abreviews	Notes
Dot blot		Use at an assay dependent concentration.
WB		Use at an assay dependent concentration. Predicted molecular weight: 54 kDa. Can be blocked with Human MLKL (phospho S358) peptide (ab206929) .
IHC-P		Use at an assay dependent concentration. Perform heat mediated antigen retrieval with citrate buffer pH 6 before commencing with IHC staining protocol. Not Suitable for Mouse and Rat

Target

Sequence similarities	Belongs to the protein kinase superfamily. Contains 1 protein kinase domain.
Domain	The protein kinase domain is predicted to be catalytically inactive.

Images



Dot Blot - Anti-MLKL (phospho S358) antibody [EPR9514] - BSA and Azide free (ab208909)

Dot blot analysis of MLKL peptides using [ab187091](#) at 1/1000 dilution followed by Goat Anti-Rabbit IgG, (H+L), Peroxidase conjugated secondary antibody at 1/1000 dilution. Blocking and diluting buffer was 5% NFDm/TBST, exposure time 3 minutes.

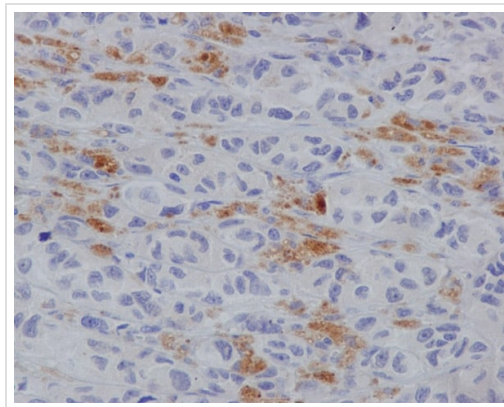
Lane 1: MLKL (pT357) phospho peptide

Lane 2: MLKL (pS358) phospho peptide

Lane 3: MLKL (pT357/pS358) phospho peptide

Lane 4: MLKL non-phospho peptide

This data was developed using the same antibody clone in a different buffer formulation containing PBS, BSA, glycerol, and sodium azide ([ab187091](#)).



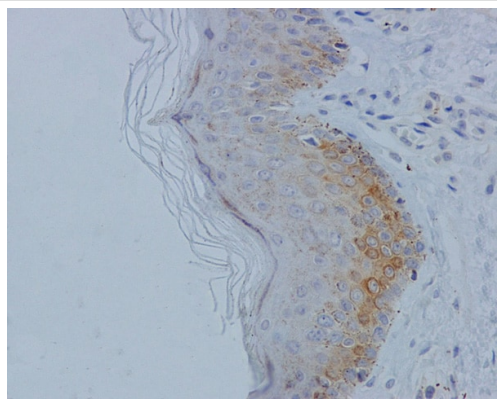
Immunohistochemistry (Formalin/PFA-fixed paraffin-embedded sections) - Anti-MLKL (phospho S358) antibody [EPR9514] - BSA and Azide free (ab208909)

[ab187091](#) at 1:250 staining MLKL (phospho S358) in Human melanoma tissue by immunohistochemistry (FFPE).

Antigen retrieval required on FFPE tissue: HIER using 10mM Citrate buffer pH 6.0, [see recommended HIER protocol](#)

For additional IHC guideline, please see [IHC resource page](#)

This data was developed using the same antibody clone in a different buffer formulation containing PBS, BSA, glycerol, and sodium azide ([ab187091](#)).



Immunohistochemistry (Formalin/PFA-fixed paraffin-embedded sections) - Anti-MLKL (phospho S358) antibody [EPR9514] - BSA and Azide free (ab208909)

This IHC data was generated using the same anti-MLKL (phospho S358) in a different buffer formulation (cat# [ab187091](#)).

[ab187091](#) at 1:250 staining MLKL (phospho S358) in Human skin tissue by immunohistochemistry (FFPE).

Antigen retrieval required on FFPE tissue: HIER using 10mM Citrate buffer pH 6.0, see [recommended HIER protocol](#)

For additional IHC guideline, please see [IHC resource page](#)

Please note: All products are "FOR RESEARCH USE ONLY. NOT FOR USE IN DIAGNOSTIC PROCEDURES"

Our Abpromise to you: Quality guaranteed and expert technical support

- Replacement or refund for products not performing as stated on the datasheet
- Valid for 12 months from date of delivery
- Response to your inquiry within 24 hours
- We provide support in Chinese, English, French, German, Japanese and Spanish
- Extensive multi-media technical resources to help you
- We investigate all quality concerns to ensure our products perform to the highest standards

If the product does not perform as described on this datasheet, we will offer a refund or replacement. For full details of the Abpromise, please visit <https://www.abcam.com/abpromise> or contact our technical team.

Terms and conditions

- Guarantee only valid for products bought direct from Abcam or one of our authorized distributors