

Product datasheet

Anti-MLKL (phospho Y222) antibody [EPR19816] ab206336

Recombinant RabMAb

1 Image

Overview

Product name	Anti-MLKL (phospho Y222) antibody [EPR19816]
Description	Rabbit monoclonal [EPR19816] to MLKL (phospho Y222)
Host species	Rabbit
Tested applications	Suitable for: WB
Species reactivity	Reacts with: Human
Immunogen	Synthetic peptide within Human MLKL aa 200-300 (phospho Y218 + Y222). The exact sequence is proprietary. Database link: Q8NB16
Positive control	WB: HEK-293T transfected with NPM (nucleophosmin)-ALK (anaplastic lymphoma kinase) and MLKL-WT expression vector, whole cell lysate; HEK-293T transfected with NPM (nucleophosmin)-ALK (anaplastic lymphoma kinase) and MLKL-Y23F mutant expression vector, whole cell lysate; HEK-293T transfected with NPM (nucleophosmin)-ALK (anaplastic lymphoma kinase) and MLKL-Y218F mutant expression vector, whole cell lysate
General notes	Our RabMAb [®] technology is a patented hybridoma-based technology for making rabbit monoclonal antibodies. For details on our patents, please refer to RabMAb[®] patents . This product is a recombinant rabbit monoclonal antibody .

Properties

Form	Liquid
Storage instructions	Shipped at 4°C. Store at +4°C short term (1-2 weeks). Upon delivery aliquot. Store at -20°C long term. Avoid freeze / thaw cycle.
Storage buffer	Preservative: 0.01% Sodium azide Constituents: 59% PBS, 40% Glycerol, 0.05% BSA
Purity	Protein A purified
Clonality	Monoclonal
Clone number	EPR19816
Isotype	IgG

Applications

Our [Abpromise guarantee](#) covers the use of **ab206336** in the following tested applications.

The application notes include recommended starting dilutions; optimal dilutions/concentrations should be determined by the end user.

Application	Abreviews	Notes
WB		1/1000. Detects a band of approximately 54 kDa (predicted molecular weight: 54 kDa).

Target

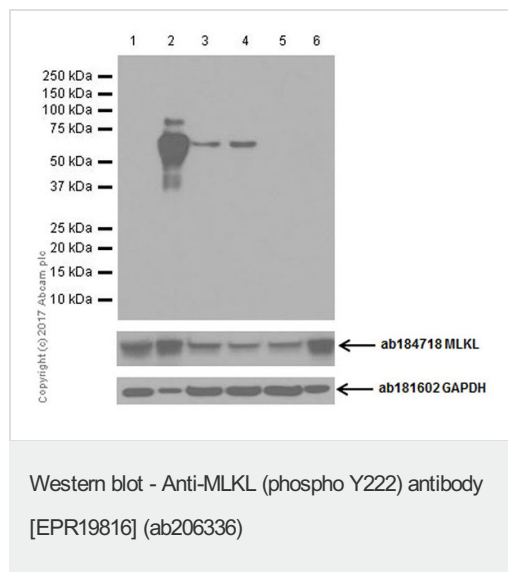
Sequence similarities

Belongs to the protein kinase superfamily.
Contains 1 protein kinase domain.

Domain

The protein kinase domain is predicted to be catalytically inactive.

Images



All lanes : Anti-MLKL (phospho Y222) antibody [EPR19816] (ab206336) at 1/1000 dilution

Lane 1 : HEK-293T (Human epithelial cell line from embryonic kidney) transfected with MLKL-WT expression vector, whole cell lysate at 20 μ g

Lane 2 : HEK-293T (Human epithelial cell line from embryonic kidney) transfected with NPM (nucleophosmin)-ALK (anaplastic lymphoma kinase) and MLKL-WT expression vector, whole cell lysate at 4 μ g

Lane 3 : HEK-293T (Human epithelial cell line from embryonic kidney) transfected with NPM (nucleophosmin)-ALK (anaplastic lymphoma kinase) and MLKL-Y23F mutant expression vector, whole cell lysate at 20 μ g

Lane 4 : HEK-293T (Human epithelial cell line from embryonic kidney) transfected with NPM (nucleophosmin)-ALK (anaplastic lymphoma kinase) and MLKL-Y218F mutant expression vector, whole cell lysate at 20 μ g

Lane 5 : HEK-293T (Human epithelial cell line from embryonic kidney) transfected with NPM (nucleophosmin)-ALK (anaplastic lymphoma kinase) and MLKL-Y222F mutant expression vector, whole cell lysate at 20 μ g

Lane 6 : HEK-293T (Human epithelial cell line from embryonic kidney) transfected with NPM (nucleophosmin)-ALK (anaplastic lymphoma kinase) and MLKL-Y218/222F mutant expression vector,

whole cell lysate at 8 µg

Secondary

All lanes : Goat Anti-Rabbit IgG H&L (HRP) ([ab97051](#)) at 1/100000 dilution

Predicted band size: 54 kDa

Observed band size: 54 kDa

Exposure time: 1 minute

Blocking/Dilution buffer: 5% NFD/MTBST.

Lysates were kindly provided by our collaborator Dr. Xinhua Feng, Zhejiang University.

The molecular weight of NPM-ALK is around 80 kDa (lane 2) [PMID: 11090048].

This antibody can potentially cross react with other kinases.

Please note: All products are "FOR RESEARCH USE ONLY. NOT FOR USE IN DIAGNOSTIC PROCEDURES"

Our Abpromise to you: Quality guaranteed and expert technical support

- Replacement or refund for products not performing as stated on the datasheet
- Valid for 12 months from date of delivery
- Response to your inquiry within 24 hours

- We provide support in Chinese, English, French, German, Japanese and Spanish
- Extensive multi-media technical resources to help you
- We investigate all quality concerns to ensure our products perform to the highest standards

If the product does not perform as described on this datasheet, we will offer a refund or replacement. For full details of the Abpromise, please visit <https://www.abcam.com/abpromise> or contact our technical team.

Terms and conditions

- Guarantee only valid for products bought direct from Abcam or one of our authorized distributors