


Product datasheet

Anti-MLX antibody ab65147

2 Images

Overview

Product name	Anti-MLX antibody
Description	Rabbit polyclonal to MLX
Host species	Rabbit
Tested applications	Suitable for: ICC/IF, WB
Species reactivity	Reacts with: Human Predicted to work with: Mouse, Rat 
Immunogen	Synthetic peptide derived from an internal sequence of human MLX
Positive control	LOVO cell extracts.
General notes	<p>The Life Science industry has been in the grips of a reproducibility crisis for a number of years. Abcam is leading the way in addressing this with our range of recombinant monoclonal antibodies and knockout edited cell lines for gold-standard validation. Please check that this product meets your needs before purchasing.</p> <p>If you have any questions, special requirements or concerns, please send us an inquiry and/or contact our Support team ahead of purchase. Recommended alternatives for this product can be found below, along with publications, customer reviews and Q&As</p>

Properties

Form	Liquid
Storage instructions	Shipped at 4°C. Store at -20°C. Stable for 12 months at -20°C.
Storage buffer	pH: 7.40 Preservative: 0.02% Sodium azide Constituents: PBS, 50% Glycerol (glycerin, glycerine), 0.87% Sodium chloride
Purity	Immunogen affinity purified
Clonality	Polyclonal
Isotype	IgG

Applications

The Abpromise guarantee Our [Abpromise guarantee](#) covers the use of ab65147 in the following tested applications.

The application notes include recommended starting dilutions; optimal dilutions/concentrations should be determined by the end user.

Application	Abreviews	Notes
ICC/IF		
WB		

Application notes

ELISA: 1/10000.
 ICC/IF: Use at a concentration of 1 µg/ml.
 WB: 1/500 - 1/1000. Detects a band of approximately 33 kDa (predicted molecular weight: 33 kDa).

 Not yet tested in other applications.
 Optimal dilutions/concentrations should be determined by the end user.

Target

Function

Transcription regulator. Forms a sequence-specific DNA-binding protein complex with MAD1, MAD4, MNT, WBSCR14 and MLXIP which recognizes the core sequence 5'-CACGTG-3'. The TCFL4-MAD1, TCFL4-MAD4, TCFL4-WBSCR14 complexes are transcriptional repressors. Plays a role in transcriptional activation of glycolytic target genes. Involved in glucose-responsive gene regulation.

Tissue specificity

Expressed in all tissues tested, including spleen, thymus, prostate, ovary, intestine, colon, peripheral blood leukocyte, heart, liver, skeletal muscle and kidney. Lower levels of expression in testis, brain, placenta and lung.

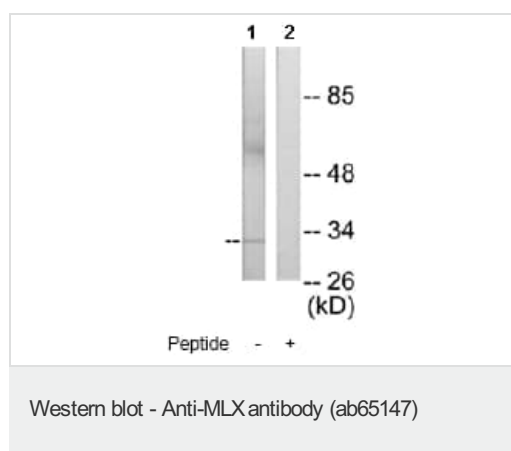
Sequence similarities

Contains 1 basic helix-loop-helix (bHLH) domain.

Cellular localization

Cytoplasm. Found predominantly in the cytoplasm and Nucleus. Found predominantly in the nucleus.

Images



All lanes : Anti-MLX antibody (ab65147) at 1/500 dilution

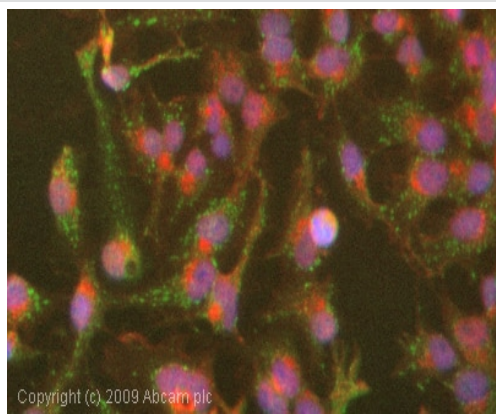
Lane 1 : LOVO cell extract

Lane 2 : LOVO cell extract with immunising peptide at 5 µg

Lysates/proteins at 5 µg per lane.

Predicted band size: 33 kDa

Observed band size: 33 kDa



Immunocytochemistry/ Immunofluorescence - Anti-MLX antibody (ab65147)

ICC/IF image of ab65147 stained HepG2 cells. The cells were 4% formaldehyde fixed (10 min) and then incubated in 1%BSA / 10% normal goat serum / 0.3M glycine in 0.1% PBS-Tween for 1h to permeabilise the cells and block non-specific protein-protein interactions. The cells were then incubated with the antibody (ab65147, 1µg/ml) overnight at +4°C. The secondary antibody (green) was Alexa Fluor® 488 goat anti-rabbit IgG (H+L) used at a 1/1000 dilution for 1h. Alexa Fluor® 594 WGA was used to label plasma membranes (red) at a 1/200 dilution for 1h. DAPI was used to stain the cell nuclei (blue) at a concentration of 1.43µM.

Please note: All products are "FOR RESEARCH USE ONLY. NOT FOR USE IN DIAGNOSTIC PROCEDURES"

Our Abpromise to you: Quality guaranteed and expert technical support

- Replacement or refund for products not performing as stated on the datasheet
- Valid for 12 months from date of delivery
- Response to your inquiry within 24 hours
- We provide support in Chinese, English, French, German, Japanese and Spanish
- Extensive multi-media technical resources to help you
- We investigate all quality concerns to ensure our products perform to the highest standards

If the product does not perform as described on this datasheet, we will offer a refund or replacement. For full details of the Abpromise, please visit <https://www.abcam.com/abpromise> or contact our technical team.

Terms and conditions

- Guarantee only valid for products bought direct from Abcam or one of our authorized distributors