

## Product datasheet

# Anti-MMP3 antibody [EP1186Y] ab52915

Recombinant RabMAb

★★★★★ 3 Abreviews 53 References 9 Images

### Overview

<b>Product name</b>	Anti-MMP3 antibody [EP1186Y]
<b>Description</b>	Rabbit monoclonal [EP1186Y] to MMP3
<b>Host species</b>	Rabbit
<b>Specificity</b>	79% identities with MMP10
<b>Tested applications</b>	<b>Suitable for:</b> WB, IHC-P, ICC/IF
<b>Species reactivity</b>	<b>Reacts with:</b> Mouse, Rat, Human
<b>Immunogen</b>	Synthetic peptide within Human MMP3 aa 450 to the C-terminus (C terminal). The exact sequence is proprietary.
<b>Positive control</b>	Human gastric carcinoma tissue.
<b>General notes</b>	

A trial size is available to purchase for this antibody.

Our RabMAb<sup>®</sup> technology is a patented hybridoma-based technology for making rabbit monoclonal antibodies. For details on our patents, please refer to [RabMAb<sup>®</sup> patents](#).

**We are constantly working hard to ensure we provide our customers with best in class antibodies. As a result of this work we are pleased to now offer this antibody in purified format. We are in the process of updating our datasheets. The purified format is designated 'PUR' on our product labels. If you have any questions regarding this update, please contact our Scientific Support team.**

This product is a [recombinant rabbit monoclonal antibody](#).

### Properties

<b>Form</b>	Liquid
<b>Storage instructions</b>	Shipped at 4°C. Store at +4°C short term (1-2 weeks). Upon delivery aliquot. Store at -20°C. Avoid freeze / thaw cycle.
<b>Storage buffer</b>	pH: 7.20 Preservative: 0.01% Sodium azide

	Constituents: 49% PBS, 50% Glycerol, 0.05% BSA
<b>Purity</b>	Protein A purified
<b>Clonality</b>	Monoclonal
<b>Clone number</b>	EP1186Y
<b>Isotype</b>	IgG

## Applications

Our [Abpromise guarantee](#) covers the use of **ab52915** in the following tested applications.

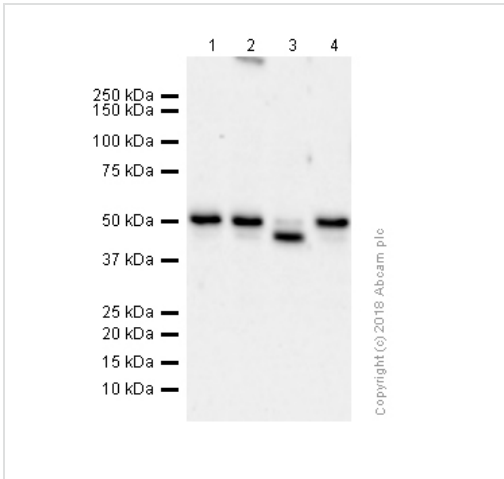
The application notes include recommended starting dilutions; optimal dilutions/concentrations should be determined by the end user.

Application	Abreviews	Notes
WB		1/1000 - 1/20000. Detects a band of approximately 50 kDa (predicted molecular weight: 54 kDa).
IHC-P	★★★★★	1/50.
ICC/IF		1/100 - 1/250.

## Target

<b>Function</b>	Can degrade fibronectin, laminin, gelatins of type I, III, IV, and V; collagens III, IV, X, and IX, and cartilage proteoglycans. Activates procollagenase.
<b>Sequence similarities</b>	Belongs to the peptidase M10A family. Contains 4 hemopexin-like domains.
<b>Domain</b>	The conserved cysteine present in the cysteine-switch motif binds the catalytic zinc ion, thus inhibiting the enzyme. The dissociation of the cysteine from the zinc ion upon the activation-peptide release activates the enzyme.
<b>Cellular localization</b>	Secreted > extracellular space > extracellular matrix.

## Images



Western blot - Anti-MMP3 antibody [EP1186Y] (ab52915)

**All lanes :** Anti-MMP3 antibody [EP1186Y] (ab52915) at 0.37 µg/ml (purified)

**Lane 1 :** Raji (Human Burkitt's lymphoma B lymphocyte )whole cell lysate

**Lane 2 :** HEK293 (Human embryonic kidney epithelial cell ) whole cell lysate

**Lane 3 :** Mouse lung lysate

**Lane 4 :** Mouse placenta lysate

Lysates/proteins at 20 µg per lane.

**Secondary**

**All lanes :** Goat Anti-Rabbit IgG H&L (HRP) (ab97051) at 1/20000 dilution

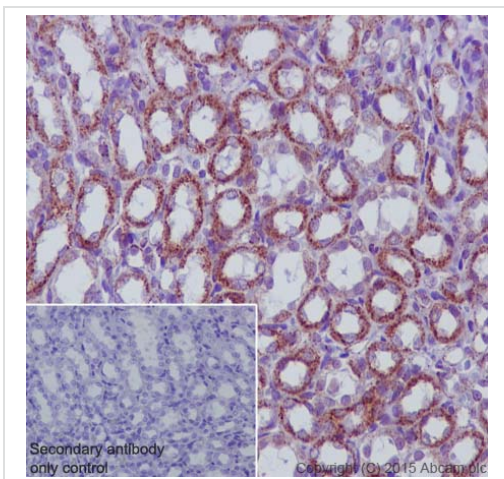
**Predicted band size:** 54 kDa

**Observed band size:** 50 kDa

[why is the actual band size different from the predicted?](#)

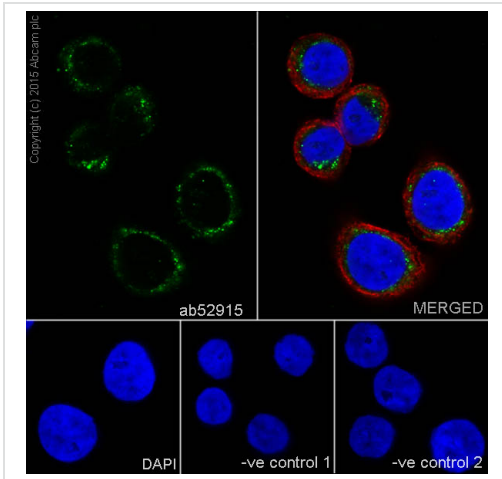
**Exposure time:** 84 seconds

Blocking and diluting buffer: 5% NFDM/TBST.



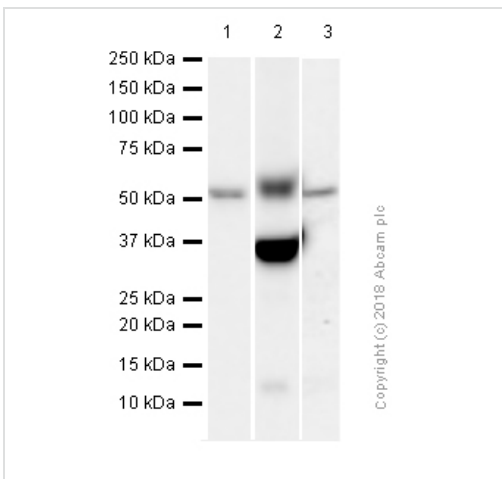
Immunohistochemistry (Formalin/PFA-fixed paraffin-embedded sections) - Anti-MMP3 antibody [EP1186Y] (ab52915)

Immunohistochemical staining of paraffin embedded rat kidney with purified ab52915 at a working dilution of 1/50. The secondary antibody used is [ab97051](#), a goat anti-rabbit IgG (H&L) at a dilution of 1/500. The sample is counter-stained with hematoxylin. Antigen retrieval was performed using Tris-EDTA buffer, pH 9.0. PBS was used instead of the primary antibody as the negative control, and is shown in the inset.



Immunocytochemistry/ Immunofluorescence - Anti-MMP3 antibody [EP1186Y] (ab52915)

Immunofluorescence staining of HT-29 cells with purified ab52915 at a working dilution of 1/100, counter-stained with DAPI. The secondary antibody was Alexa Fluor<sup>®</sup> 488 goat anti-rabbit (ab150077), used at a dilution of 1/1000. ab7291, a mouse anti-tubulin antibody (1/1000), was used to stain tubulin along with ab150120 (Alexa Fluor<sup>®</sup> 594 goat anti-mouse, 1/1000), shown in the top right hand panel. The cells were fixed in 100% methanol and permeabilized using 0.1% Triton X 100. The negative controls are shown in bottom middle and right hand panels - for negative control 1, purified ab52915 was used at a dilution of 1/500 followed by an Alexa Fluor<sup>®</sup> 594 goat anti-mouse antibody (ab150120) at a dilution of 1/500. For negative control 2, ab7291 (mouse anti-tubulin) was used at a dilution of 1/500 followed by an Alexa Fluor<sup>®</sup> 488 goat anti-rabbit antibody (ab150077) at a dilution of 1/400.



Western blot - Anti-MMP3 antibody [EP1186Y] (ab52915)

**All lanes :** Anti-MMP3 antibody [EP1186Y] (ab52915) at 0.37 µg/ml (purified)

**Lane 1 :** Rat brain lysate

**Lane 2 :** Rat liver lysate

**Lane 3 :** Rat spleen lysate

Lysates/proteins at 20 µg per lane.

### Secondary

**All lanes :** Goat Anti-Rabbit IgG H&L (HRP) (ab97051) at 1/20000 dilution

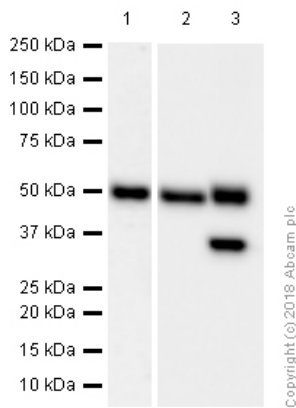
**Predicted band size:** 54 kDa

**Observed band size:** 50 kDa [why is the actual band size different from the predicted?](#)

Blocking and diluting buffer: 5% NFD/MTBST.

**Exposure time:** Lane 1 & 2: 10 seconds

Lane 3: 3 minutes



Western blot - Anti-MMP3 antibody [EP1186Y]  
(ab52915)

**All lanes :** Anti-MMP3 antibody [EP1186Y] (ab52915) at 0.37  $\mu\text{g/ml}$  (purified)

**Lane 1 :** Mouse brain lysate

**Lane 2 :** Mouse kidney lysate

**Lane 3 :** Mouse liver lysate

Lysates/proteins at 20  $\mu\text{g}$  per lane.

### Secondary

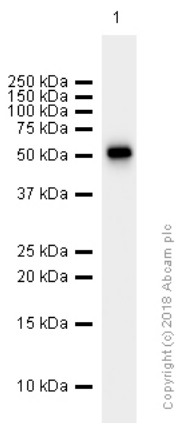
**All lanes :** Goat Anti-Rabbit IgG H&L (HRP) (ab97051) at 1/20000 dilution

**Predicted band size:** 54 kDa

Blocking and diluting buffer: 5% NFDm/TBST.

**Exposure time:** Lane 1: 3 minutes

Lane 2 & 3: 4 seconds



Western blot - Anti-MMP3 antibody [EP1186Y]  
(ab52915)

Anti-MMP3 antibody [EP1186Y] (ab52915) at 0.37  $\mu\text{g/ml}$  (purified)  
+ Rat kidney lysate at 20  $\mu\text{g}$

### Secondary

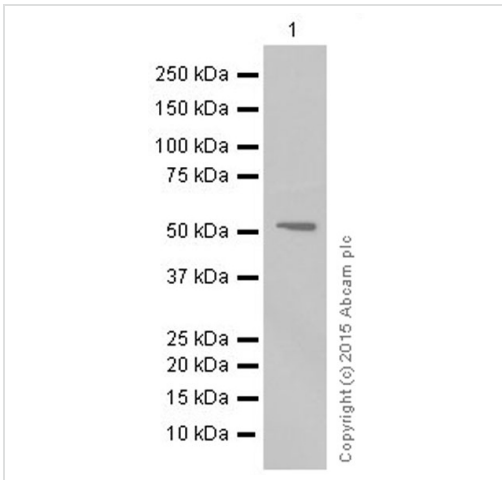
Goat Anti-Rabbit IgG H&L (HRP) (ab97051) at 1/20000 dilution

**Predicted band size:** 54 kDa

**Observed band size:** 50 kDa [why is the actual band size different from the predicted?](#)

**Exposure time:** 15 seconds

Blocking and diluting buffer: 5% NFDm/TBST



Western blot - Anti-MMP3 antibody [EP1186Y] (ab52915)

Anti-MMP3 antibody [EP1186Y] (ab52915) at 1/20000 dilution (purified) + MMP3 recombinant protein

### Secondary

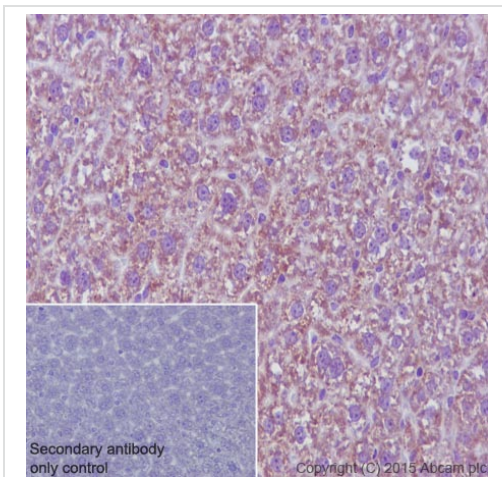
Goat Anti-Rabbit IgG H&L (HRP) (ab97051) at 1/100000 dilution

**Predicted band size:** 54 kDa

**Observed band size:** 50 kDa [why is the actual band size different from the predicted?](#)

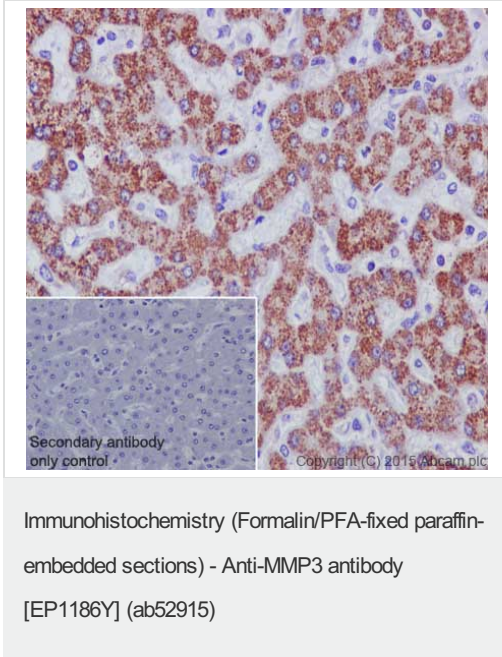
Blocking buffer: 5% NFDM/TBST

Dilution buffer: 5% NFDM/TBST



Immunohistochemistry (Formalin/PFA-fixed paraffin-embedded sections) - Anti-MMP3 antibody [EP1186Y] (ab52915)

Immunohistochemical staining of paraffin embedded mouse liver with purified ab52915 at a working dilution of 1/50. The secondary antibody used is [ab97051](#), a goat anti-rabbit IgG (H&L) at a dilution of 1/500. The sample is counter-stained with hematoxylin. Antigen retrieval was performed using Tris-EDTA buffer, pH 9.0. PBS was used instead of the primary antibody as the negative control, and is shown in the inset.



Immunohistochemical staining of paraffin embedded human liver with purified ab52915 at a working dilution of 1/50. The secondary antibody used is [ab97051](#), a goat anti-rabbit IgG (H&L) at a dilution of 1/500. The sample is counter-stained with hematoxylin. Antigen retrieval was performed using Tris-EDTA buffer, pH 9.0. PBS was used instead of the primary antibody as the negative control, and is shown in the inset.

**Please note:** All products are "FOR RESEARCH USE ONLY. NOT FOR USE IN DIAGNOSTIC PROCEDURES"

### Our Abpromise to you: Quality guaranteed and expert technical support

- Replacement or refund for products not performing as stated on the datasheet
- Valid for 12 months from date of delivery
- Response to your inquiry within 24 hours
- We provide support in Chinese, English, French, German, Japanese and Spanish
- Extensive multi-media technical resources to help you
- We investigate all quality concerns to ensure our products perform to the highest standards

If the product does not perform as described on this datasheet, we will offer a refund or replacement. For full details of the Abpromise, please visit <https://www.abcam.com/abpromise> or contact our technical team.

### Terms and conditions

- Guarantee only valid for products bought direct from Abcam or one of our authorized distributors