


## Product datasheet

# Anti-MMP8 antibody [EP1252Y] (Phycoerythrin) ab211967

RabMAb<sup>®</sup>

1 Image

### Overview

<b>Product name</b>	Anti-MMP8 antibody [EP1252Y] (Phycoerythrin)
<b>Description</b>	Rabbit monoclonal [EP1252Y] to MMP8 (Phycoerythrin)
<b>Host species</b>	Rabbit
<b>Conjugation</b>	Phycoerythrin. Ex: 488nm, Em: 575nm
<b>Tested applications</b>	<b>Suitable for:</b> Flow Cyt
<b>Species reactivity</b>	<b>Reacts with:</b> Human <b>Predicted to work with:</b> Mouse, Rat 
<b>Immunogen</b>	Synthetic peptide within Human MMP8 aa 150-250. The exact sequence is proprietary. Database link: <a href="#">P22894</a>
<b>Positive control</b>	Flow Cyt: THP-1 cells.
<b>General notes</b>	Our RabMAb <sup>®</sup> technology is a patented hybridoma-based technology for making rabbit monoclonal antibodies. For details on our patents, please refer to <a href="#">RabMab<sup>®</sup> patents</a>

### Properties

<b>Form</b>	Liquid
<b>Storage instructions</b>	Shipped at 4°C. Store at 4°C (stable for up to 12 months). Upon delivery aliquot. Store at +4°C. Do Not Freeze. Store In the Dark.
<b>Storage buffer</b>	pH: 7.4 Preservative: 0.02% Sodium azide Constituents: 1% BSA, PBS
<b>Purity</b>	Immunogen affinity purified
<b>Clonality</b>	Monoclonal
<b>Clone number</b>	EP1252Y
<b>Isotype</b>	IgG

### Applications

## Applications

Our [Abpromise guarantee](#) covers the use of **ab211967** in the following tested applications.

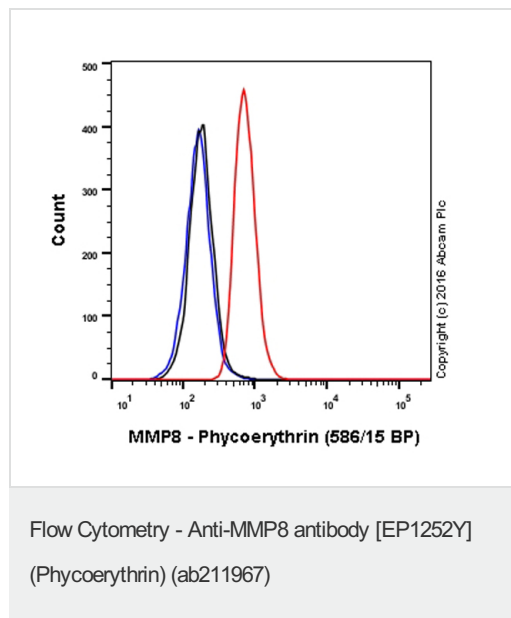
The application notes include recommended starting dilutions; optimal dilutions/concentrations should be determined by the end user.

Application	Abreviews	Notes
Flow Cyt		1/500. <b>The cellular localisation of this product has been verified in ICC/IF.</b>

## Target

<b>Function</b>	Can degrade fibrillar type I, II, and III collagens.
<b>Tissue specificity</b>	Neutrophils.
<b>Sequence similarities</b>	Belongs to the peptidase M10A family. Contains 4 hemopexin-like domains.
<b>Domain</b>	The conserved cysteine present in the cysteine-switch motif binds the catalytic zinc ion, thus inhibiting the enzyme. The dissociation of the cysteine from the zinc ion upon the activation-peptide release activates the enzyme.
<b>Cellular localization</b>	Cytoplasmic granule. Secreted > extracellular space > extracellular matrix. Stored in intracellular granules.

## Images



Overlay histogram showing THP-1 cells stained with ab211967 (red line). The cells were fixed with 4% formaldehyde (10 min) and then permeabilized with 90% methanol at -20°C for 15 min. The cells were then incubated in 1x PBS / 10% normal goat serum to block non-specific protein-protein interactions followed by the antibody (ab211967, 1/500 dilution) for 30 min at 22°C.

Isotype control antibody (black line) was rabbit IgG (monoclonal) Phycoerythrin (ab209478) used at the same concentration and conditions as the primary antibody. Unlabelled sample (blue line) was also used as a control.

Acquisition of >5,000 events were collected using a 50mW Yellow/Green laser (561nm) and 586/15 bandpass filter.

**Please note:** All products are "FOR RESEARCH USE ONLY. NOT FOR USE IN DIAGNOSTIC PROCEDURES"

## Our Abpromise to you: Quality guaranteed and expert technical support

- Replacement or refund for products not performing as stated on the datasheet

- Valid for 12 months from date of delivery
- Response to your inquiry within 24 hours
  
- We provide support in Chinese, English, French, German, Japanese and Spanish
- Extensive multi-media technical resources to help you
- We investigate all quality concerns to ensure our products perform to the highest standards

If the product does not perform as described on this datasheet, we will offer a refund or replacement. For full details of the Abpromise, please visit <https://www.abcam.com/abpromise> or contact our technical team.

### **Terms and conditions**

---

- Guarantee only valid for products bought direct from Abcam or one of our authorized distributors