




Product datasheet

Anti-MMS19 antibody ab214328

1 Image

Overview

Product name	Anti-MMS19 antibody
Description	Rabbit Polyclonal to MMS19
Host species	Rabbit
Tested applications	Suitable for: IHC-P
Species reactivity	Reacts with: Human Predicted to work with: Mouse, Rat 
Immunogen	Synthetic peptide within Human MMS19 aa 930-975 conjugated to keyhole limpet haemocyanin. The exact sequence is proprietary. Sequence: QLSTLSCLQPLLEAPQVMSLHVDTLVTKFLNLSSSPS MAVRIAAL Database link: Q96T76  Run BLAST with  Run BLAST with
Positive control	Human breast carcinoma tissue.

Properties

Form	Liquid
Storage instructions	Shipped at 4°C. Store at +4°C short term (1-2 weeks). Upon delivery aliquot. Store at -20°C long term. Avoid freeze / thaw cycle.
Storage buffer	Preservative: 0.09% Sodium azide Constituents: 1% BSA, 50% Glycerol
Purity	Protein A purified
Clonality	Polyclonal
Isotype	IgG

Applications

Our [Abpromise guarantee](#) covers the use of **ab214328** in the following tested applications.

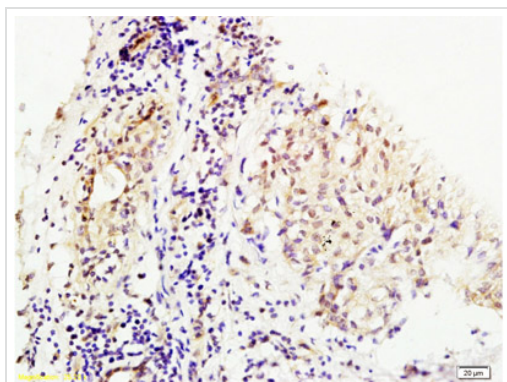
The application notes include recommended starting dilutions; optimal dilutions/concentrations should be determined by the end user.

Application	Abreviews	Notes
IHC-P		1/100 - 1/500.

Target

Function	May play a role in nucleotide excision repair (NER) and RNA polymerase II (POL II) transcription by interacting with ERCC2/XPD and ERCC3/XPB helicases, both subunits of NER-transcription factor TFIIH. May also function as a transcriptional coactivator of estrogen receptor (ER). May be involved in regulation of ER activity by bridging TFIIH with ER or may facilitate TFIIH-mediated phosphorylation of ER in specific promoters and cell types. As part of the mitotic spindle-associated MMXD complex it plays a role in chromosome segregation.
Tissue specificity	Ubiquitously expressed with higher expression in testis.
Sequence similarities	Belongs to the MET18/MMS19 family. Contains 7 HEAT repeats.
Cellular localization	Nucleus. Cytoplasm > cytoskeleton > spindle.

Images



Immunohistochemical analysis of formalin-fixed, paraffin-embedded human breast carcinoma tissue labeling MMS19 with ab214328 at 1/200 dilution followed by conjugation to the secondary antibody and DAB staining.

Immunohistochemistry (Formalin/PFA-fixed paraffin-embedded sections) - Anti-MMS19 antibody (ab214328)

Please note: All products are "FOR RESEARCH USE ONLY. NOT FOR USE IN DIAGNOSTIC PROCEDURES"

Our Abpromise to you: Quality guaranteed and expert technical support

- Replacement or refund for products not performing as stated on the datasheet
- Valid for 12 months from date of delivery
- Response to your inquiry within 24 hours
- We provide support in Chinese, English, French, German, Japanese and Spanish

- Extensive multi-media technical resources to help you
- We investigate all quality concerns to ensure our products perform to the highest standards

If the product does not perform as described on this datasheet, we will offer a refund or replacement. For full details of the Abpromise, please visit <https://www.abcam.com/abpromise> or contact our technical team.

Terms and conditions

- Guarantee only valid for products bought direct from Abcam or one of our authorized distributors