


Product datasheet

Anti-MMS21 antibody ab169355

2 Images

Overview

Product name	Anti-MMS21 antibody
Description	Mouse polyclonal to MMS21
Host species	Mouse
Tested applications	Suitable for: WB, ICC/IF
Species reactivity	Reacts with: Human Predicted to work with: Cow 
Immunogen	Full length protein corresponding to Human MMS21 aa 1-247. Sequence: MPGRSSSNSGSTGFISFSGVESALSSLKNFQACINSG MDTASSVALDLVE SQTEVSSEYSMDKAMVEFATLDRQLNHVYKAVQSTIN HVKEERPEKIPDL KLLVEKKFLALQSKNSDADFQNNEKVFQFKQQLKELK KQCGLQADREADG TEGVDEDIIVTQSQTNFTCPITKEEMKKPVKNKVCGHY EEDAIVRMIES RQKRKKKAYCPQIGCSHTDIRKSDLIQDEALRRAIENHN KKRHRHSE Run BLAST with Run BLAST with
Positive control	Recombinant Human MMS21 protein (ab132298) can be used as a positive control in WB. MMS21 transfected 293T cell lysate; HeLa cells
General notes	Previously labelled as NSE2.

Properties

Form	Liquid
Storage instructions	Shipped at 4°C. Store at +4°C short term (1-2 weeks). Upon delivery aliquot. Store at -20°C long term.
Storage buffer	pH: 7.20 Constituent: 100% PBS
Purity	Protein A purified

Clonality	Polyclonal
Isotype	IgG

Applications

Our [Abpromise guarantee](#) covers the use of **ab169355** in the following tested applications.

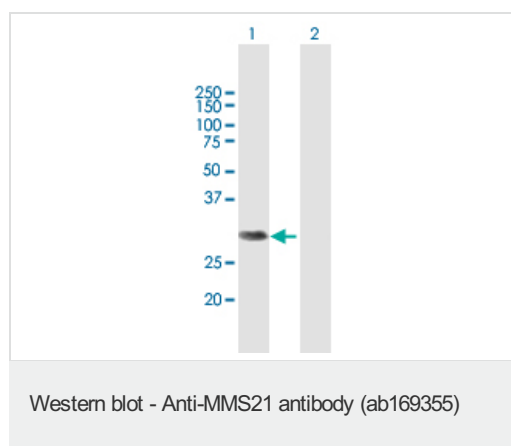
The application notes include recommended starting dilutions; optimal dilutions/concentrations should be determined by the end user.

Application	Abreviews	Notes
WB		Use a concentration of 1 µg/ml. Predicted molecular weight: 28 kDa.
ICC/IF		Use a concentration of 10 µg/ml.

Target

Function	E3 SUMO-protein ligase component of the SMC5-SMC6 complex, a complex involved in DNA double-strand breaks by homologous recombination. The complex may promote sister chromatid homologous recombination by recruiting the SMC1-SMC3 cohesin complex to double-strand breaks. Acts as a E3 ligase mediating SUMO attachment to various proteins such as SMC6L1 and TRAX, and maybe the cohesin components RAD21 and STAG2. SUMO protein-ligase activity is required for the prevention of DNA damage-induced apoptosis by facilitating DNA repair.
Pathway	Protein modification; protein sumoylation.
Sequence similarities	Belongs to the NSE2 family. Contains 1 SP-RING-type zinc finger.
Post-translational modifications	Sumoylated, possibly via autSUMOylation.
Cellular localization	Nucleus.

Images



All lanes : Anti-MMS21 antibody (ab169355) at 1 µg/ml

Lane 1 : MMS21 transfected 293T cell lysate

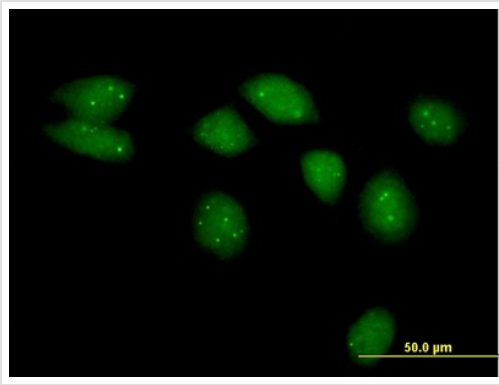
Lane 2 : Non-transfected 293T cell lysate

Lysates/proteins at 15 µl per lane.

Secondary

All lanes : Goat anti-Mouse IgG HRP at 1/2500 dilution

Predicted band size: 28 kDa



Immunofluorescent analysis of HeLa cells labeling MMS21 with ab169355 at 10 µg/ml.

Immunocytochemistry/ Immunofluorescence - Anti-MMS21 antibody (ab169355)

Please note: All products are "FOR RESEARCH USE ONLY. NOT FOR USE IN DIAGNOSTIC PROCEDURES"

Our Abpromise to you: Quality guaranteed and expert technical support

- Replacement or refund for products not performing as stated on the datasheet
- Valid for 12 months from date of delivery
- Response to your inquiry within 24 hours
- We provide support in Chinese, English, French, German, Japanese and Spanish
- Extensive multi-media technical resources to help you
- We investigate all quality concerns to ensure our products perform to the highest standards

If the product does not perform as described on this datasheet, we will offer a refund or replacement. For full details of the Abpromise, please visit <https://www.abcam.com/abpromise> or contact our technical team.

Terms and conditions

- Guarantee only valid for products bought direct from Abcam or one of our authorized distributors