

Product datasheet

Mouse Albumin Matched Antibody Pair Kit ab210890

Recombinant

2 Images

Overview

Product name	Mouse Albumin Matched Antibody Pair Kit
Detection method	Colorimetric
Assay type	ELISA set
Sensitivity	46.52 pg/ml
Range	125 pg/ml - 8000 pg/ml
Species reactivity	Reacts with: Mouse
Product overview	<p>Mouse Albumin Matched Antibody Pair Kits include a capture and a biotinylated detector antibody pair, along with a calibrated protein standard, suitable for sandwich ELISA. The Matched Antibody Pair Kit can be used to quantify native and recombinant mouse Albumin.</p> <p>Optimization of the kit reagents to sample type, immunoassay format or instrumentation may be required. Guidelines for use of this kit in a standard 96-well microplate sandwich ELISA using HRP/TMB system of colorimetric detection is described in this assay procedure for the purposes of quantification.</p> <p>Protocol information and tips on the use of the Matched Antibody Pair kits for sandwich ELISA can be found on our website. An accessory pack can be purchased which includes buffer reagents required to perform 10 x 96-well plate sandwich ELISAs (ab210905).</p> <p>For additional information on the performance of the antibody pair used in this kit, please see our equivalent SimpleStep ELISA kit ab207620. Please note that while the antibody pair is the same provided in the corresponding SimpleStep ELISA Kit, due to differences in their formulation, this antibody pair cannot be used with the consumables provided with our SimpleStep ELISA Kits.</p>
Tested applications	Suitable for: ELISA, IA
Platform	Reagents

Properties

Storage instructions Store at -20°C. Please refer to protocols.

Components	5 x 96 tests
Mouse Albumin Capture Antibody	2 x 50µg
Mouse Albumin Detector Antibody	2 x 12.5µg
Mouse Albumin Lyophilized Protein	2 vials

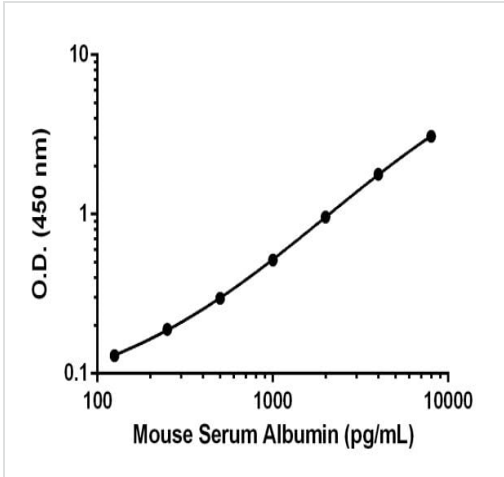
Function	Serum albumin, the main protein of plasma, has a good binding capacity for water, Ca(2+), Na(+), K(+), fatty acids, hormones, bilirubin and drugs. Its main function is the regulation of the colloidal osmotic pressure of blood. Major zinc transporter in plasma, typically binds about 80% of all plasma zinc.
Tissue specificity	Plasma.
Involvement in disease	Defects in ALB are a cause of familial dysalbuminemic hyperthyroxinemia (FDH) [MIM:103600]. FDH is a form of euthyroid hyperthyroxinemia that is due to increased affinity of ALB for T(4). It is the most common cause of inherited euthyroid hyperthyroxinemia in Caucasian population.
Sequence similarities	Belongs to the ALB/AFP/VDB family. Contains 3 albumin domains.
Post-translational modifications	Kenitra variant is partially O-glycosylated at Thr-620. It has two new disulfide bonds Cys-600 to Cys-602 and Cys-601 to Cys-606. Glycated in diabetic patients. Phosphorylation sites are present in the extracellular medium. Acetylated on Lys-223 by acetylsalicylic acid.
Cellular localization	Secreted.

Applications

The Abpromise guarantee Our [Abpromise guarantee](#) covers the use of ab210890 in the following tested applications. The application notes include recommended starting dilutions; optimal dilutions/concentrations should be determined by the end user.

Application	Abreviews	Notes
ELISA		Use at an assay dependent concentration.
IA		Use at an assay dependent concentration.





Images



Standard calibration curve. Background subtracted values are graphed.

To learn more about the advantages of recombinant antibodies see [here](#).

Powered by recombinant antibodies

 <p>Research with confidence Consistent and reproducible results</p>	 <p>Long-term and scalable supply Recombinant technology</p>
 <p>Success from the first experiment Confirmed specificity</p>	 <p>Ethical standards compliant Animal-free production</p>

Sandwich ELISA - Mouse Albumin Matched Antibody Pair Kit (ab210890)

Please note: All products are "FOR RESEARCH USE ONLY. NOT FOR USE IN DIAGNOSTIC PROCEDURES"

Our Abpromise to you: Quality guaranteed and expert technical support

- Replacement or refund for products not performing as stated on the datasheet
- Valid for 12 months from date of delivery

- Response to your inquiry within 24 hours
- We provide support in Chinese, English, French, German, Japanese and Spanish
- Extensive multi-media technical resources to help you
- We investigate all quality concerns to ensure our products perform to the highest standards

If the product does not perform as described on this datasheet, we will offer a refund or replacement. For full details of the Abpromise, please visit <https://www.abcam.com/abpromise> or contact our technical team.

Terms and conditions

- Guarantee only valid for products bought direct from Abcam or one of our authorized distributors