

Product datasheet

Mouse CD56 ELISA Kit (NCAM1) ab213851

1 Image

Overview

Product name Mouse CD56 ELISA Kit (NCAM1)

Detection method Colorimetric

Precision

Intra-assay

Sample	n	Mean	SD	CV%
1	16	6.7ng/ml	0.281	4.2%
2	16	17.2ng/ml	0.946	5.5%
3	16	28.6ng/ml	1.83	6.4%

Inter-assay

Sample	n	Mean	SD	CV%
1	24	8.3ng/ml	3.984	4.8%
2	24	19.5ng/ml	1.326	6.8%
3	24	32.5ng/ml	2.34	7.2%

Sample type Cell culture supernatant, Serum, Cell Lysate, Heparin Plasma, EDTA Plasma, Tissue Homogenate

Assay type Sandwich (quantitative)

Sensitivity < 20 pg/ml

Range 625 pg/ml - 40000 pg/ml

Assay time 3h 30m

Assay duration Multiple steps standard assay

Species reactivity **Reacts with:** Mouse

Product overview The Mouse CD56 Enzyme-Linked Immunosorbent Assay (ELISA) kit (NCAM1) (ab213851) is designed for the quantitative measurement of Mouse CD56 in cell culture supernatants, cell lysates, tissue homogenates, serum and plasma (heparin, EDTA).

The ELISA kit is based on standard sandwich enzyme-linked immune-sorbent assay technology. A monoclonal antibody from rat specific for CD56/NCAM1 has been pre-coated onto 96-well plates. Standards (Expression system for standard: NSO; Immunogen sequence: L20-T711) and test samples are added to the wells, a biotinylated detection polyclonal antibody from goat specific for CD56/NCAM1 is added subsequently and then followed by washing with PBS or TBS buffer. Avidin-Biotin-Peroxidase Complex is added and unbound conjugates are washed away with PBS or TBS buffer. HRP substrate TMB is used to visualize HRP enzymatic reaction. TMB is catalyzed by HRP to produce a blue color product that changed into yellow after adding acidic stop solution. The density of yellow is proportional to the Mouse CD56/NCAM1 amount of sample captured in plate.

Notes Neural Cell Adhesion Molecule, NCAM, also known as the cluster of differentiation CD56, is a hemophilic binding glycoprotein. It is a glycoprotein of the Immunoglobulin (Ig) super family. At least 27 alternatively spliced NCAM mRNAs are produced, giving a wide diversity of NCAM isoforms. The NCAM gene is located at 11q22-q23. This glycoprotein is mainly expressed on the surface of neurons, glia, skeletal muscle and natural killer cells. NCAM has been implicated as having a role in cell-cell adhesion, neurite outgrowth, synaptic plasticity, and learning and memory.

Tested applications **Suitable for:** Sandwich ELISA

Platform Pre-coated microplate (12 x 8 well strips)

Properties

Storage instructions Store at -20°C. Please refer to protocols.

Components	Identifier	1 x 96 tests
ABC Diluent Buffer	Blue Cap	1 x 12ml
Adhesive Plate Seal		4 units
Antibody Diluent Buffer	Green Cap	1 x 12ml
Anti-Mouse CD56 coated Microplate (12 x 8 wells)		1 unit
Avidin-Biotin-Peroxidase Complex (ABC)		1 x 130µl
Biotinylated anti- Mouse CD56 antibody		1 x 130µl
Lyophilized recombinant Mouse CD56 standard		2 vials
Sample Diluent Buffer	Green Cap	1 x 30ml
TMB Color Developing Agent	Black Cap	1 x 10ml
TMB Stop Solution	Yellow Cap	1 x 10ml

Function This protein is a cell adhesion molecule involved in neuron-neuron adhesion, neurite fasciculation, outgrowth of neurites, etc.

Sequence similarities Contains 2 fibronectin type-III domains.
Contains 5 Ig-like C2-type (immunoglobulin-like) domains.

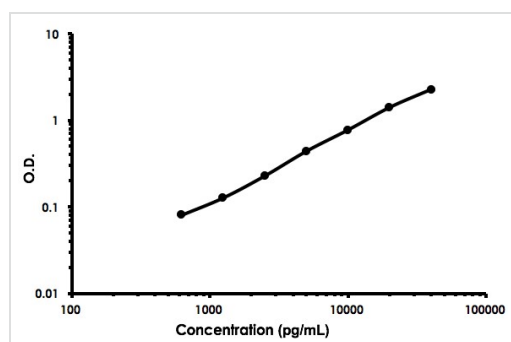
Applications

Our [Abpromise guarantee](#) covers the use of **ab213851** in the following tested applications.

The application notes include recommended starting dilutions; optimal dilutions/concentrations should be determined by the end user.

Application	Abreviews	Notes
Sandwich ELISA		Use at an assay dependent concentration.

Images



Mouse CD56 ELISA Kit (NCAM1) (ab213851) Standard Curve.

Mouse CD56 ELISA Kit (NCAM1) (ab213851)
Standard Curve.

Please note: All products are "FOR RESEARCH USE ONLY. NOT FOR USE IN DIAGNOSTIC PROCEDURES"

Our Abpromise to you: Quality guaranteed and expert technical support

- Replacement or refund for products not performing as stated on the datasheet
- Valid for 12 months from date of delivery
- Response to your inquiry within 24 hours
- We provide support in Chinese, English, French, German, Japanese and Spanish
- Extensive multi-media technical resources to help you
- We investigate all quality concerns to ensure our products perform to the highest standards

If the product does not perform as described on this datasheet, we will offer a refund or replacement. For full details of the Abpromise, please visit <https://www.abcam.com/abpromise> or contact our technical team.

Terms and conditions

- Guarantee only valid for products bought direct from Abcam or one of our authorized distributors