

Product datasheet

Mouse CXCL11 ELISA Kit (I-TAC) ab204519

Recombinant SimpleStep ELISA

[1 References](#) [4 Images](#)

Overview

Product name Mouse CXCL11 ELISA Kit (I-TAC)

Detection method Colorimetric

Precision

Intra-assay

Sample	n	Mean	SD	CV%
Overall	5			4.8%

Inter-assay

Sample	n	Mean	SD	CV%
Overall	3			4.7%

Sample type Cell culture supernatant, Serum, Plasma

Assay type Sandwich (quantitative)

Sensitivity 1.4 pg/ml

Range 7.8 pg/ml - 500 pg/ml

Recovery

Sample specific recovery

Sample type	Average %	Range
Cell culture supernatant	115	110% - 120%
Serum	113	107% - 116%
Hep Plasma	90	86% - 92%
EDTA Plasma	104	94% - 122%
Cit plasma	116	116% - 121%

Assay time 1h 30m

Assay duration	One step assay
Species reactivity	Reacts with: Mouse Does not react with: Sheep
Product overview	<p>Mouse CXCL11 ELISA Kit (I-TAC) (ab204519) is a single-wash 90 min sandwich ELISA designed for the quantitative measurement of CXCL11 (I-TAC) protein in cell culture supernatant, plasma, and serum. It uses our proprietary SimpleStep ELISA® technology. Quantitate Mouse CXCL11 (I-TAC) with 1.4 pg/ml sensitivity.</p> <p>SimpleStep ELISA® technology employs capture antibodies conjugated to an affinity tag that is recognized by the monoclonal antibody used to coat our SimpleStep ELISA® plates. This approach to sandwich ELISA allows the formation of the antibody-analyte sandwich complex in a single step, significantly reducing assay time. See the SimpleStep ELISA® protocol summary in the image section for further details. Our SimpleStep ELISA® technology provides several benefits:</p> <ul style="list-style-type: none"> - Single-wash protocol reduces assay time to 90 minutes or less - High sensitivity, specificity and reproducibility from superior antibodies - Fully validated in biological samples - 96-wells plate breakable into 12 x 8 wells strips <p>A 384-well SimpleStep ELISA® microplate (ab203359) is available to use as an alternative to the 96-well microplate provided with SimpleStep ELISA® kits.</p>
Notes	CXCL11 (I-TAC) is a chemokine for interleukin-activated T-cells but not unstimulated T-cells, neutrophils or monocytes. Induces calcium release in activated T-cells. Binds to CXCR3. May play an important role in CNS diseases which involve T-cell recruitment and in skin immune responses.
Platform	Pre-coated microplate (12 x 8 well strips)

Properties

Storage instructions Store at +4°C. Please refer to protocols.

Components	1 x 96 tests
10X Mouse CXLC11 Capture Antibody	1 x 600µl
10X Mouse CXLC11 Detector Antibody	1 x 600µl
10X Wash Buffer PT (ab206977)	1 x 20ml
Antibody Diluent 4BR	1 x 6ml
Mouse CXCL11 Lyophilized Recombinant Protein	2 vials
Plate Seals	1 unit
Sample Diluent 25BP	1 x 20ml

Components	1 x 96 tests
Sample Diluent NS (ab193972)	1 x 50ml
SimpleStep Pre-Coated 96-Well Microplate (ab206978)	1 unit
Stop Solution	1 x 12ml
TMB Development Solution	1 x 12ml

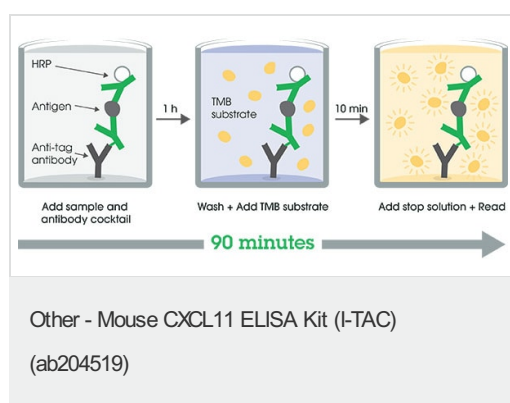
Function Chemotactic for interleukin-activated T-cells but not unstimulated T-cells, neutrophils or monocytes. Induces calcium release in activated T-cells. Binds to CXCR3. May play an important role in CNS diseases which involve T-cell recruitment. May play a role in skin immune responses.

Tissue specificity High levels in peripheral blood leukocytes, pancreas and liver astrocytes. Moderate levels in thymus, spleen and lung. Low levels in placenta, prostate and small intestine. Also found in epidermal basal layer keratinocytes in skin disorders.

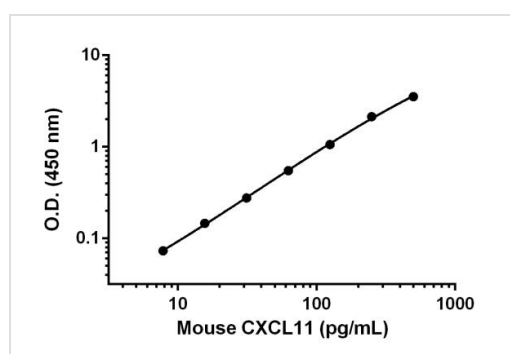
Sequence similarities Belongs to the intercrine alpha (chemokine CxC) family.

Cellular localization Secreted.

Images

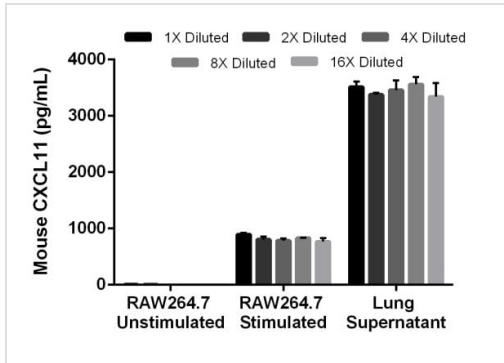


SimpleStep ELISA technology allows the formation of the antibody-antigen complex in one single step, reducing assay time to 90 minutes. Add samples or standards and antibody mix to wells all at once, incubate, wash, and add your final substrate. See protocol for a detailed step-by-step guide.



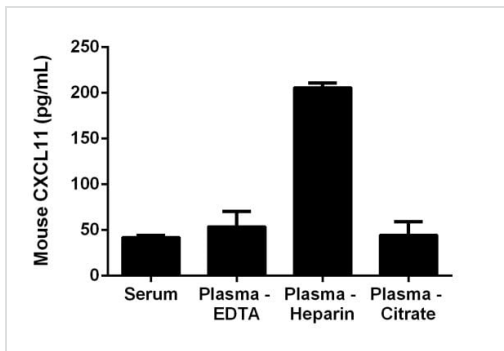
Background-subtracted data values (mean +/- SD) are graphed.

Example of CXCL11 standard curve in Sample Diluent NS.



The concentrations of CXCL11 were measured in duplicate and interpolated from the CXCL11 standard curve and corrected for sample dilution.

Interpolated concentrations of mouse CXCL11 in RAW264.7 cell culture supernatant (unstimulated and LPS stimulated) and mouse lung supernatant (stimulated with LPS and PMA).



Heparin appears to release erythrocyte bound CXCL11, resulting in higher concentration than plasma samples collected with EDTA or sodium citrate.

Interpolated concentrations of CXCL11 in mouse serum and plasma.

Please note: All products are "FOR RESEARCH USE ONLY. NOT FOR USE IN DIAGNOSTIC PROCEDURES"

Our Abpromise to you: Quality guaranteed and expert technical support

- Replacement or refund for products not performing as stated on the datasheet
- Valid for 12 months from date of delivery
- Response to your inquiry within 24 hours
- We provide support in Chinese, English, French, German, Japanese and Spanish
- Extensive multi-media technical resources to help you
- We investigate all quality concerns to ensure our products perform to the highest standards

If the product does not perform as described on this datasheet, we will offer a refund or replacement. For full details of the Abpromise, please visit <https://www.abcam.com/abpromise> or contact our technical team.

Terms and conditions

- Guarantee only valid for products bought direct from Abcam or one of our authorized distributors