

Product datasheet

Anti-Mouse IgG2b antibody [RM108] ab190482

Recombinant

1 Image

Overview

Product name	Anti-Mouse IgG2b antibody [RM108]
Description	Rabbit monoclonal [RM108] to Mouse IgG2b
Host species	Rabbit
Specificity	ab190482 reacts to the Fc region of mouse IgG2b. No cross reactivity with mouse IgG1, IgG2a, IgG3, IgM, IgA, IgE, human IgG, rat IgG, or goat IgG. The Fc region of ab190482 has been engineered to eliminate the binding of Fc receptor.
Tested applications	Suitable for: Flow Cyt, ELISA, WB, IHC-P, IP, ICC/IF
Species reactivity	Reacts with: Mouse
Immunogen	Full length protein corresponding to Mouse IgG2b. Database link: P01867
Positive control	Mouse IgG2b.

Properties

Form	Liquid
Storage instructions	Shipped at 4°C. Store at +4°C short term (1-2 weeks). Upon delivery aliquot. Store at -20°C long term. Avoid freeze / thaw cycle.
Storage buffer	Preservative: 0.09% Sodium azide Constituents: 1% BSA, 48% PBS, 50% Glycerol
Purity	Protein A purified
Purification notes	ab190482 is purified from an animal origin-free and protein-free culture supernatant.
Clonality	Monoclonal
Clone number	RM108
Isotype	IgG

Applications

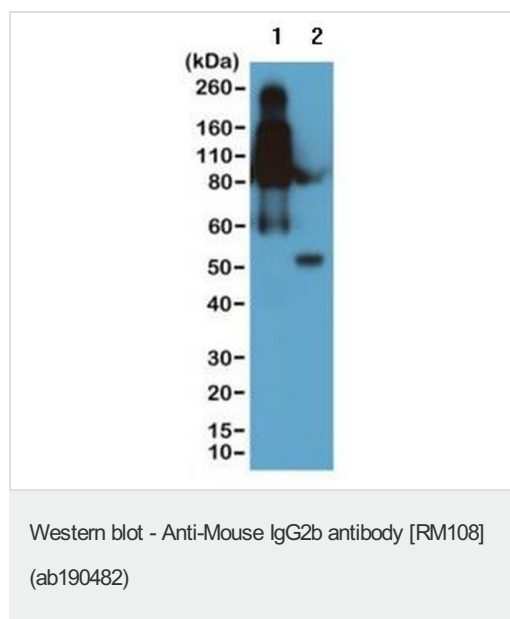
Our [Abpromise guarantee](#) covers the use of **ab190482** in the following tested applications.

The application notes include recommended starting dilutions; optimal dilutions/concentrations should be determined by the end user.

Application	Abreviews	Notes
Flow Cyt		Use at an assay dependent concentration.
ELISA		Use a concentration of 0.005 - 0.2 µg/ml.
WB		Use a concentration of 0.1 - 0.5 µg/ml.
IHC-P		Use a concentration of 0.5 - 2 µg/ml.
IP		Use at an assay dependent concentration.
ICC/IF		Use a concentration of 0.5 - 2 µg/ml.

Target

Images



All lanes : Anti-Mouse IgG2b antibody [RM108] (ab190482) at 0.2 µg/ml

Lane 1 : Mouse IgG2b, non-reduced

Lane 2 : Mouse IgG2b, reduced

Lysates/proteins at 0.02 µg per lane.

ab190482 reacted to non-reduced IgG2b (~150 kDa) much stronger than the reduced γ2b (~50 kDa).

Please note: All products are "FOR RESEARCH USE ONLY. NOT FOR USE IN DIAGNOSTIC PROCEDURES"

Our Abpromise to you: Quality guaranteed and expert technical support

- Replacement or refund for products not performing as stated on the datasheet
- Valid for 12 months from date of delivery
- Response to your inquiry within 24 hours
- We provide support in Chinese, English, French, German, Japanese and Spanish
- Extensive multi-media technical resources to help you

- We investigate all quality concerns to ensure our products perform to the highest standards

If the product does not perform as described on this datasheet, we will offer a refund or replacement. For full details of the Abpromise, please visit <https://www.abcam.com/abpromise> or contact our technical team.

Terms and conditions

- Guarantee only valid for products bought direct from Abcam or one of our authorized distributors