

Product datasheet

Mouse IgG2b, kappa monoclonal [7E10G10] - Isotype Control ab170192

3 References 3 Images

Overview

Product name	Mouse IgG2b, kappa monoclonal [7E10G10] - Isotype Control
Specificity	ab170192, mouse IgG2b Isotype Control Antibody was raised in mouse against a yeast-specific protein making it unsuitable for yeast experiments.
Tested applications	Suitable for: Flow Cyt, ICC/IF
General notes	<p>This antibody clone is manufactured by Abcam.</p> <p>Isotype controls are used to confirm that the primary antibody binding is specific and not a result of non-specific Fc receptor binding or other protein interactions. The isotype control antibody should match the primary antibody's host species, isotype, and possible conjugation. The control performed appropriately in all materials and platforms that were tested.</p> <p>This product was previously marketed under the MitoSciences sub-brand.</p> <p>If you require this antibody in a particular buffer formulation or a particular conjugate for your experiments, please contact orders@abcam.com or you can find further information here.</p> <p>The Life Science industry has been in the grips of a reproducibility crisis for a number of years. Abcam is leading the way in addressing this with our range of recombinant monoclonal antibodies and knockout edited cell lines for gold-standard validation. Please check that this product meets your needs before purchasing.</p> <p>If you have any questions, special requirements or concerns, please send us an inquiry and/or contact our Support team ahead of purchase. Recommended alternatives for this product can be found below, along with publications, customer reviews and Q&As</p>

Properties

Form	Liquid
Storage instructions	Shipped at 4°C. Store at -20°C.
Storage buffer	<p>pH: 7.5</p> <p>Preservative: 0.02% Sodium azide</p> <p>Constituent: HEPES buffered saline</p>
Purity	Ammonium Sulphate Precipitation
Clonality	Monoclonal

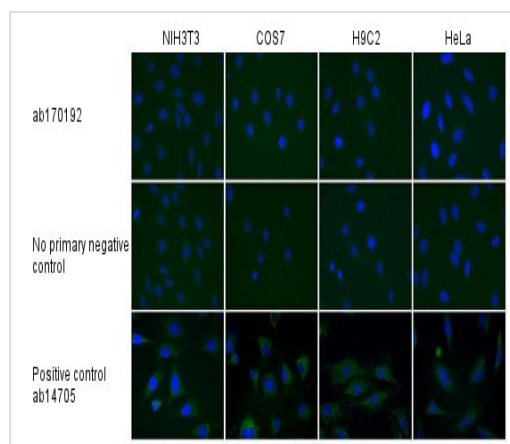
Clone number	7E10G10
Isotype	IgG2b
Light chain type	kappa

Applications

The Abpromise guarantee Our [Abpromise guarantee](#) covers the use of ab170192 in the following tested applications. The application notes include recommended starting dilutions; optimal dilutions/concentrations should be determined by the end user.

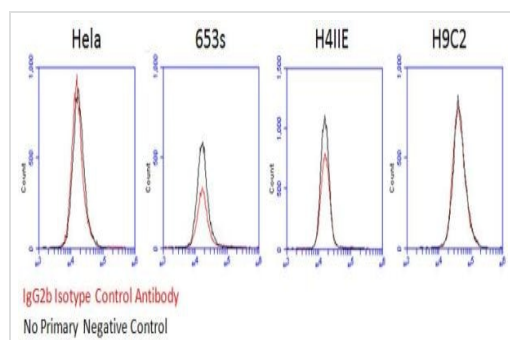
Application	Abreviews	Notes
Flow Cyt		Use a concentration of 1 µg/ml.
ICC/IF		Use a concentration of 1 µg/ml.

Images



Immunocytochemistry/ Immunofluorescence -
 Mouse IgG2b, kappa monoclonal [7E10G10] -
 Isotype Control (ab170192)

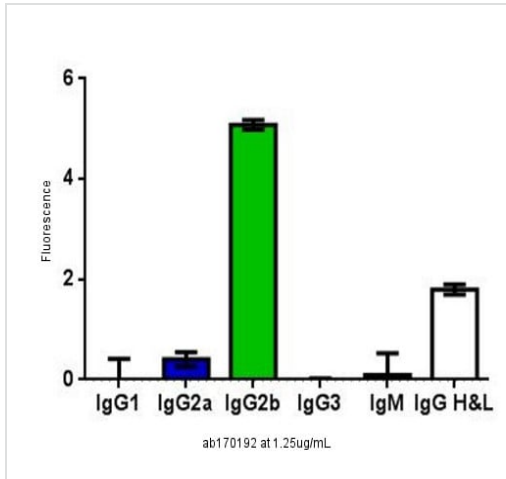
Immunofluorescent analysis of NIH 3T3, COS7, H9C2 and HeLa cells using ab170192 at 1 µg/ml (top); no primary antibody negative control (middle), and [ab14705](#) as a positive control (bottom). An Alexa Fluor® 488 conjugate with isotype specificity to the mouse antibody was used as a secondary antibody. The isotype control at 1 µg/mL shows no higher signal than the no primary negative control.



Flow Cytometry - Mouse IgG2b, kappa monoclonal [7E10G10] - Isotype Control (ab170192)

Flow cytometry experiments with 4% PFA fixed HeLa (human adenocarcinoma), 653s (mouse myeloma), H4IIE (rat hepatoma) and H9C2 (rat myoblast) were performed with the IgG2b Isotype Control Antibody (red) and no primary antibody negative control (black). An Alexa Fluor® 488 conjugate with isotype specificity to the mouse antibody was used as a secondary antibody.

The isotype control at 1 µg/mL shows no higher signal than the no primary negative control.



An isotyping ELISA was performed by coating a 96-well plate with 1.25 ug/mL ab170192 and detecting with Alexa Fluor® conjugates specific to mouse IgG1, IgG2a, IgG2b, IgG3, IgM and heavy and light chains (H&L) of IgG. This experiment verifies that the primary antibody's isotype is correct and that it is successfully bound by the secondary antibody.

ELISA - Mouse IgG2b, kappa monoclonal [7E10G10] - Isotype Control (ab170192)

Please note: All products are "FOR RESEARCH USE ONLY. NOT FOR USE IN DIAGNOSTIC PROCEDURES"

Our Abpromise to you: Quality guaranteed and expert technical support

- Replacement or refund for products not performing as stated on the datasheet
- Valid for 12 months from date of delivery
- Response to your inquiry within 24 hours
- We provide support in Chinese, English, French, German, Japanese and Spanish
- Extensive multi-media technical resources to help you
- We investigate all quality concerns to ensure our products perform to the highest standards

If the product does not perform as described on this datasheet, we will offer a refund or replacement. For full details of the Abpromise, please visit <https://www.abcam.com/abpromise> or contact our technical team.

Terms and conditions

- Guarantee only valid for products bought direct from Abcam or one of our authorized distributors