

Product datasheet

Mouse IL-10 ELISA Kit ab255729

Recombinant SimpleStep ELISA

[2 References](#) [4 Images](#)

Overview

Product name Mouse IL-10 ELISA Kit

Detection method Colorimetric

Precision

Intra-assay

Sample	n	Mean	SD	CV%
Serum	8			6.8%

Inter-assay

Sample	n	Mean	SD	CV%
Serum	3			8.8%

Sample type Cell culture supernatant, Serum, Hep Plasma, EDTA Plasma, Cit plasma

Assay type Sandwich (quantitative)

Sensitivity 19.8 pg/ml

Range 31.25 pg/ml - 2000 pg/ml

Recovery

Sample specific recovery

Sample type	Average %	Range
Cell culture supernatant	106	102% - 108%
Serum	109	105% - 118%
Hep Plasma	107	104% - 109%
EDTA Plasma	88	86% - 92%
Cit plasma	108	102% - 117%

Assay time 1h 30m

Assay duration One step assay

Species reactivity**Reacts with:** Mouse**Does not react with:** Cow**Product overview**

Mouse IL-10 ELISA Kit (ab255729) is a single-wash 90 min sandwich ELISA designed for the quantitative measurement of IL-10 protein in cell culture supernatant, cit plasma, edta plasma, hep plasma, and serum. It uses our proprietary SimpleStep ELISA® technology. Quantitate Mouse IL-10 with 19.8 pg/ml sensitivity.

SimpleStep ELISA® technology employs capture antibodies conjugated to an affinity tag that is recognized by the monoclonal antibody used to coat our SimpleStep ELISA® plates. This approach to sandwich ELISA allows the formation of the antibody-analyte sandwich complex in a single step, significantly reducing assay time. See the SimpleStep ELISA® protocol summary in the image section for further details. Our SimpleStep ELISA® technology provides several benefits:

- Single-wash protocol reduces assay time to 90 minutes or less
- High sensitivity, specificity and reproducibility from superior antibodies
- Fully validated in biological samples
- 96-wells plate breakable into 12 x 8 wells strips

A 384-well SimpleStep ELISA® microplate ([ab203359](#)) is available to use as an alternative to the 96-well microplate provided with SimpleStep ELISA® kits.

Notes

Interleukin 10 (IL-10) is a cytokine involved in immunoregulation through the promotion of Th2 response and inhibition of Th1 responses. It is produced by cells of hematopoietic origin, keratinocytes, placental cytotrophoblasts, and hepatic stellate cells.

Platform

Pre-coated microplate (12 x 8 well strips)

Properties**Storage instructions**

Store at +4°C. Please refer to protocols.

Components	1 x 96 tests
10X Mouse IL-10 Capture Antibody	1 x 600µl
10X Mouse IL-10 Detector Antibody	1 x 600µl
10X Wash Buffer PT (ab206977)	1 x 20ml
50X Cell Extraction Enhancer Solution (ab193971)	1 x 1ml
Antibody Diluent CPR	1 x 6ml
Mouse IL-10 Lyophilized Recombinant Protein	2 vials
Plate Seals	1 unit
Sample Diluent 75BS	1 x 20ml
Sample Diluent NS (ab193972)	1 x 12ml

Components	1 x 96 tests
SimpleStep Pre-Coated 96-Well Microplate (ab206978)	1 unit
Stop Solution	1 x 12ml
TMB Development Solution	1 x 12ml

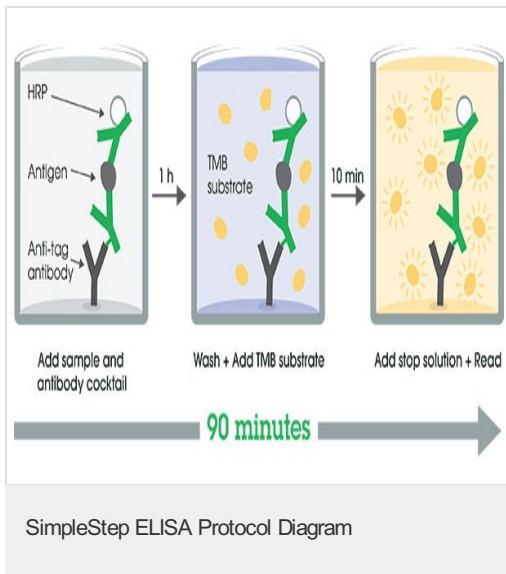
Function Inhibits the synthesis of a number of cytokines, including IFN-gamma, IL-2, IL-3, TNF and GM-CSF produced by activated macrophages and by helper T-cells.

Tissue specificity Produced by a variety of cell lines, including T-cells, macrophages, mast cells and other cell types.

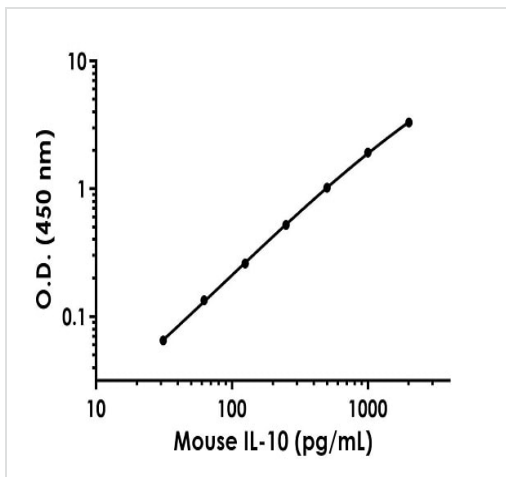
Sequence similarities Belongs to the IL-10 family.

Cellular localization Secreted.

Images

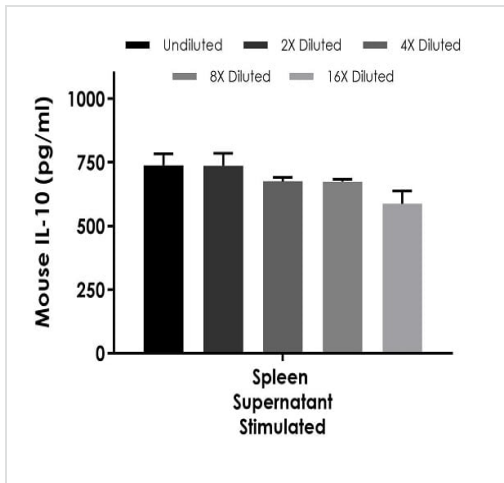


SimpleStep ELISA technology allows the formation of the antibody-antigen complex in one single step, reducing assay time to 90 minutes. Add samples or standards and antibody mix to wells all at once, incubate, wash, and add your final substrate. See protocol for a detailed step-by-step guide.



Example of mouse IL-10 standard curve in Sample Diluent 75BS + Enhancer.

The IL-10 standard curve was prepared as described in Section 10. Raw data values are shown in the table. Background-subtracted data values (mean +/- SD) are graphed.



Interpolated concentrations of native IL-10 in mouse spleen tissue culture supernatant samples treated for 1 day with 100 ng/ml LPS.

The concentrations of IL-10 were measured in duplicates, interpolated from the IL-10 standard curves and corrected for sample dilution. Undiluted samples are as follows: spleen supernatant 100%. The interpolated dilution factor corrected values are plotted (mean +/- SD, n=2). The mean IL-10 concentration was determined to be 682.52 pg/mL in spleen supernatant 100%.

Powered by
recombinant antibodies

Research with confidence
Consistent and reproducible results

Long-term and scalable supply
Recombinant technology

Success from the first experiment
Confirmed specificity

Ethical standards compliant
Animal-free production

Sandwich ELISA - Mouse IL-10 ELISA Kit
(ab255729)

To learn more about the advantages of recombinant antibodies see [here](#).

Please note: All products are "FOR RESEARCH USE ONLY. NOT FOR USE IN DIAGNOSTIC PROCEDURES"

Our Abpromise to you: Quality guaranteed and expert technical support

- Replacement or refund for products not performing as stated on the datasheet
- Valid for 12 months from date of delivery
- Response to your inquiry within 24 hours
- We provide support in Chinese, English, French, German, Japanese and Spanish
- Extensive multi-media technical resources to help you
- We investigate all quality concerns to ensure our products perform to the highest standards

If the product does not perform as described on this datasheet, we will offer a refund or replacement. For full details of the Abpromise, please visit <https://www.abcam.com/abpromise> or contact our technical team.

Terms and conditions

- Guarantee only valid for products bought direct from Abcam or one of our authorized distributors