

Product datasheet

Mouse IL-6 ELISA Kit ab100713

★★★★★ 1 Abreviews 45 References 5 Images

Overview

Product name	Mouse IL-6 ELISA Kit
Detection method	Colorimetric
Sample type	Cell culture extracts, Tissue Extracts
Assay type	Sandwich (quantitative)
Sensitivity	< 2 pg/ml
Range	0.82 pg/ml - 600 pg/ml
Recovery	93 %

Sample specific recovery

Sample type	Average %	Range
Cell culture extracts	94.53	84% - 104%
Tissue Extracts	93.39	83% - 103%

Assay duration Multiple steps standard assay

Species reactivity **Reacts with:** Mouse

Product overview Abcam's IL-6 Mouse ELISA (Enzyme-Linked Immunosorbent Assay) kit is an *in vitro* enzyme-linked immunosorbent assay for the quantitative measurement of mouse IL-6 in cell lysates and tissue lysates.

This assay employs an antibody specific for mouse IL-6 coated on a 96-well plate. Standards and samples are pipetted into the wells and IL-6 present in a sample is bound to the wells by the immobilized antibody. The wells are washed and biotinylated anti-mouse IL-6 antibody is added. After washing away unbound biotinylated antibody, HRP-conjugated streptavidin is pipetted to the wells. The wells are again washed, a TMB substrate solution is added to the wells and color develops in proportion to the amount of IL-6 bound. The Stop Solution changes the color from blue to yellow, and the intensity of the color is measured at 450 nm.

Notes Abcam has not and does not intend to apply for the REACH Authorisation of customers' uses of products that contain European Authorisation list (Annex XIV) substances. It is the responsibility of our customers to check the necessity of application of REACH Authorisation, and any other relevant authorisations, for their intended uses.

Platform Microplate

Properties

Storage instructions Store at -20°C. Please refer to protocols.

Components	1 x 96 tests
200X HRP-Streptavidin Concentrate	1 x 200µl
20X Wash Buffer	1 x 25ml
2X Cell Lysis Buffer	1 x 5ml
5X Assay Diluent	1 x 15ml
5X Sample Diluent Buffer	1 x 10ml
Biotinylated anti-Mouse IL-6	2 vials
IL-6 Microplate (12 x 8 wells)	1 unit
Recombinant mouse IL-6 Standard (lyophilized)	2 vials
Stop Solution	1 x 8ml
TMB One-Step Substrate Reagent	1 x 12ml

Function Cytokine with a wide variety of biological functions. It is a potent inducer of the acute phase response. Plays an essential role in the final differentiation of B-cells into Ig-secreting cells. Involved in lymphocyte and monocyte differentiation. It induces myeloma and plasmacytoma growth and induces nerve cells differentiation. Acts on B-cells, T-cells, hepatocytes, hematopoietic progenitor cells and cells of the CNS. Also acts as a myokine. It is discharged into the bloodstream after muscle contraction and acts to increase the breakdown of fats and to improve insulin resistance.

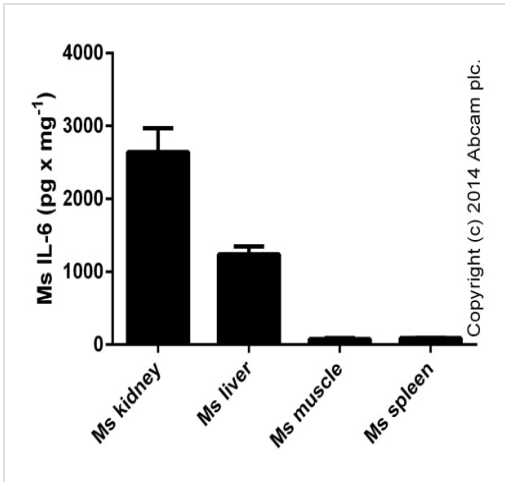
Involvement in disease Genetic variations in IL6 are associated with susceptibility to rheumatoid arthritis systemic juvenile (RASJ) [MIM:604302]. An inflammatory articular disorder with systemic-onset beginning before the age of 16. It represents a subgroup of juvenile arthritis associated with severe extraarticular features and occasionally fatal complications. During active phases of the disorder, patients display a typical daily spiking fever, an evanescent macular rash, lymphadenopathy, hepatosplenomegaly, serositis, myalgia and arthritis.
Note=A IL6 promoter polymorphism is associated with a lifetime risk of development of Kaposi sarcoma in HIV-infected men.

Sequence similarities Belongs to the IL-6 superfamily.

Post-translational modifications N- and O-glycosylated.

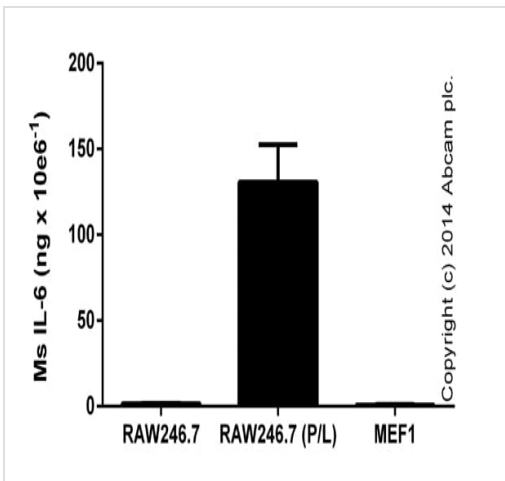
Cellular localization Secreted.

Images



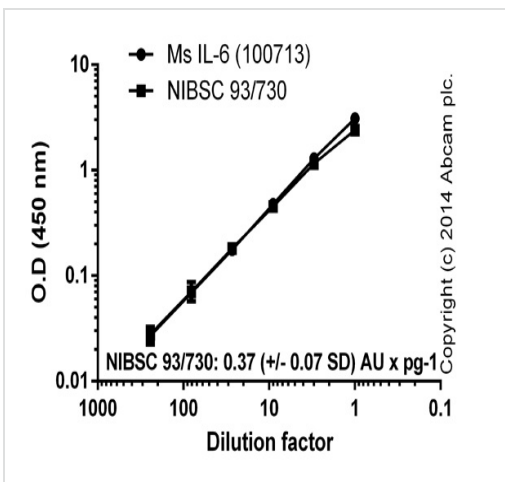
ELISA:IL-6 (Interleukin-6) Mouse ELISA Kit
(ab100713)

IL-6 measured in mouse tissue lysates prepared with RIPA buffer and sonicated in an ice-cold water bath for 12 intervals of a total of 3.5 minutes. 0.02-1 mg protein x mL⁻¹ were tested, results shown as IL-6 per mg of extracted protein (duplicates +/- SD).



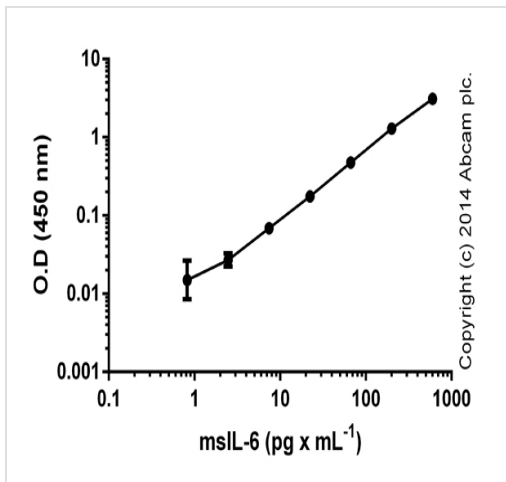
ELISA:IL-6 (Interleukin-6) Mouse ELISA Kit
(ab100713)

IL-6 measured in RIPA lysates from control cells, or cells stimulated for 24 hours with 50 ng x mL⁻¹ of PMA (ab 120297), with the addition of 1 ug x mL⁻¹ of LPS (Sigma) (P/L) for the last 6 hours. Samples were diluted and tested in the range of 1e4-5e5 cells x mL⁻¹, results expressed per million cells; duplicates +/- SD).



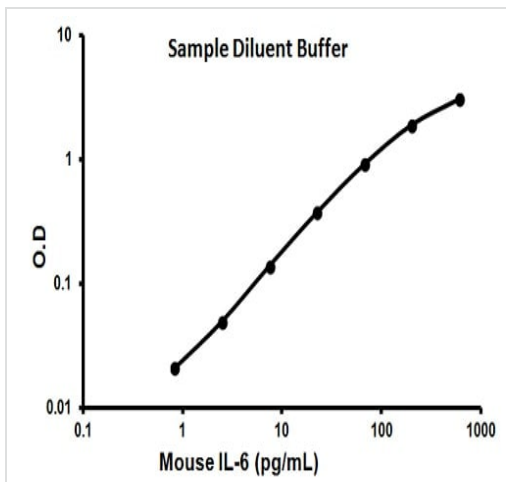
ELISA:IL-6 (Interleukin-6) Mouse ELISA Kit
(ab100713)

Dilution curves of mouse IL-6 (ab100713) and NIBSC standard (93/730). One pg of standard mouse IL-6 corresponds to 0.37 (+/- 0.07) AU. Background signal subtracted (duplicates; +/- SD).



Standard curve of mouse IL-6 with background signal subtracted (duplicates; +/- SD).

ELISA:IL-6 (Interleukin-6) Mouse ELISA Kit
(ab100713)



Representative standard curve using ab100713

Typical standard curve

Please note: All products are "FOR RESEARCH USE ONLY. NOT FOR USE IN DIAGNOSTIC PROCEDURES"

Our Abpromise to you: Quality guaranteed and expert technical support

- Replacement or refund for products not performing as stated on the datasheet
- Valid for 12 months from date of delivery
- Response to your inquiry within 24 hours
- We provide support in Chinese, English, French, German, Japanese and Spanish
- Extensive multi-media technical resources to help you
- We investigate all quality concerns to ensure our products perform to the highest standards

If the product does not perform as described on this datasheet, we will offer a refund or replacement. For full details of the Abpromise, please visit <https://www.abcam.com/abpromise> or contact our technical team.

Terms and conditions

- Guarantee only valid for products bought direct from Abcam or one of our authorized distributors