

Product datasheet

Mouse MDC Matched Antibody Pair Kit ab211760

Recombinant

2 Images

Overview

Product name	Mouse MDC Matched Antibody Pair Kit
Detection method	Colorimetric
Assay type	ELISA set
Sensitivity	1.1 pg/ml
Range	7.81 pg/ml - 500 pg/ml
Species reactivity	Reacts with: Mouse
Product overview	<p>Mouse MDC Matched Antibody Pair Kits include a capture and a biotinylated detector antibody pair, along with a calibrated protein standard, suitable for sandwich ELISA. The Matched Antibody Pair Kit can be used to quantify native and recombinant mouse MDC.</p> <p>Optimization of the kit reagents to sample type, immunoassay format or instrumentation may be required. Guidelines for use of this kit in a standard 96-well microplate sandwich ELISA using HRP/TMB system of colorimetric detection is described in this assay procedure for the purposes of quantification.</p> <p>Protocol information and tips on the use of the Matched Antibody Pair kits for sandwich ELISA can be found on our website. An accessory pack can be purchased which includes buffer reagents required to perform 10 x 96-well plate sandwich ELISAs (ab210905).</p> <p>For additional information on the performance of the antibody pair used in this kit, please see our equivalent SimpleStep ELISA kit ab204525. Please note that while the antibody pair is the same provided in the corresponding SimpleStep ELISA Kit, due to differences in their formulation, this antibody pair cannot be used with the consumables provided with our SimpleStep ELISA Kits.</p>
Tested applications	Suitable for: ELISA, IA
Platform	Reagents

Properties

Storage instructions Store at -20°C. Please refer to protocols.

Components	10 x 96 tests	5 x 96 tests
Mouse MDC Capture Antibody	2 x 50µg	1 x 50µg
Mouse MDC Detector Antibody	2 x 12.5µg	1 x 12.5µg
Mouse MDC Lyophilized Protein	2 vials	1 vial

Function May play a role in the trafficking of activated/effector T-lymphocytes to inflammatory sites and other aspects of activated T-lymphocyte physiology. Chemotactic for monocytes, dendritic cells and natural killer cells. Mild chemoattractant for primary activated T-lymphocytes and a potent chemoattractant for chronically activated T-lymphocytes but has no chemoattractant activity for neutrophils, eosinophils, and resting T-lymphocytes. Binds to CCR4. Processed forms MDC(3-69), MDC(5-69) and MDC(7-69) seem not be active.

Tissue specificity Highly expressed in macrophage and in monocyte-derived dendritic cells, and thymus. Also found in lymph node, appendix, activated monocytes, resting and activated macrophages. Lower expression in lung and spleen. Very weak expression in small intestine. In lymph node expressed in a mature subset of Langerhans' cells (CD1a+ and CD83+). Expressed in Langerhans' cell histiocytosis but not in dermatopathic lymphadenopathy. Expressed in atopic dermatitis, allergic contact dermatitis skin, and psoriasis, in both the epidermis and dermis.

Sequence similarities Belongs to the intercrine beta (chemokine CC) family.

Post-translational modifications The N-terminal processed forms MDC(3-69), MDC(5-69) and MDC(7-69) are produced by proteolytic cleavage after secretion from monocyte derived dendrocytes.

Cellular localization Secreted.

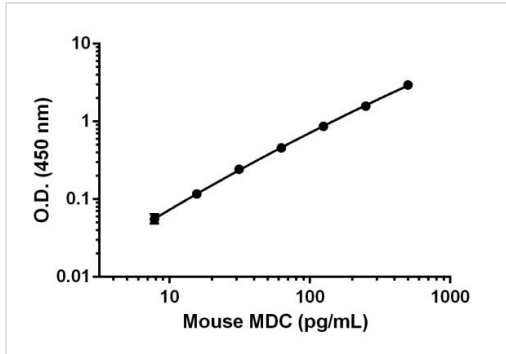
Applications

Our [Abpromise guarantee](#) covers the use of **ab211760** in the following tested applications.

The application notes include recommended starting dilutions; optimal dilutions/concentrations should be determined by the end user.

Application	Abreviews	Notes
ELISA		Use at an assay dependent concentration.
IA		Use at an assay dependent concentration.

Images



Standard calibration curve. Background subtracted values are graphed.

**Powered by
recombinant antibodies**

Research with confidence
Consistent and reproducible results

Long-term and scalable supply
Recombinant technology

Success from the first experiment
Confirmed specificity

Ethical standards compliant
Animal-free production

Sandwich ELISA - Mouse MDC Matched Antibody Pair Kit (ab211760)

To learn more about the advantages of recombinant antibodies see [here](#).

Please note: All products are "FOR RESEARCH USE ONLY. NOT FOR USE IN DIAGNOSTIC PROCEDURES"

Our Abpromise to you: Quality guaranteed and expert technical support

- Replacement or refund for products not performing as stated on the datasheet
- Valid for 12 months from date of delivery
- Response to your inquiry within 24 hours
- We provide support in Chinese, English, French, German, Japanese and Spanish
- Extensive multi-media technical resources to help you

- We investigate all quality concerns to ensure our products perform to the highest standards

If the product does not perform as described on this datasheet, we will offer a refund or replacement. For full details of the Abpromise, please visit <https://www.abcam.com/abpromise> or contact our technical team.

Terms and conditions

- Guarantee only valid for products bought direct from Abcam or one of our authorized distributors