

## Product datasheet

# Mouse Myelin oligodendrocyte glycoprotein ELISA Kit (MOG) ab282304

Recombinant SimpleStep ELISA

[4 Images](#)

### Overview

**Product name** Mouse Myelin oligodendrocyte glycoprotein ELISA Kit (MOG)

**Detection method** Colorimetric

**Precision**

Intra-assay

Sample	n	Mean	SD	CV%
Extract	8			7.8%

Inter-assay

Sample	n	Mean	SD	CV%
Extract	3			12.3%

**Sample type** Tissue Extracts

**Assay type** Sandwich (quantitative)

**Sensitivity** 1.25 pg/ml

**Range** 7.81 pg/ml - 500 pg/ml

**Recovery**

Sample specific recovery

Sample type	Average %	Range
Tissue Extracts	101	94% - 108%

**Assay time** 1h 30m

**Assay duration** One step assay

**Species reactivity** **Reacts with:** Mouse

**Product overview**

Mouse Myelin oligodendrocyte glycoprotein ELISA kit (ab282304) is a single-wash 90 min sandwich ELISA designed for the quantitative measurement of Mouse Myelin oligodendrocyte glycoprotein protein in human cell and tissue extract samples. It uses our proprietary SimpleStep ELISA® technology. Quantitate Mouse Myelin oligodendrocyte glycoprotein with 1.25 pg/mL

sensitivity.

SimpleStep ELISA® technology employs capture antibodies conjugated to an affinity tag that is recognized by the monoclonal antibody used to coat our SimpleStep ELISA® plates. This approach to sandwich ELISA allows the formation of the antibody-analyte sandwich complex in a single step, significantly reducing assay time. See the SimpleStep ELISA® protocol summary in the image section for further details. Our SimpleStep ELISA® technology provides several benefits:

- Single-wash protocol reduces assay time to 90 minutes or less
- High sensitivity, specificity and reproducibility from superior antibodies
- Fully validated in biological samples
- 96-wells plate breakable into 12 x 8 wells strips

A 384-well SimpleStep ELISA® microplate ([ab203359](#)) is available to use as an alternative to the 96-well microplate provided with SimpleStep ELISA® kits.

## Notes

Myelin oligodendrocyte glycoprotein (MOG), a 16 kDa protein, mediates homophilic cell-cell adhesion. MOG is a component of the myelin sheath and may be involved in completion and/or maintenance of the myelin sheath and in cell-cell communication. Research indicates MOG acts as a receptor for the rubella virus. MOG shares 86%, 93%, 87%, and 85% sequence homology with human, rat, cow, and monkey, respectively.

Abcam has not and does not intend to apply for the REACH Authorisation of customers' uses of products that contain European Authorisation list (Annex XIV) substances.

It is the responsibility of our customers to check the necessity of application of REACH Authorisation, and any other relevant authorisations, for their intended uses.

## Platform

Pre-coated microplate (12 x 8 well strips)

## Properties

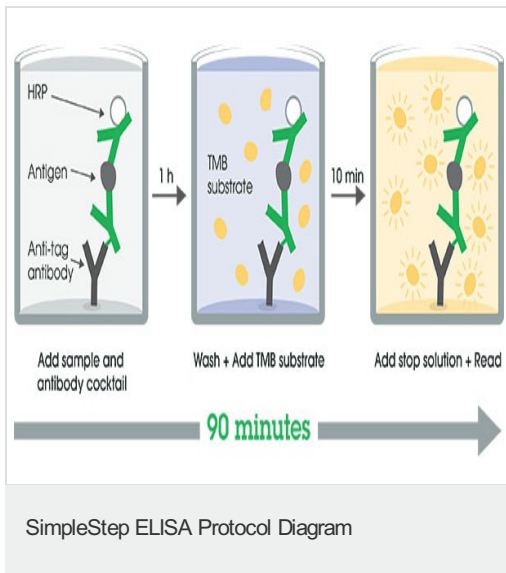
**Storage instructions** Store at +4°C. Please refer to protocols.

Components	1 x 96 tests
10X Mouse Myelin oligodendrocyte glycoprotein (MOG) Capture Antibody	1 x 600µl
10X Mouse Myelin oligodendrocyte glycoprotein (MOG) Detector Antibody	1 x 600µl
10X Wash Buffer PT (ab206977)	1 x 20ml
5X Cell Extraction Buffer PTR (ab193970)	1 x 10ml
Antibody Diluent 5BI	1 x 6ml
Mouse Myelin oligodendrocyte glycoprotein (MOG) Lyophilized Recombinant Protein	2 vials
Plate Seals	1 unit
Sample Diluent NS (ab193972)	1 x 12ml

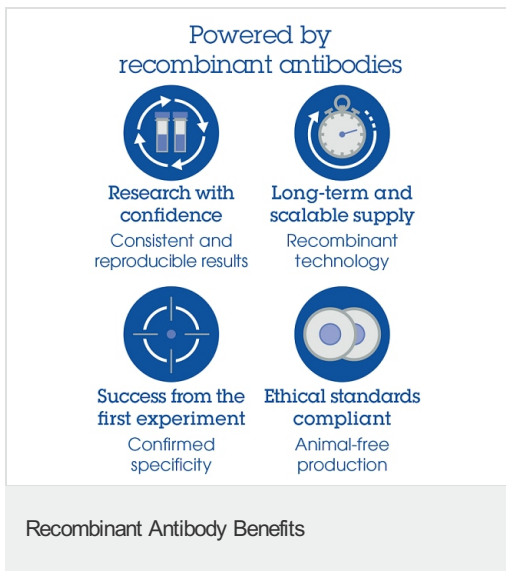
Components	1 x 96 tests
SimpleStep Pre-Coated 96-Well Microplate (ab206978)	1 unit
Stop Solution	1 x 12ml
TMB Development Solution	1 x 12ml

<b>Function</b>	Mediates homophilic cell-cell adhesion (By similarity). Minor component of the myelin sheath. May be involved in completion and/or maintenance of the myelin sheath and in cell-cell communication.
<b>Tissue specificity</b>	Found exclusively in the CNS, where it is localized on the surface of myelin and oligodendrocyte cytoplasmic membranes.
<b>Sequence similarities</b>	Belongs to the immunoglobulin superfamily. BTN/MOG family. Contains 1 Ig-like V-type (immunoglobulin-like) domain.
<b>Cellular localization</b>	Cell membrane.

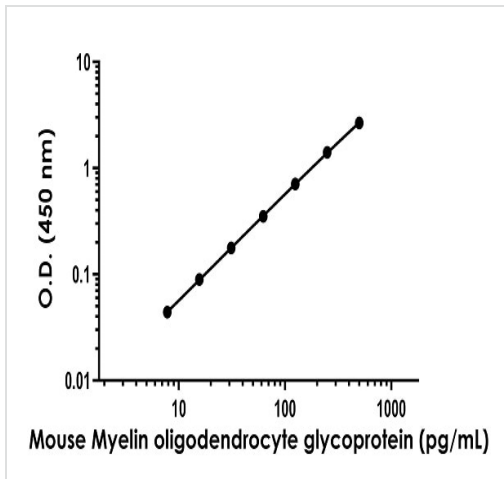
## Images



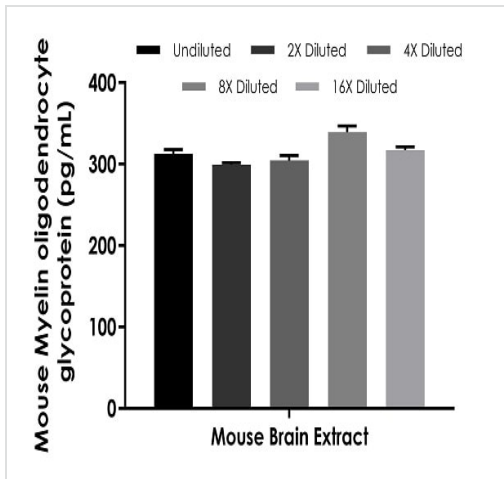
SimpleStep ELISA technology allows the formation of the antibody-antigen complex in one single step, reducing assay time to 90 minutes. Add samples or standards and antibody mix to wells all at once, incubate, wash, and add your final substrate. See protocol for a detailed step-by-step guide.



To learn more about the advantages of recombinant antibodies see [here](#).



Example of mouse Myelin oligodendrocyte glycoprotein standard curve in 1X Cell Extraction Buffer PTR.



Interpolated concentrations of native Myelin oligodendrocyte glycoprotein in mouse brain tissue extract based on a 2.5 µg/mL extract load.

The concentrations of Myelin oligodendrocyte glycoprotein were measured in duplicate and interpolated from the Myelin oligodendrocyte glycoprotein standard curve and corrected for sample dilution. The interpolated dilution factor corrected values are plotted (mean +/- SD, n=2). The mean Myelin oligodendrocyte glycoprotein concentration was determined to be 314.5 pg/mL in mouse brain extract.

**Please note:** All products are "FOR RESEARCH USE ONLY. NOT FOR USE IN DIAGNOSTIC PROCEDURES"

### Our Abpromise to you: Quality guaranteed and expert technical support

- Replacement or refund for products not performing as stated on the datasheet
- Valid for 12 months from date of delivery
- Response to your inquiry within 24 hours
- We provide support in Chinese, English, French, German, Japanese and Spanish
- Extensive multi-media technical resources to help you
- We investigate all quality concerns to ensure our products perform to the highest standards

If the product does not perform as described on this datasheet, we will offer a refund or replacement. For full details of the Abpromise, please visit <https://www.abcam.com/abpromise> or contact our technical team.

## **Terms and conditions**

---

- Guarantee only valid for products bought direct from Abcam or one of our authorized distributors