

Product datasheet

Mouse Syndecan-1 ELISA kit ab273165

1 Image

Overview

Product name Mouse Syndecan-1 ELISA kit

Detection method Colorimetric

Precision

Intra-assay

Sample	n	Mean	SD	CV%
Various				6.3%

Inter-assay

Sample	n	Mean	SD	CV%
Various				7.6%

Sample type Cell culture supernatant, Serum, Plasma, Other biological fluids

Assay type Sandwich

Sensitivity < 0.35 ng/ml

Range 16 - 0.5

Assay duration Multiple steps standard assay

Species reactivity **Reacts with:** Mouse

Predicted to work with: Human

Product overview

Mouse Syndecan-1 ELISA kit (ab273165) is for the in-vitro qualitative and quantitative determination of Syndecan-1 in cell culture supernatants, buffered solutions or mouse serum, plasma, or other body fluids. This assay will recognize both natural and recombinant mouse Syndecan-1.

A capture antibody highly specific for Syndecan-1 has been coated to the wells of the microtiter strip plate provided during manufacture.

Binding of Syndecan-1 in samples and known standards to the capture antibodies and subsequent binding of the biotinylated anti-Syndecan-1 secondary antibody to the analyte is completed during the same incubation period. Any excess unbound analyte and secondary antibody is then removed.

The HRP conjugate solution is then added to every well including the zero wells, following incubation excess conjugate is removed by careful washing.

A chromogen substrate is added to the wells resulting in the progressive development of a blue coloured complex with the conjugate. The colour development is then stopped by the addition of acid turning the resultant final product yellow. The intensity of the produced coloured complex is directly proportional to the concentration of Syndecan-1 present in the samples and standards.

The absorbance of the colour complex is then measured and the generated OD values for each standard are plotted against expected concentration forming a standard curve. This standard curve can then be used to accurately determine the concentration of Syndecan-1 in any sample tested.

Platform Microplate (12 x 8 well strips)

Properties

Storage instructions Store at +4°C. Please refer to protocols.

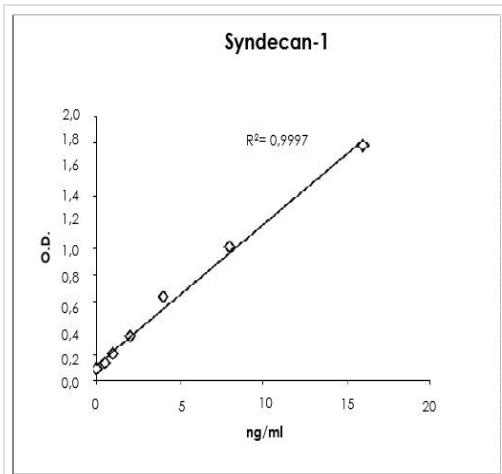
Components	1 x 96 tests
Biotinylated Antibody diluent	1 x 7ml
Biotinylated Antibody Syndecan-1	1 x 400µl
HRP Diluent	1 x 12ml
Plastic Plate Cover	2 units
Standard diluent Buffer	1 x 15ml
Stop Reagent	1 x 11ml
Streptavidin-HRP	2 x 5µl
Syndecan-1 Coated Microwell strips	1 unit
Syndecan-1 Standard	2 vials
TMB Substrate	1 x 11ml
Wash Buffer	1 x 10ml

Function Cell surface proteoglycan that bears both heparan sulfate and chondroitin sulfate and that links the cytoskeleton to the interstitial matrix.

Sequence similarities Belongs to the syndecan proteoglycan family.

Cellular localization Membrane.

Images



Example Data

Typical standard curve – data provided **for demonstration purposes only**. A new standard curve must be generated for each assay performed.

Example of Mouse Syndecan-1 ELISA kit standard curve.

Please note: All products are "FOR RESEARCH USE ONLY. NOT FOR USE IN DIAGNOSTIC PROCEDURES"

Our Abpromise to you: Quality guaranteed and expert technical support

- Replacement or refund for products not performing as stated on the datasheet
- Valid for 12 months from date of delivery
- Response to your inquiry within 24 hours
- We provide support in Chinese, English, French, German, Japanese and Spanish
- Extensive multi-media technical resources to help you
- We investigate all quality concerns to ensure our products perform to the highest standards

If the product does not perform as described on this datasheet, we will offer a refund or replacement. For full details of the Abpromise, please visit <https://www.abcam.com/abpromise> or contact our technical team.

Terms and conditions

- Guarantee only valid for products bought direct from Abcam or one of our authorized distributors