

Product datasheet

Anti-MPP1 antibody [EPR5865] ab108528

KO VALIDATED Recombinant RabMAB

[1 References](#) [3 Images](#)

Overview

Product name	Anti-MPP1 antibody [EPR5865]
Description	Rabbit monoclonal [EPR5865] to MPP1
Host species	Rabbit
Tested applications	Suitable for: WB Unsuitable for: Flow Cyt, ICC, IHC-P or IP
Species reactivity	Reacts with: Human Predicted to work with: Mouse
Immunogen	Synthetic peptide. This information is proprietary to Abcam and/or its suppliers.
Positive control	WB: K562, 293T, and Jurkat cell lysates
General notes	<p>This product is a recombinant monoclonal antibody, which offers several advantages including:</p> <ul style="list-style-type: none"> - High batch-to-batch consistency and reproducibility - Improved sensitivity and specificity - Long-term security of supply - Animal-free production <p>For more information see here.</p> <p>Our RabMAB[®] technology is a patented hybridoma-based technology for making rabbit monoclonal antibodies. For details on our patents, please refer to RabMAB[®] patents.</p> <p>Rat: We have preliminary internal testing data to indicate this antibody may not react with this species. Please contact us for more information.</p>

Properties

Form	Liquid
Storage instructions	Shipped at 4°C. Store at -20°C.
Storage buffer	pH: 7.20 Preservative: 0.05% Sodium azide Constituents: 0.1% BSA, 40% Glycerol (glycerin, glycerine), 9.85% Tris glycine, 50% Tissue culture supernatant
Purity	Tissue culture supernatant

Clonality	Monoclonal
Clone number	EPR5865
Isotype	IgG

Applications

The Abpromise guarantee Our [Abpromise guarantee](#) covers the use of ab108528 in the following tested applications. The application notes include recommended starting dilutions; optimal dilutions/concentrations should be determined by the end user.

Application	Abreviews	Notes
WB		1/1000 - 1/10000. Predicted molecular weight: 52 kDa.

Application notes Is unsuitable for Flow Cyt, ICC, IHC-P or IP.

Target

Function Essential regulator of neutrophil polarity. Regulates neutrophil polarization by regulating AKT1 phosphorylation through a mechanism that is independent of PIK3CG activity.

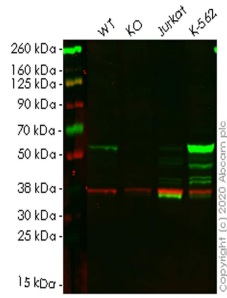
Tissue specificity Ubiquitous.

Sequence similarities Belongs to the MAGUK family.
Contains 1 guanylate kinase-like domain.
Contains 1 PDZ (DHR) domain.
Contains 1 SH3 domain.

Post-translational modifications Extensively palmitoylated.

Cellular localization Membrane. Cell projection > stereocilium. Colocalizes with WHRN at stereocilium tip during hair cell development (By similarity). Colocalizes with MPP5 in the retina, at the outer limiting membrane (OLM). Colocalizes with WHRN in the retina, at the outer limiting membrane (OLM), outer plexiform layer (OPL), basal bodies and at the connecting cilium (CC). Colocalizes with NF2 in non-myelin-forming Schwann cells.

Images



Western blot - Anti-MPP1 antibody [EPR5865] (ab108528)

All lanes : Anti-MPP1 antibody [EPR5865] (ab108528) at 1/1000 dilution

Lane 1 : Wild-type HEK293T cell lysate

Lane 2 : MPP1 knockout HEK293T cell lysate

Lane 3 : Jurkat cell lysate

Lane 4 : K-562 cell lysate

Lysates/proteins at 20 µg per lane.

Secondary

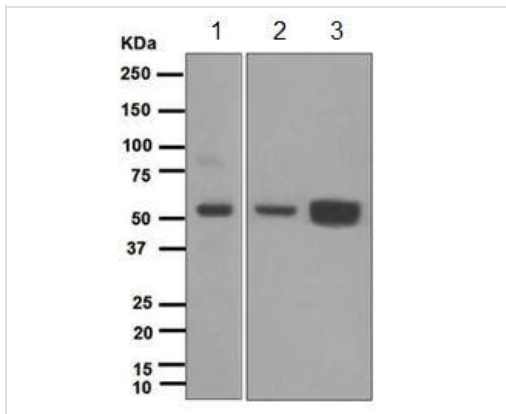
All lanes : Goat anti-Rabbit IgG H&L (IRDye® 800CW) preadsorbed (ab216773) at 1/10000 dilution

Predicted band size: 52 kDa

Observed band size: 52 kDa

Lanes 1-4: Merged signal (red and green). Green - ab108528 observed at 52 kDa. Red - loading control ab8245 observed at 36 kDa.

ab108528 Anti-MPP1 antibody [EPR5865] was shown to specifically react with MPP1 in wild-type HEK293T cells. Loss of signal was observed when knockout cell line ab267248 (knockout cell lysate ab258051) was used. Wild-type and MPP1 knockout samples were subjected to SDS-PAGE. ab108528 and Anti-GAPDH antibody [6C5] - Loading Control (ab8245) were incubated overnight at 4°C at 1 in 1000 dilution and 1 in 20000 dilution respectively. Blots were developed with Goat anti-Rabbit IgG H&L (IRDye® 800CW) preadsorbed (ab216773) and Goat anti-Mouse IgG H&L (IRDye® 680RD) preadsorbed (ab216776) secondary antibodies at 1 in 20000 dilution for 1 hour at room temperature before imaging.



Western blot - Anti-MPP1 antibody [EPR5865] (ab108528)

All lanes : Anti-MPP1 antibody [EPR5865] (ab108528) at 1/1000 dilution

Lane 1 : K562 cell lysate

Lane 2 : 293T cell lysate

Lane 3 : Jurkat cell lysate





Lysates/proteins at 10 µg per lane.

Secondary

All lanes : HRP-labelled goat anti-rabbit at 1/2000 dilution

Predicted band size: 52 kDa

Why choose a recombinant antibody?

 <p>Research with confidence Consistent and reproducible results</p>	 <p>Long-term and scalable supply Recombinant technology</p>
 <p>Success from the first experiment Confirmed specificity</p>	 <p>Ethical standards compliant Animal-free production</p>

Anti-MPP1 antibody [EPR5865] (ab108528)

Please note: All products are "FOR RESEARCH USE ONLY. NOT FOR USE IN DIAGNOSTIC PROCEDURES"

Our Abpromise to you: Quality guaranteed and expert technical support

- Replacement or refund for products not performing as stated on the datasheet
- Valid for 12 months from date of delivery
- Response to your inquiry within 24 hours
- We provide support in Chinese, English, French, German, Japanese and Spanish
- Extensive multi-media technical resources to help you
- We investigate all quality concerns to ensure our products perform to the highest standards

If the product does not perform as described on this datasheet, we will offer a refund or replacement. For full details of the Abpromise, please visit <https://www.abcam.com/abpromise> or contact our technical team.

Terms and conditions

- Guarantee only valid for products bought direct from Abcam or one of our authorized distributors