


Product datasheet

Anti-MRas antibody ab26303

2 Images

Overview

| | |
|----------------------------|--|
| Product name | Anti-MRas antibody |
| Description | Rabbit polyclonal to MRas |
| Host species | Rabbit |
| Tested applications | Suitable for: WB, ICC/IF |
| Species reactivity | Reacts with: Mouse, Human Predicted to work with: Rat  |
| Immunogen | Synthetic peptide: KKKTKWRGDRATGTHKLQ , corresponding to C terminal amino acids 186-204 of Human MRas Run BLAST with Run BLAST with |

General notes

Reproducibility is key to advancing scientific discovery and accelerating scientists' next breakthrough.

Abcam is leading the way with our range of recombinant antibodies, knockout-validated antibodies and knockout cell lines, all of which support improved reproducibility.

We are also planning to innovate the way in which we present recommended applications and species on our product datasheets, so that only applications & species that have been tested in our own labs, our suppliers or by selected trusted collaborators are covered by our Abpromise™ guarantee.

In preparation for this, we have started to update the applications & species that this product is Abpromise guaranteed for.

We are also updating the applications & species that this product has been “predicted to work with,” however this information is not covered by our Abpromise guarantee.

Applications & species from publications and Abreviews that have not been tested in our own labs or in those of our suppliers are not covered by the Abpromise guarantee.

Please check that this product meets your needs before purchasing. If you have any questions, special requirements or concerns, please send us an inquiry and/or contact our Support team ahead of purchase. Recommended alternatives for this product can be found below, as well as customer reviews and Q&As.

Properties

| | |
|-----------------------------|---|
| Form | Liquid |
| Storage instructions | Shipped at 4°C. Upon delivery aliquot and store at -20°C or -80°C. Avoid repeated freeze / thaw cycles. |
| Storage buffer | Constituent: Whole serum |
| Purity | Whole antiserum |
| Clonality | Polyclonal |
| Isotype | IgG |

Applications

Our [Abpromise guarantee](#) covers the use of **ab26303** in the following tested applications.

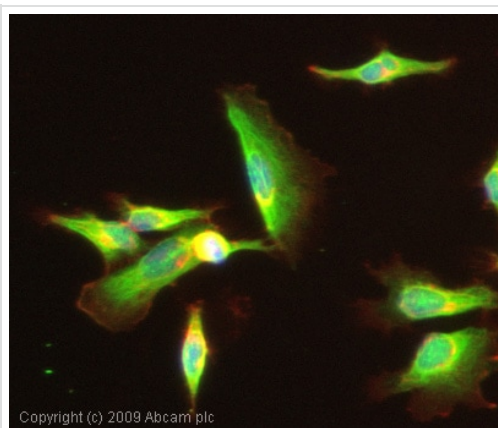
The application notes include recommended starting dilutions; optimal dilutions/concentrations should be determined by the end user.

| Application | Abreviews | Notes |
|-------------|-----------|--|
| WB | | 1/2500. Detects a band of approximately 32 kDa (predicted molecular weight: 24 kDa). Block with 5% milk and dilute in TBST only. |
| ICC/IF | | 1/1000. |

Target

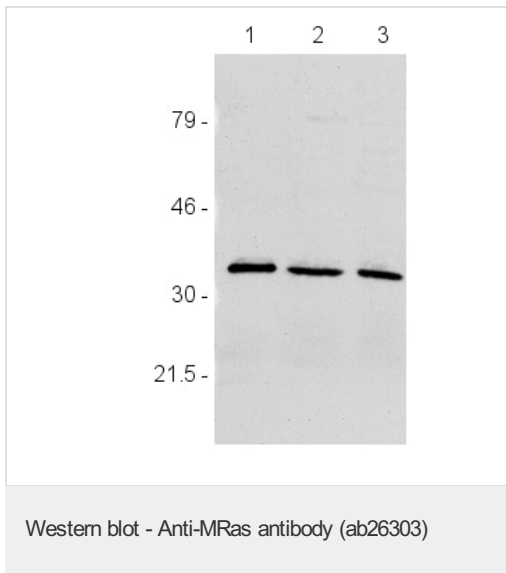
| | |
|------------------------------|--|
| Function | May serve as an important signal transducer for a novel upstream stimuli in controlling cell proliferation. Weakly activates the MAP kinase pathway. |
| Tissue specificity | Expression highly restricted to the brain and heart. |
| Sequence similarities | Belongs to the small GTPase superfamily. Ras family. |
| Cellular localization | Cell membrane. |

Images



ICC/IF image of ab26303 stained MCF7 cells. The cells were 4% PFA fixed (10 min) and then incubated in 1%BSA / 10% normal goat serum / 0.3M glycine in 0.1% PBS-Tween for 1h to permeabilise the cells and block non-specific protein-protein interactions. The cells were then incubated with the antibody (ab26303, 1/1000 dilution) overnight at +4°C. The secondary antibody (green) was Alexa Fluor® 488 goat anti-rabbit IgG (H+L) used at a 1/1000 dilution for 1h. Alexa Fluor® 594 WGA was used to label plasma membranes (red) at a 1/200 dilution for 1h. DAPI was used to stain the cell nuclei (blue) at a concentration of 1.43µM.

Immunocytochemistry/ Immunofluorescence - Anti-MRas antibody (ab26303)



All lanes : Anti-MRas antibody (ab26303)

Lane 1 : HEK 293T cell lysate

Lane 2 : MCF-7 cell lysate

Lane 3 : HeLa cell lysate

Secondary

All lanes : anti-rabbit HRP conjugated

Developed using the ECL technique.

Predicted band size: 24 kDa

Observed band size: 32 kDa

[why is the actual band size different from the predicted?](#)

Observed band larger than predicted size, thought to be due to post-translational modifications.

Please note: All products are "FOR RESEARCH USE ONLY. NOT FOR USE IN DIAGNOSTIC PROCEDURES"

Our Abpromise to you: Quality guaranteed and expert technical support

- Replacement or refund for products not performing as stated on the datasheet
- Valid for 12 months from date of delivery
- Response to your inquiry within 24 hours
- We provide support in Chinese, English, French, German, Japanese and Spanish
- Extensive multi-media technical resources to help you
- We investigate all quality concerns to ensure our products perform to the highest standards

If the product does not perform as described on this datasheet, we will offer a refund or replacement. For full details of the Abpromise, please visit <https://www.abcam.com/abpromise> or contact our technical team.

Terms and conditions

- Guarantee only valid for products bought direct from Abcam or one of our authorized distributors