

Product datasheet

Anti-MRP2 antibody [M2III-5] ab15603

KO VALIDATED

[10 References](#) [1 Image](#)

Overview

Product name	Anti-MRP2 antibody [M2III-5]
Description	Mouse monoclonal [M2III-5] to MRP2
Host species	Mouse
Specificity	This antibody does not cross-react with the human MDR1 P-gp, MRP1, MRP3, or MRP5 gene products.
Tested applications	Suitable for: WB
Species reactivity	Reacts with: Human Does not react with: Mouse
Immunogen	This antibody was raised against a fusion protein of the bacterial maltose binding protein and rat MRP2, containing the 202-amino acid C terminal end of the transporter protein.
Epitope	ab15603 reacts with an internal epitope of MRP2; a 190-200 kD transmembrane protein earlier known as the canalicular multi-organic anion transporter cMOAT, absent in patients with the Dubin-Johnson syndrome.
General notes	<p>The Life Science industry has been in the grips of a reproducibility crisis for a number of years. Abcam is leading the way in addressing this with our range of recombinant monoclonal antibodies and knockout edited cell lines for gold-standard validation. Please check that this product meets your needs before purchasing.</p> <p>If you have any questions, special requirements or concerns, please send us an inquiry and/or contact our Support team ahead of purchase. Recommended alternatives for this product can be found below, along with publications, customer reviews and Q&As</p>

Properties

Form	Liquid
Storage instructions	Shipped at 4°C. Store at +4°C short term (1-2 weeks). Upon delivery aliquot. Store at -20°C or -80°C. Avoid freeze / thaw cycle.
Storage buffer	pH: 7.3 Preservative: 0.1% Sodium azide Constituents: Tissue culture supernatant, 0.7% BSA
Purity	Tissue culture supernatant

Clonality	Monoclonal
Clone number	M2III-5
Isotype	IgG2b

Applications

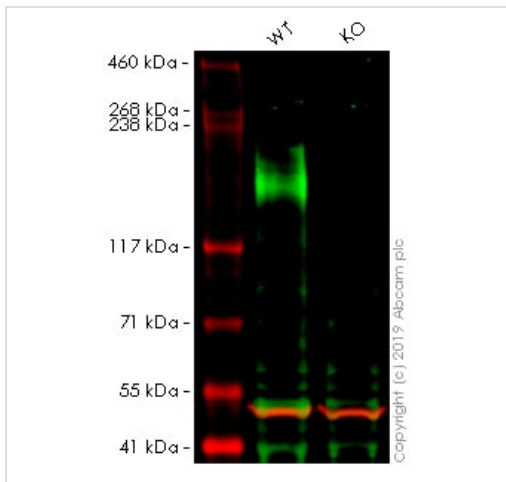
The Abpromise guarantee Our **Abpromise guarantee** covers the use of ab15603 in the following tested applications. The application notes include recommended starting dilutions; optimal dilutions/concentrations should be determined by the end user.

Application	Abreviews	Notes
WB		1/20 - 1/50. Predicted molecular weight: 185.4 kDa.

Target

Function	Mediates hepatobiliary excretion of numerous organic anions. May function as a cellular cisplatin transporter.
Tissue specificity	Found on the apical membrane of polarized cells in liver, kidney and intestine. The highest expression is found in liver.
Involvement in disease	Defects in ABCC2 are the cause of Dubin-Johnson syndrome (DJS) [MIM:237500]. DJS is an autosomal recessive disorder characterized by conjugated hyperbilirubinemia, an increase in the urinary excretion of coproporphyrin isomer I, deposition of melanin-like pigment in hepatocytes, and prolonged retention of sulfobromophthalein, but otherwise normal liver function.
Sequence similarities	Belongs to the ABC transporter superfamily. ABCC family. Conjugate transporter (TC 3.A.1.208) subfamily. Contains 2 ABC transmembrane type-1 domains. Contains 2 ABC transporter domains.
Cellular localization	Membrane.

Images



Western blot - Anti-MRP2 antibody [M2III-5] (ab15603)

All lanes : Anti-MRP2 antibody [M2III-5] (ab15603) at 1/20 dilution

Lane 1 : Wild-type A549 whole cell lysate

Lane 2 : ABCC2 knockout A549 whole cell lysate

Lysates/proteins at 20 µg per lane.

Predicted band size: 185.4 kDa

Lanes 1 - 2: Merged signal (red and green). Green - ab15603 observed at 210 kDa. Red - loading control, **ab52866**, observed at 50 kDa.

ab15603 was shown to recognize ABCC2 in wild-type A549 cells as signal was lost at the expected MW in ABCC2 knockout cells. Additional cross-reactive bands were observed in the wild-type and knockout cells. Wild-type and ABCC2 knockout samples were subjected to SDS-PAGE. The membrane was blocked with 3% Milk. Ab15603 and **ab52866** (Rabbit anti-alpha Tubulin loading control) were incubated overnight at 4°C at 1/20 dilution and 1/20000 dilution respectively. Blots were developed with Goat anti-Mouse IgG H&L (IRDye® 800CW) preabsorbed **ab216772** and Goat anti-Rabbit IgG H&L (IRDye® 680RD) preabsorbed **ab216777** secondary antibodies at 1/20000 dilution for 1 hour at room temperature before imaging.

Please note: All products are "FOR RESEARCH USE ONLY. NOT FOR USE IN DIAGNOSTIC PROCEDURES"

Our Abpromise to you: Quality guaranteed and expert technical support

- Replacement or refund for products not performing as stated on the datasheet
- Valid for 12 months from date of delivery
- Response to your inquiry within 24 hours
- We provide support in Chinese, English, French, German, Japanese and Spanish
- Extensive multi-media technical resources to help you
- We investigate all quality concerns to ensure our products perform to the highest standards

If the product does not perform as described on this datasheet, we will offer a refund or replacement. For full details of the Abpromise, please visit <https://www.abcam.com/abpromise> or contact our technical team.

Terms and conditions

- Guarantee only valid for products bought direct from Abcam or one of our authorized distributors