

Product datasheet

Anti-MRP4 antibody ab32550

KO VALIDATED

[2 References](#) [2 Images](#)

Overview

Product name	Anti-MRP4 antibody
Description	Rabbit polyclonal to MRP4
Host species	Rabbit
Tested applications	Suitable for: WB
Species reactivity	Reacts with: Rat, Human
Immunogen	Synthetic peptide conjugated to KLH derived from within residues 1 - 100 of Human MRP4. Read Abcam's proprietary immunogen policy (Peptide available as ab37589 .)
Positive control	ab32550 gave a positive signal in the following Human Tissue Lysates: Testis, Spleen, Thymus, Kidney and Prostate.

Properties

Form	Liquid
Storage instructions	Shipped at 4°C. Store at +4°C short term (1-2 weeks). Upon delivery aliquot. Store at -20°C or -80°C. Avoid freeze / thaw cycle.
Storage buffer	Preservative: 0.02% Sodium Azide Constituents: 1% BSA, PBS, pH 7.4
Purity	Immunogen affinity purified
Clonality	Polyclonal
Isotype	IgG

Applications

Our [Abpromise guarantee](#) covers the use of **ab32550** in the following tested applications.

The application notes include recommended starting dilutions; optimal dilutions/concentrations should be determined by the end user.

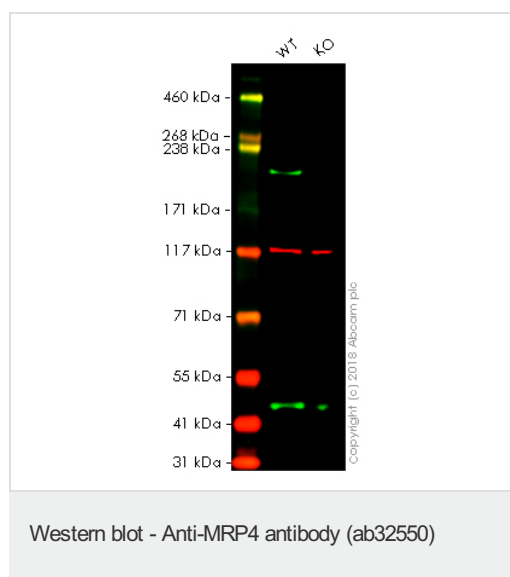
Application	Abreviews	Notes

Application	Abreviews	Notes
WB		Use a concentration of 1 µg/ml. Detects a band of approximately 230 kDa (predicted molecular weight: 150 kDa).

Target

Function	May be an organic anion pump relevant to cellular detoxification.
Tissue specificity	Widely expressed, with particularly high levels in prostate, but is barely detectable in liver.
Sequence similarities	Belongs to the ABC transporter superfamily. ABCC family. Conjugate transporter (TC 3.A.1.208) subfamily. Contains 2 ABC transmembrane type-1 domains. Contains 2 ABC transporter domains.
Cellular localization	Membrane.

Images



All lanes : Anti-MRP4 antibody (ab32550) at 1 µg/ml

Lane 1 : Wild-type HAP1 whole cell lysate

Lane 2 : ABCC4 knockout HAP1 whole cell lysate

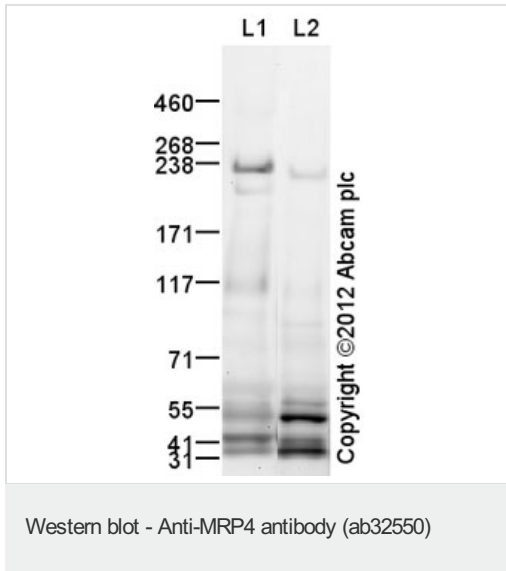
Lysates/proteins at 20 µg per lane.

Predicted band size: 150 kDa

Observed band size: 150 kDa

Lanes 1 -2: Merged signal (red and green). Green - ab32550 observed at 150 kDa. Red - loading control, [ab18058](#), observed at 130 kDa.

ab32550 was shown to specifically react with MRP4 in wild-type HAP1 cells as signal was lost in ABCC4 knockout cells. Wild-type and ABCC4 knockout samples were subjected to SDS-PAGE. Ab32550 and [ab18058](#) (Mouse anti-Vinculin loading control) were incubated overnight at 4°C at 1 µg/ml and 1/20000 dilution respectively. Blots were developed with Goat anti-Rabbit IgG H&L (IRDye® 800CW) preabsorbed [ab216773](#) and Goat anti-Mouse IgG H&L (IRDye® 680RD) preabsorbed [ab216776](#) secondary antibodies at 1/20000 dilution for 1 hour at room temperature before imaging.



All lanes : Anti-MRP4 antibody (ab32550) at 1 µg/ml

Lane 1 : Prostate (Human) Tissue Lysate

Lane 2 : Human kidney tissue lysate - total protein ([ab30203](#))

Lysates/proteins at 10 µg per lane.

Secondary

All lanes : Goat Anti-Rabbit IgG H&L (HRP) preadsorbed ([ab97080](#)) at 1/5000 dilution

Developed using the ECL technique.

Performed under reducing conditions.

Predicted band size: 150 kDa

Observed band size: 230 kDa

[why is the actual band size different from the predicted?](#)

Additional bands at: 32 kDa, 42 kDa, 53 kDa. We are unsure as to the identity of these extra bands.

Exposure time: 20 minutes

MRP4 has a predicted molecular weight of 150 kDa; however it has a number of potential transmembrane regions, glycosylation and phosphorylation sites which may affect the migration of the protein (SwissProt data). Abcam currently sells another antibody ([ab56675](#)) which detects a band of similar molecular weight in Hela lysate.

Please note: All products are "FOR RESEARCH USE ONLY. NOT FOR USE IN DIAGNOSTIC PROCEDURES"

Our Abpromise to you: Quality guaranteed and expert technical support

- Replacement or refund for products not performing as stated on the datasheet
- Valid for 12 months from date of delivery
- Response to your inquiry within 24 hours
- We provide support in Chinese, English, French, German, Japanese and Spanish
- Extensive multi-media technical resources to help you
- We investigate all quality concerns to ensure our products perform to the highest standards

If the product does not perform as described on this datasheet, we will offer a refund or replacement. For full details of the Abpromise,

please visit <https://www.abcam.com/abpromise> or contact our technical team.

Terms and conditions

- Guarantee only valid for products bought direct from Abcam or one of our authorized distributors